



Newsletter

9th September 2022

Dear Parents and Carers,

Welcome back to the start of a new academic year here at East Tilbury Primary. It has been a great week back at school, welcoming new children, parents and staff to the school community and also seeing our pupils from last year moving up to their new classes. The children have settled quickly, with calm and purposeful learning happening across the school. Early next week you will receive a 'Parent Termly Information Letter' that outlines the overview of your child's learning for this term. This document will also highlight resources that you might like to use at home to further enhance your child's learning. You will be able to find further information about the Curriculum on our website which gives details on the learning overviews for each subject and year group.

Thank you for your patience and support with our drop off and collection system. On the whole, this has worked well this week. We are grateful for the comments parents have made to SLT on the gates to help refine areas of the process and clarify procedures for getting your children into and out of school as smoothly as possible. To further help with this process, if you drop a child off in Reception, yr1 and yr 2 please exit via the main blue gates at the furthest left part of the school site (as viewed from the memorial park) rather than cutting through the car park by Little Angels. This will help with congestion at other entry/ exit points. Thank you for your support in this process.

Following the news of her majesty Queen Elizabeth's II death yesterday afternoon, we offer our condolences to the Royal Family and recognise the dedication of 70 years of services she offered the country. Please be assured that we will keep you updated on any guidance giving to schools by the Department for Education in terms of marking this time of loss in the country.

The Leadership Team



The Osborne Co-operative Academy Trust offers our deepest condolences to the Royal Family as we recognise the passing of the longest serving monarch in British history, Her Majesty Queen Elizabeth II. We pay tribute to the Queen, who gave such long service and duty to our country and the commonwealth. After seven decades, the passing of the second Elizabethan era is a challenge for us all. She was an example of how we should all live our lives and was respected throughout the world.

We now join you all in welcoming the beginning of the reign of King Charles III

Paul Griffiths, CEO



Absence

If your child is too ill to attend school, this must be reported to us by no later than **9.00am**. Please Telephone the school, press one and leave a message on the voicemail box stating your child's full name, class, the reason for absence and when we can expect them to return to school (if known).

Home Visits will be carried out for any child that is absent for 3 or more school days without reason.

We would like to wish Enzo, Ted, Kyle and Harrison luck at the Thurrock District Football Trials this Saturday. We are confident that they will be excellent ambassadors for our school.





Bata

Heritage Centre Open Day



Bata Shoe Factory
Princess Margaret Rd
East Tilbury
RM18 8RH

East Tilbury Library
Princess Ave
East Tilbury
RM18 8ST
Tel- 01375 652688

SATURDAY
15th October
2022
TWO CENTRE
FACTORY
10am to 1pm
LIBRARY
10am to 4pm

**Guided Tours of
Factory & Estate**
From Factory at
11am 12pm & 1pm
£5 per Head
**Bata Heritage
Talk**
Library at **2:30pm**

<https://www.bataheritagecentre.org.uk>

Important dates:

| | |
|---|-------------------------------------|
| 28th September —30th September 2022 | Year 6 residential—Stubbers |
| Friday 14th October 2022 | Non-Uniform Day |
| Monday 17th October 2022– Friday 28th October 2022 | October Half Term |
| Monday 31st October 2022 | Pupils return to school |
| Tuesday 1st November 2022 | Individual photographs |
| Wednesday 16th November 2022 | Flu Immunisations |
| Thursday 8th December 2022 | Pantomime |
| Friday 16th December 2022 | Non-Uniform Day |
| Monday 19th December 2022— Tuesday 3rd January 2023 | Christmas Holidays |
| Tuesday 3rd January 2023 | INSET day—school closed to pupils |
| Wednesday 4th January 2023 | Pupils return to school |
| Friday 10th February 2023 | Non-Uniform Day |
| Monday 13th February 2023—Friday 17th February 2023 | February Half Term |
| Thursday 30th March 2023 | Non-Uniform Day |
| Friday 31st March 2023 | Trust Conference Day— Non-Pupil Day |
| Monday 3rd April 2023— Friday 14th April 2023 | Easter Holidays |
| Monday 17th April 2023 | Pupils return to school |
| Monday 1st May 2023 | May day—School Closed |
| Friday 26th may 2023 | Non-Uniform Day |
| Monday 29th May 2023 —Friday 2nd June 2023 | May Half Term |
| Monday 5th June 2023 | Pupils return to school |
| Thursday 20th and Friday 21st July 2023 | INSET days—school closed to pupils |
| Monday 24th July 2023 | First day of summer holidays |

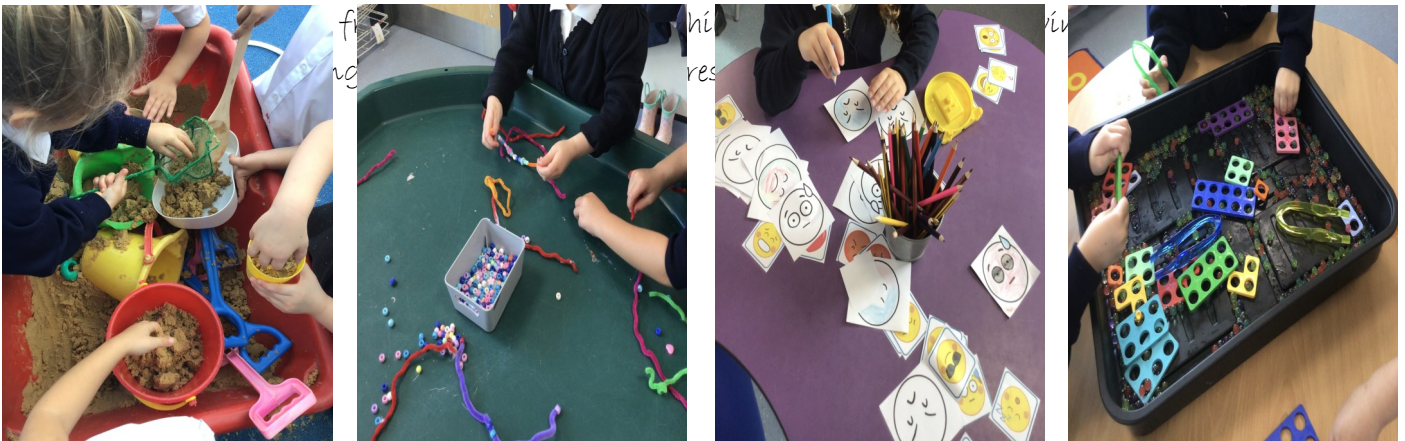


Classroom catch up

Reception

We have successfully completed our first week in Reception! It is always special welcoming our new children to East Tilbury Primary. All the children were looking very smart in their uniforms, too! Despite the inevitable first day nerves, everyone seemed really excited about their first day at 'big school', exploring new activities, seeing their friends, and making new ones.

This week, we have focussed on getting to know each other and talking about our families. Thank you to all parents/carers for your efforts with the children's 'All About Me books'! The teachers have enjoyed looking through these and finding out even more about the children. The children have been



Next week, we will be having our first PE sessions. This half term, the children will be focussing on dance, and PE will take place indoors. PE for each class will be on the following days:

RES & RFC - Mondays

RJG & RMB - Wednesdays

Please ensure your child has a PE kit in school on the appropriate days. Also, it would be helpful if parents/carers could remove any jewellery from the children before coming to school on PE days. If

Year 1

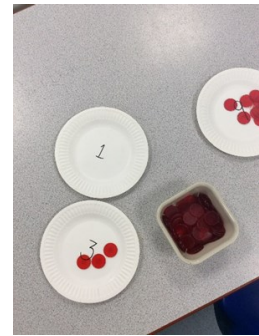
Year 1 have settled into their new classes very well and have thoroughly enjoyed getting to know their new teachers and surroundings. They have shown resilience and determination during task time where they have been completing work as a whole class. In addition to this, they have been working on their growth mindset where they have been thriving on challenge and haven't seen failure to describe themselves, but as a springboard for growth and developing their abilities. They have been using the special word 'yet' to



show
may



that they
not be able



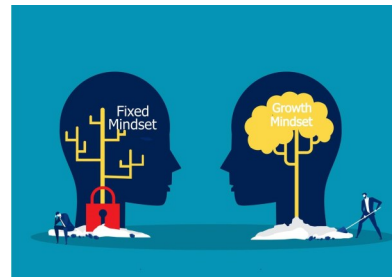
Year 2

Year 2 have made a brilliant start to the year. The children have settled in well.

LEARNING COUNCIL

We spoke about our British values, focusing on democracy.

We worked as a class to vote for our class learning councillor



We had a focus on our growth mind set.

We completed a range of different activities and discussed the importance of having a positive attitude to learning and how to overcome the challenges they may face.



In science, we have introduced the unit of living things and their habitats. They discussed and identified things that are living and non-living.

Year 3



The year 3 teaching team are so proud of how well all children have settled back into their school routines this week. Our focus this week has been on good listening and following instructions well, and we have been absolutely amazed with the behaviour from our pupils. They have displayed great manners and respect for both staff and their peers. At the beginning of the week we focused on reminding the children to approach their learning with a Growth Mind-set, fortunately most children in 3NM are willing to rise to challenges and understood that making mistakes equals learning.

In English this week, we were inspired by the book 'How to Wash a Woolly Mammoth' by Michelle Robinson.

After reading and discussing the different challenges such task could come with, we wrote our own instructions to do so. In maths, our focus has been on presentation of our books, as well as a recap of the place value skills that we have already learnt.



Year 4

Welcome to year 4! We are really looking forward to starting this academic year and encouraging the pupils to maintain the year 4 expectations. This week in year 4 we have focused on our growth mindset, looking at building on our resilience and managing emotions to help us navigate the new school year. We have also began our term topic, the Anglo Saxons and started to learn about King Alfred the Great. Pupils were introduced to the nature of the time period and the good nature of King Alfred. The year 4 team would like to congratulate all pupils on how well they have settled this week and adapted to the new expectations.

Year 5



The Year 5 pupils have embraced the start of term enthusiastically. Many of the pupils have relished the moment of ascending to Upper Key Stage 2 and have recognised the raised expectations, responsibilities and opportunities of emerging into one of the older year groups of the school.

Alongside an introduction to Year 5 Reading, Writing and Maths, pupils have enjoyed delving into Shared Read class texts (5JP are reading *The Demon Headmaster* (Gillian Cross; 1982). Additionally, pupils have watched, evaluated and discussed a collection of short videos exploring how to apply a Growth Mindset when facing challenges. 5AB even composed some acrostic poems to add to their class display.

Pupils have had the chance to consider and ask questions about their upcoming term's learning in History and Science by adding questions on post-it notes to the class displays. They have revisited their French skills and PE basketball skills.

Furthermore, pupils loved the chance on Tuesday afternoon





NEWS ALERTS



Year 6 News

Welcome Back and New Beginnings!

Our journey at East Tilbury has hit its final year—our last year has just started!

Year 6 have settled back into school life extremely well this week and the Year 6 teaching team are very impressed with their positive attitude to learning. All of the children should be proud of how they have returned to school and represented the school values. The children have been enjoying beginning their class reading books this week and listening to the adults read to them each morning. Another favourite activity was a Pirate game we played in the first 2 days, in which the children

used their knowledge of coordinates and addition to battle against one another and win the most points.

The Pirate Game

| | C | D | E | F |
|---|---|---|---|---|
| 1 | | | | |
| 2 | | | | |
| 3 | | | | |
| 4 | | | | |
| 5 | | | | |
| 6 | | | | |

Put one of each of these on your grid...

- Rob someone's points
- Kill Someone
- Present - give someone 20 points
- Swap scores
- Choose next square
- Bomb - YOU go to zero
- Double Your Score
- Bank Your Score

CASH

Now put these in...

| | |
|----|------|
| 25 | x 1 |
| 10 | x 2 |
| 2 | x 10 |
| 1 | x 25 |

BANK



REACH!! FOR THE STARS

Our 'Stars of the Week' are the children that have gone over and above in their efforts. We are very proud of them for their achievements and thought they deserved an extra-special mention!

| | | |
|-----|-------------|---|
| RJG | All of RJG | For settling well into reception |
| RMB | All of RMB | For settling well into reception |
| RFC | All of RFC | For settling well into reception |
| RES | All of RES | For settling well into reception |
| 1CH | All of 1CH | For showing resilience and determination and settling well into year 1. |
| 1GC | All of 1GC | For showing resilience and determination and settling well into year 1. |
| 1FK | All of 1FK | For showing resilience and determination and settling well into year 1. |
| 1BA | All of 1BA | For showing resilience and determination and settling well into year 1. |
| 2MR | Isabelle B | For showing a growth mindset to improve and challenge herself in maths. |
| 2RS | Jannie D | For his great counting in maths this week. |
| 2NL | Sullivan O | For trying his and persevering when he found his work challenging. |
| 2RM | Victoria J | For brilliant effort with her reading this week. |
| 3EC | Stevie C | For settling well into Year 3 |
| 3LD | All of 3LD | For a wonderful, calm and kind start to the year |
| 3NM | All of 3 NM | For an amazing start to Year 3 |
| 4TH | All of 4TH | For settling well and adapting to the year 4 expectations. |
| 4BG | All of 4BG | For settling well and adapting to the year 4 expectations. |
| 4SA | All of 4SA | For settling well and adapting to the year 4 expectations |
| 5AB | All of 5AB | For having an amazing start to the school year |
| 5JP | Lexi T | For being incredibly helpful around our classroom this week. |
| 5NB | Josie K | For settling in extremely well, demonstrating herself as a role-model. |
| 6CP | All of 6CP | For a brilliant start to their final year at East Tilbury Primary School. |
| 6LC | All of 6LC | For a brilliant start to their final year at East Tilbury Primary School. |
| 6VP | All of 6VP | For a brilliant start to their final year at East Tilbury Primary School. |
| 6JM | All of 6JM | For a brilliant start to their final year at East Tilbury Primary School. |



A huge welcome back to all the children and parents.

I would like to announce a change to the SEND Team.

Mrs Cowlshaw will now join the team as Assistant SENCo, focussing on the needs of children in Early Years with her extensive experience of teaching in this area.

The SEND Team now have a new email address. If you have any questions or queries relating to your child's needs, please email: send.etp@osborne.coop. We will endeavour to get back to you within 48 hours of contact. If the message is urgent, please contact the school office.

SEND review meetings will continue this year. Dates for next half term will be published shortly and you will be able to sign up for a convenient slot.

This year, we are pleased to announce the return of our SEND coffee mornings. These will provide an opportunity to meet with the SENCo, Assistant SENCo and visiting agencies. We would like to provide a support focus for each of these sessions and would gratefully receive any suggestions that you feel might benefit in supporting your child further. Feel free to send suggestions to the email address above. The first coffee morning will be held Thursday 13th October from 9am - 10.30am with a focus on social and emotional needs. We really hope you can attend.

We look forward to working with you all again this year.

Mrs Mylam



Your aspirations, our priority



FOCUS GROUP 7 SEND and Early Support

Let's share

The Thurrock Early Support and Portage Service Thurrock Portage is an education service accredited by the National Portage Association to support pre-school children aged 0-5 years with a range of special educational needs and disabilities. There are four parts to the service:

- Portage home visiting with three key elements: family focus to hear about and address family priorities, child-led play to identify and develop children's strengths and interests, and structured teaching to support children's development using a small steps approach to learning.
- Portage outreach support to pre-school and nursery settings to help them to develop their practice and meet children's additional needs.
- Early Support meetings to coordinate support from education, health, and case services, with a focus upon family's hopes and aspirations for their child and the outcomes they wish to achieve.
- Portage Playgroup for children with additional needs aged 0-5 years

We would welcome your insight into the Early Support and Portage Service in Thurrock as we continue to develop our offer.

Let's discuss

The purpose of this focus group is to:

- Provide an opportunity for you to share experiences of early years education services in the, for example Portage home visiting, early support, and support in a nursery or pre-school setting
- Answer any questions you may have

Let's talk

Date: Wednesday 28th September 2022

Time: 10-11am

Place: Microsoft Teams

To book your place, contact us:

QASEND@thurrock.gov.uk



ALL TO PLAY FOR THIS SUMMER

Could you...

- ❖ Have time outdoors?
- ❖ Explore new places?
- ❖ Invite friends and / or family members to join in your favourite activity or visit a location that means something to you?
- ❖ Learn something new?

Playday, a National campaign occurs every year in August and is a campaign held to celebrate the importance of Play in children's lives.

- ❖ Play refers to a wide range of activities and behaviours that you get enjoyment from.

- ❖ Play may or may not involve equipment or have an end goal.

- ❖ Play can be energetic or quiet and contemplative, light-hearted or very serious.

Where and how you decide to celebrate Playday is up to you – what's really important is that you are having fun whilst helping to raise awareness that not all children have the chance to experience what it's like to play

Calling all 2-11 year olds with SEND!!

We would like to find out what play means to you!

Why is play important to you?

How could you encourage others to try your favourite activity?

Send your entries in the form

of a story, drawing, photograph or craft
to: QASEND@thurrock.gov.uk

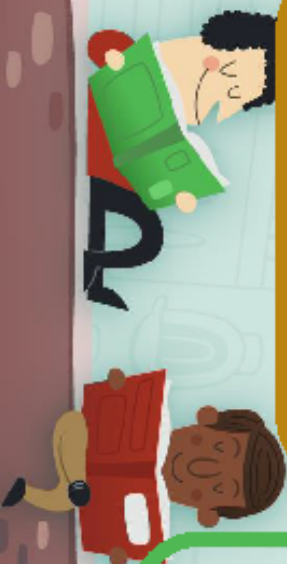
Please include your:

name
age
School

Shortlisted entries will receive a certificate of recognition and an overall winner will be sent a prize

Open: 1st August 2022

Closes: 30th September 2022



SPOT THE ONLINE SAFETY TIPS FOR GOING

BACK TO SCHOOL



What Parents & Carers Need to Know about

ROBLOX



Roblox is one of the most popular video games on the market. By 2020, the game's makers were claiming that more than half of children in the USA play it. As a 'sandbox' title, Roblox offers a huge amount of creative freedom; it lets players create their own gaming experiences with the Roblox Studio to build custom levels and games, which can then be shared with other players online. Roblox fosters creative thinking and enjoys a robust online community of fans.

WHAT ARE THE RISKS?

CONTACT WITH STRANGERS

Roblox encourages players to communicate online (including a group chat facility). This could expose children to risks such as scammers, online predators, harassment, griefers and more. The in-game chat has some filters, but isn't perfect: players can still send harmful messages to others – such as scam links or general hostility – while predators can reach out to children directly.

ONLINE DATERS

These are also called 'ODers' and are quite common in Roblox. An ODer is an individual who joins a game with the intention of finding someone to date online – and eventually meet in person. Such online dating is against the Roblox community guidelines, but this usually doesn't deter ODers. Some player-built Roblox game worlds have even been designed with online dating specifically in mind.

PUBLIC SERVERS

Roblox has private or VIP servers which allow people to play exclusively with their friends, but this costs money. Most Roblox players will instead be on public servers that anyone can join. Servers can host games which focus on all kinds of aspects, including direct player interaction. Some games and servers, therefore, will put children more at risk of contact from strangers than others.

IN-APP PURCHASES

Roblox is actually free to download and play, but bear in mind that there are some hidden costs. Players are encouraged to make purchases in the game, for example, using real money. People can also buy extra Robux (the in-game currency) to spend on cosmetic items in the game, while it's possible to purchase a private or VIP server.

Advice for Parents & Carers

SET PARENTAL CONTROLS

Roblox comes with several parental control options, which are explained well on the game's official website. It's essential to enter the correct date of birth for your child, as that allows Roblox to automatically apply the appropriate chat filters. The game also allows parents and carers to set monthly spending restrictions and monitor their child's account.

DISABLE PRIVATE MESSAGING

Roblox's private messaging function raises the risk of children being contacted by people they may not want to speak with – potentially leading to bullying, harassment, toxicity and scam attempts. The game allows you to disable messages from anyone who hasn't been added as a friend on your child's account.

PRIVATE SERVERS

If your child has some genuine friends to play Roblox online with, paying for a private or VIP server decreases the risk of contact from strangers. Even then, however, some players could invite other people – who might not necessarily be child friendly – into the private server. If your child is a Roblox fan, it's important to talk with them regularly about who they are playing the game with.

MONITOR SPENDING

If they don't understand they're using real money, it's easy for children to accidentally spend a sizeable amount in the game. Using parental controls to place limits on their spending will help avoid any nasty financial surprises. Ensuring that you have two-factor authentication on your payment accounts also makes it harder for your child to spend money inadvertently.

DEALING WITH STRANGERS

At some point in their development, your child will need to learn how to deal with strangers online. Show them how to block and report any users who are upsetting them or asking uncomfortable questions. Talking to them about what's OK to discuss – and what they should never tell a stranger online – will help them understand how to communicate with other people online safely.

Meet Our Expert

Clare Godwin (a.k.a. Lunawolf) has worked as an editor and journalist in the gaming industry since 2015, providing websites with event coverage, reviews and gaming guides. She is the owner of Lunawolf Gaming and is currently working on various gaming-related projects including game development and writing non-fiction books.



#WakeUpWednesday

Sources: <https://www.theverge.com/2020/7/21/21333431/roblox-over-half-of-us-kids-are-playing-virtual-parties-for-nite>
<https://corporate.roblox.com/parents/>



www.nationalonlinesafety.com



@natonlinesafety



/NationalOnlineSafety



@nationalonlinesafety

Users of this guide do so at their own discretion. No liability is entered into. Current as of the date of release: 07.09.2022

COMMIT TO BE FIT!

PE will be on the following days for each year group. Please ensure pupils have full PE kit in school for these days. If your child does not have a PE kit, please speak to Mrs Allen in our uniform shop who may be able to help you.

Monday—6LC, 6CP, 1CH, 1FK, RFC, RES, 2NL, 2MR

Tuesday—4TH, 4BQ, 1BA, 3EC, 4SA, 1QC, 3NM

Wednesday—2NL, 2RS, 1QC, 1BA, 2MR, 2RM, 6VP, 6JM, RJG, RMB

Thursday—2RS, 2RM, 3NM, 5NB, 3LD, 3EC, 5AB, 5JP

Friday—3LD, 5NB, 5JP, 5AB, 6LC, 6JM, 1FK, 1CH, 6CP, 6VP, 4BQ, 4SA



Surgery Schedule 2022

where and when to find us

Surgeries run term time only

To book an appointment: www.patt.org.uk/surgeries
scan the QR code or call 07702 127 252



First Wednesday of Every Month 10am - 1pm

Ockendon Children's Centre, 2a Afton Drive, RM15 5AP

4th May, 6th July, 7th Sept 5th Oct, 2nd Nov, 7th Dec



First Thursday of Every Month - 9.30am - 12.30pm

Tilbury Children's Centre, London Road, Tilbury RM18 8EY

5th May, 9th June, 7th July, 8th Sept, 6th Oct, 3rd Nov, 1st Dec



Second Tuesday of Every Month 10am - 1pm

PATT Offices, c/o Take 4 Care, 51 Lodge Lane, Grays RM17 5RZ

10th May, 14th June, 12th July, 13th Sept, 11th Oct, 8th Nov, 13th Dec.



Second Wednesday of Every Month 6pm - 8.30pm

Stanford-Le-Hope Children's Centre, Copland Road, SS17 0DF

Including PATT ADHD Support group

15th June, 13th July, 14th Sept, 12th Oct 9th Nov, 14th Dec.



Fourth Tuesday of Every Month 2pm - 7pm

PATT Offices, c/o Take 4 Care, 51 Lodge Lane, Grays RM17 5RZ

24th May, 28th June, 27th Sept, 25th Oct, 22th Nov



Fourth Wednesday of Every Month 10am - 1pm

Purfleet Children's Centre, Centurion Way, RM19 1QA

25th May, 29th June, 28th Sept, 23rd Nov



ADHD Support Group

For families with children and young people with
ADHD and neurodiversity

For information on guest speakers, and to let us know you are coming,
www.patt.org.uk/adhdsupport or scan the QR Code below

SECOND Wednesday of each month 6.30–8.30pm

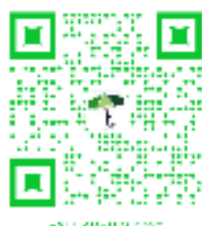
Stanford-Le-Hope Children's Centre, Copland Road, SS17 0DF

15th June, 13th July,

14th September, 12th October, 9th November, 14th December

THIRD Monday of each month 10am–12pm

| | |
|----------------|--|
| 16th May | Chadwell Children's Centre, Claudian Way RM16 4QE |
| 20th June | Ockendon Children's Centre, Afton Drive RM15 5PA |
| 18th July | Tilbury Children's Centre, London Road RM18 8EY |
| 19th September | Purfleet Children's Centre, Centurion Way RM19 1QA |
| 17th October | Thameside Children's Centre, Manor Road RM17 6EF |
| 21st November | Chadwell Children's Centre, Claudian Way, RM16 4QE |
| 19th December | Ockendon Children's Centre, Afton Drive RM15 5PA |



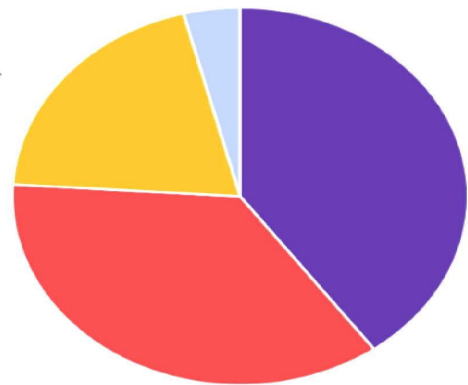
www.patt.org.uk



ETPS PFA Update



Splitting the £1.00



- **40p** goes to our school
- **36p** goes to cash prizes
- **20p** goes to admin costs
- **4p** goes to VAT

How it works...

It's simple—choose 6 numbers between 0-9 and if they match the weekly lottery draw, you win great prizes. One of our players will win a cash prize every week, maybe even the £25k jackpot! Tickets cost just £1 per week and the proceeds are donated to East Tilbury Primary School

Every Saturday at 8pm the numbers are drawn and posted online. Winners are notified by email and winnings paid into the account of your choice.

The easiest way to join our lottery is online at YourSchoolLottery.co.uk by direct debit or debit card.

It's so easy to join and will make a real difference to East Tilbury Primary School

The Maths... 100 tickets sold a week means
= £30 weekly cash prize
= £2,080 a year for our school



To start supporting, visit:
yourschoollottery.co.uk
and search for: **East Tilbury Primary**

Supporters must be 16 years of age or older



ETPS PFA Update

East Tilbury Uniform shop



New
Opening times

Every

Tuesday 8.40am-9.00am

Friday 2.50pm-3.20pm

weather permitting





Do you receive any of the following?

- Income support
- Employment Support Allowance (Income Related)
- Income based Job Seekers Allowance
- Guaranteed Pension Credit
- Child Tax Credit and your income (as calculated by the Inland Revenue) is less than £16,190
- Universal Credit
- Receiving support under Part VI of the Immigration and Asylum Act of 1999
- In the Armed Forces

If you can answer yes to any of the above you may qualify for free school meals/Pupil Premium

The school office will help with your application. If your application is successful not only will your child receive free school meals, but our school will receive £1,300 additional funding (per child). This is called Pupil Premium.

All applications are confidential.



Thurrock Council secondary school admissions

If your child has just started the last year of primary education, you must now apply for a secondary school place.

Important information – applying for a secondary school place for September 2023

If your child was born between **1 September 2011** and **31 August 2012**, you must apply for a secondary school place for **September 2023**.

Apply online from 1 September at thurrock.gov.uk/admissions

Go to thurrock.gov.uk/admissions and select 'Secondary school admissions'. You will be able to open an online copy of our prospectus for Thurrock primary schools, booklet called **Secondary Admission Information September 2023**, which you should read carefully before applying.

You must have an email account to apply online.

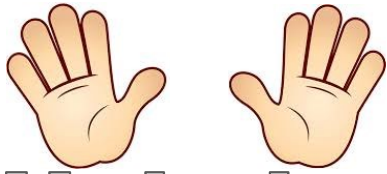
You should also try to join us online at one of the briefing sessions before you complete an application.

Three briefing sessions for parents will be held on Thursday 15 September 2022 via webinar on the council website.

First Session: 1pm - 2pm; Second session: 4pm - 5pm; Third session: 6:30pm - 7:30pm

Go to thurrock.gov.uk/admissions and select 'Secondary school admissions' to access the webinar.

Offers will be available for applicants via your online account from **12:30am on 1 March 2023**.



Help is at hand

Keep in touch!

We are missing being in contact but do not forget we are still here to help where we can.



Our school office is open to receive calls between 8:30am and 3pm.

Tel: 01375 846181

Email: office.etp@osborne.coop



East Tilbury Primary School
Princess Margaret Road
East Tilbury, Essex, RM18 8SB



We are also regularly updating our Facebook page and Twitter feed.

Log on and have a look!



Twitter: @EastTPrimary

At East Tilbury Primary School our Designated Safeguarding Leads (DSL) are:

◇ Mrs Bates

Due to the size of the school, we have the following designated staff who can deputise in the Head of School's absence:

◇ Mr Gowland

◇ Dr. Emmanuel

◇ Mr Bennett

◇ Mrs Jarvis

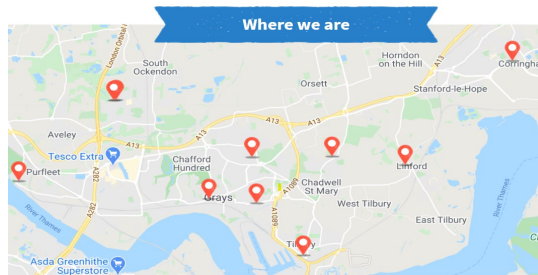
◇ Mrs Mylam

◇ Mrs Allen

Pupils can contact any of our Safeguarding Team during the school day.

Worried about a child? You can phone or write to MASH about your concerns. Phone **immediately** if you believe it is urgent.

[Thurrock MASH \(Multi Agency Safeguarding hub\), Civic Offices, New Road, Grays, Essex, RM17 6SL, Tel: 01375 652802. Emergency Duty Team \(for out of hours\) 01375 372468. · Police Child Abuse Investigation Team 01277 266822 or call 999 if you are concerned a child needs immediate protection. · Childline 0800 11 11 \[www.childline.org.uk\]\(http://www.childline.org.uk\) · NSPCC 0808 800 5000 \[www.nspcc.org.uk\]\(http://www.nspcc.org.uk\); \[www.facebook.com/nspcc\]\(http://www.facebook.com/nspcc\)](#)



LOCATIONS

Here are the opening times and locations for our foodbank centres. Everyone who comes to the foodbank for emergency food needs to have a valid foodbank voucher.

Tues 14:00-16:00: St. Mary's Church hall, St. Mary's Church, Dock Rd, Grays, RM17 6EX.

Weds 09:30-12:00: Thurrock Christian Fellowship, 2-4 Chase Rd, Corringham, S17 7QH

Weds 13:30-15:00: Sockets Heath Baptist Church, Premier Avenue, Grays, RM16 2SB

Thurs 11:00-13:00: St. Francis Centre, Somerset Rd, Linford, SS17 0QA

Thurs 11:00-13:00: All Saints Church of England, Foyle Drive, Sth Ockendon, RM15 5HF

Fri 10:12:00: St. Stephen's Church of England, London Rd, Purfleet, RM19 1QD

Sat 09:30-11:30: Emmanuel Church of England, Sleepers Farm Rd, Chadwell St. Mary, RM16 4TP

Sat 10:00-12:00: All Saints Church of England, Foyle Drive, Sth Ockendon, RM15 5HF

Sat 10:00-12:00: Christian Gates of Praise International Christian Centre, 79-83 London Rd, Grays, RM 17 5YF