

# School News

## A MESSAGE FROM THE SENIOR LEADERSHIP TEAM

Dear Parents and Carers,

It has been another busy week at school, packed full of exciting learning opportunities for the children.

### Christmas schedule

Christmas is fast approaching and as such we wanted to give you notice on the scheduled events at school. Please see the image below in a larger format on the pages to come in this newsletter. This will also be available on our Facebook page. For Christmas cards this year, children can bring them into their classes from the 5<sup>th</sup> Dec to the 13<sup>th</sup> Dec. When writing Christmas cards please put the first name, surname initial and class the child is in on the envelope to ensure smooth delivery.



### Christmas events at ETP



- ❖ 29/11 – PFA Christmas Fayre after school - plenty of Christmas family fun! – see PFA letter for details
- ❖ 4/12 - Christmas pantomime - performance to the children during schooltime
- ❖ 10/12 - Lower school (Reception &KS1) Christmas performances 9.30am and 1.30pm
- ❖ 11/12 – PFA Christmas craft with KS2 in school
- ❖ 11/12 – Lower school (Reception &KS1) Christmas performances 9.30am and 1.30pm
- ❖ 12/12 – PFA Christmas craft with KS1 in school
- ❖ 12/12 – National Christmas jumper day - children can wear a Christmas jumper to school (normal uniform with a Christmas jumper) - voluntary contribution of £1 towards 'Save the children' charity.
- ❖ 16/12 – Christmas assembly hosted by Rev. Michelle in school
- ❖ 18/12 – Christmas dinner day for the children in school
- ❖ 20/12 – last day of term – children can wear non-uniform (Christmas themed if they like!)

Tonight, we will be hosting the PFA Christmas Fete, this will be an exciting Christmas event with stalls, games and even Santas grotto. For more information on this please see correspondence and Facebook posts from the PFA.

### Parent/teacher Consultations

Last week we welcomed the parent community into school to meet with teachers to discuss their child's learning at East Tilbury. It was a very productive set of evenings as parents and teachers worked together to support the children's progress. Thank you also to those who purchased books from the book fair stalls. The school will shortly be receiving credits towards purchasing more books for the children because of your collective generosity.

We wish you a relaxing weekend ahead

School Leadership Team

# Upcoming Events

## Christmas events at ETP



- ❖ 29/11 – PFA Christmas Fayre after school - plenty of Christmas family fun! – see PFA letter for details
- ❖ 4/12 - Christmas pantomime - performance to the children during schooltime
- ❖ 10/12 - Lower school (Reception &KS1) Christmas performances 9.30am and 1.30pm
- ❖ 11/12 – PFA Christmas craft with KS2 in school
- ❖ 11/12 – Lower school (Reception &KS1) Christmas performances 9.30am and 1.30pm
- ❖ 12/12 – PFA Christmas craft with KS1 in school
- ❖ 12/12 – National Christmas jumper day - children can wear a Christmas jumper to school (normal uniform with a Christmas jumper) - voluntary contribution of £1 towards 'Save the children' charity.
- ❖ 16/12 – Christmas assembly hosted by Rev. Michelle in school
- ❖ 18/12 – Christmas dinner day for the children in school
- ❖ 20/12 – last day of term – children can wear non-uniform (Christmas themed if they like!)

# *Important Information*

If your child has an injury and has been given medical advice that we need to follow as a school, please bring them to the school office for 8.15am on their first day back at school following the injury so that we can complete a risk assessment. Thank you for your cooperation.

## **Absence**

If your child is too ill to attend school, this must be reported to us by no later than **9.00am**. Please telephone the school, press one and leave a message on the voicemail box stating your child's full name, class, the reason for absence and when we can expect them to return to school (if known).

Home Visits will be carried out for any child that is absent for 3 or more school days without reason.

# We need you...



Please label all children's school uniform. This helps us return lost property to the correct child and prevents parents from having to replace missing uniform as often. This is particularly important as the weather is getting colder and children are beginning to wear jumpers/cardigans to school.

We are missing a significant number of reading books. If you have any left at home (whatever condition) from last academic year, please return them.  
Thank you

Please be reminded that pupils should not be wearing jewellery to school. Children with pierced ears may wear stud earrings but hoops are not permitted.  
Thank you for your support

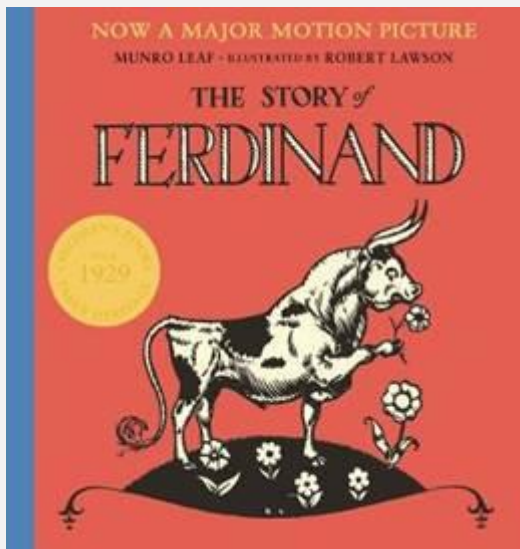
We are continually updating our OPAL resources and would gladly accept donations of:

- Tennis balls
- Footballs
- Bats
- Dressing up clothes
- Colouring books
- Crayons
- Big cars
- Lego



# Recommended Reads

Each week we will be recommending great books that you can share with your children.

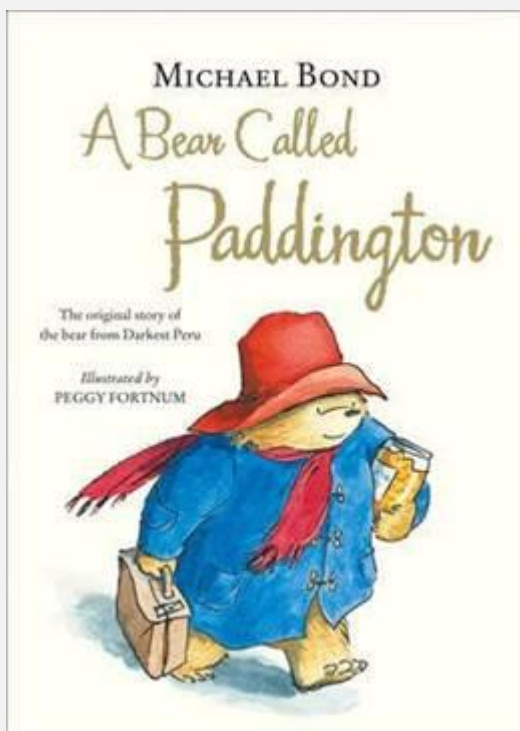


## The Story of Ferdinand

**Author:** Munro Leaf

**Illustrator:** Robert Lawson

Once upon a time in Spain, there lived a little bull named Ferdinand. He didn't like to run around and butt heads with the other little bulls – instead he liked to sit in the shade of his favourite tree and smell the flowers. Later, when he grows up big and strong, Ferdinand still doesn't care about fighting and butting heads with the other bulls; but his great size and strength catch the eye of the men who want to send him to Madrid to fight the Matador.



## A Bear Called Paddington

**Author:** Michael Bond

**Illustrator:** Peggy Fortnum

Paddington, the brown bear from darkest Peru, is found by the Brown family on Paddington Station with his hat, duffel coat and marmalade sandwiches.

Paddington is a decidedly loveable eccentric and his various sticky scrapes will strike chords of recognition with any child. Whilst his intentions are always honourable, his over-literal interpretation of situations means that 'things' inevitably happen, whether at birthday parties or on visits to the theatre or seaside.



# SEND in Focus

## Makaton Signs of the week:

Why not speak with your child and see what signs they can remember from what they've already been taught?



happy



Sad



# SEND in Focus

## SEND COFFEE EVENING

Focus Group for Parents and Carers



## Amplifying Voices, Empowering Futures!

Your Voice Matters

### Let's Share

Representatives for Thurrock SEND, Thurrock SEND Family Form and the National Deaf Children's Society, invite you to attend a virtually interactive session where we come together to share experiences, insights, and thoughts. Your feedback plays a crucial role in shaping better outcomes for the deaf children, young people and their families living in Thurrock.

From the earliest stages of development through different life phases, each part of our journey presents unique challenges and opportunities. Your perspectives are invaluable in guiding us towards positive change. Together, let us empower our community's futures through your valuable feedback.

### Let's Discuss

We warmly invite you to join us on 29th November 2024 to hear directly from NDCS and to share your personal experiences. Following the launch of 'Amplifying Voices, Empowering Futures,' we will announce additional sessions focusing on specific areas of SEND. Sessions could include, but are not limited to:

- Speech and Language
- Transitions: Share your insights on moving between different educational stages.
- Resources: Discuss the effectiveness and accessibility of tools such as radio aids.
- The importance of nurturing deaf identity and enhancing cultural awareness.

### Let's Talk

Venue: Online via Microsoft Teams Meeting

Date : Friday 29th November

time: 6pm-7.30pm

To book: [click here to complete your registration](#)





# SEND in Focus

 [thurrock.gov.uk](https://thurrock.gov.uk)



Your Aspirations, Our Priority

## ALL THINGS THURROCK SEND: MONTHLY PARENTAL ENGAGEMENT

WITH ASSISTANT DIRECTOR FOR EDUCATION AND CHILDREN'S COMMISSIONING  
AND PORTFOLIO HOLDER FOR CHILDREN'S SERVICES & EDUCATION

We invite you to join us and share your thoughts on the following topics:

- Your experiences with the Special Educational Needs and Disabilities (SEND) service.
- Your insights on inclusion and offer of timely support within the school or educational setting your child / young person attends.
- Your experiences during phase transitions.
- Your experiences related to accessing the local community with your child / young person.



06 DEC, 2024 - 10AM  
17 JAN, 2025 - 11AM  
27 FEB, 2025 - 10AM  
28 MAR, 2025 - 10AM  
25 APR, 2025 - 10AM  
16 MAY, 2025 - 10AM  
18 JUN, 2025 - 10AM  
04 JUL, 2025 - 10AM



**RESERVE YOUR SPOT TODAY!**

-  [QASEND@thurrock.gov.uk](mailto:QASEND@thurrock.gov.uk)
-  Thurrock SEND Local Offer



# Diary Dates

Wednesday 4th December 2024	Pantomime (09:30am – all years)
Tuesday 10th and Wednesday 11th December 2024	Reception, Year 1 and Year 2 Christmas Performances 9:30am and 1:30pm
Wednesday 11 <sup>th</sup> December 2024	PFA Christmas Craft with KS2 in school
Wednesday 11 <sup>th</sup> December 2024	Reception, Year 1 and Year 2 Christmas Performances 9:30am and 1:30pm
Thursday 12 <sup>th</sup> December 2024	PFA Christmas Craft with KS1 in school
Thursday 12 <sup>th</sup> December 2024	National Christmas Jumper Day
Monday 16 <sup>th</sup> December 2024	Christmas Assembly hosted by Rev. Michelle in school
Wednesday 18th December 2024	Christmas Dinner Day
Friday 20th December 2024	Non-Uniform Day
Friday 20th December 2024	Last day of Autumn Term
Monday 6th January 2025	Inset Day
Tuesday 7th January 2025	First day of Spring Term

# Do you need support?

## East Tilbury Primary Schools Online Pastoral Support.

We are very excited to launch our new Pastoral service to our school community. From today you can access support by completing a simple and quick online form.

We have been working hard over the last few months to set up extra support for our families which is very much needed at this challenging time. If you require support, then please do not hesitate to reach out. We are hoping this service will be a fantastic addition to the support we can provide for our school community. Please reach out if you need anything, we are always here to offer you support.

To make the process simple we have created a QR Code (at the top of the poster) which you can just scan, and this will take you directly to the form.

## WE CAN HELP WITH

- Food
- School Uniform
- Hygiene Products
- Wellbeing

## FOR MORE INFORMATION VISIT:

[www.easttilburyprimary.thurrock.sch.uk](http://www.easttilburyprimary.thurrock.sch.uk)



# Class News

## Reception

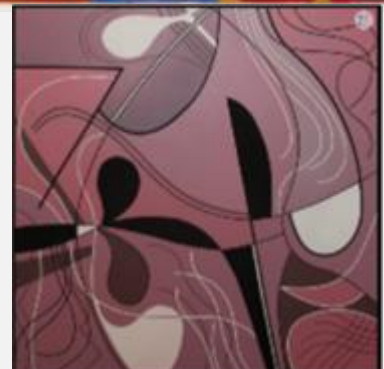
This week in Reception we have been very busy! In English we have been trying to use our known sounds to write words and phrases in the style of a travel brochure. On Monday we took an adventure on an aeroplane to go on holiday where we then talked about what we were going to eat, see and do! We are getting really confident at using our sounds in our writing and using our sound mats to support us.



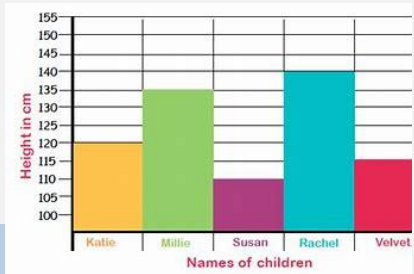
In maths we have continued to look at numbers to 6 and exploring 1 more and 1 less within 6. We have been using songs and rhymes to support us with our counting.

## Year One

In today's lesson we explored different media. We looked at the work of different artists including Wassily Kandinsky, Renata Bernal and Ily Bolotowsky and identified how they use geometric shapes in their artworks. We then created our own artworks using overlapping shapes and various media to fill each section, before evaluating pros and cons of each media with a partner.



# Class News



## Year Two

In English this week, continuing with our learning about George and the dragon, we have been creating our own innovative ways to capture a dragon. We had to think carefully about embedding captivating verbs and appropriate adjectives into our writing.

In maths this week, we have started a new unit on data collection. Most children are now able to collect data and represent this in a range of ways such as tally and bar charts, labelling the axes accordingly.

For our PSHE lesson this week, we thought carefully about peer pressure and how this can have both positive and negative effects. In a positive sense, peer pressure can encourage us to try new things with the support of our peers. When discussing negative peer pressure, children were keen to note that when something doesn't feel right, they should always talk to an adult.

Please encourage your children to use google classroom to practise the songs for the KS1 nativity. They have worked so hard during this week's rehearsals and cannot wait to show all parents and carers.

## Year Three

What an amazing week we've had in Year 3! This week, we had a whole school assembly lead by Mr Gowland which focused on our schools' co-operative values!

In English we have continued with our sentence stacking lessons as we embark on creating our very own holiday brochure for Skara Brae. Our enthusiastic learners have been using alliteration, similes and persuasive language, discovering how to entice and engage potential visitors to this incredible destination. Next week we will be moving on to our independent write.

Our budding scientists this week have been learning about magnets and how they attract and repel. They have also looked at the magnet inside a compass and used a compass to navigate our way around the classroom.

Year 3 is buzzing with excitement as they embark on a new project, and they need your help! We are on the lookout for jars and food magazines to inspire our little chefs in the classroom!

If you have any spare jars (think jam, pasta sauce, or even spice jars) and food magazines you no longer need, we would be incredibly grateful for your donations.

Please drop off your donations at the school office or directly to the year 3 teachers.

Thank you for your continued support and enthusiasm for our children's learning journey!

# Class News

## *Year Four*

In English this week, we have been mixing fiction and nonfiction by creating a newspaper report about the Evil Queen Sychorax's plan to eradicate Encanzo's kingdom of all magic creatures, mages and fantastical beasts. We designed the front cover, gave our newspaper a name such as the Goblin Gazette and Elf Echo and conducted interviews with each other. These characters and settings come from *Wizards of Once* by Cressida Cowell.



## *Year Five*

In year 5 this week, we have begun our work around *The Snowman*, a magical tale from the 1980s. The story has captivated us all, and some of the creative writing produced has been fantastic!

In PE lessons we analysed and practised the shooting skill in netball, and we ended our lessons with highly competitive games.

In History, we explored the role of women and children during the First World War and in science we looked into water resistance and buoyancy.



# Class News

*Year Six*

## Cyber Safety and Refraction.

This week, we have been learning lots of important aspects of life – from the importance of staying safe in the digital world (delivered by an officer from Essex Police) to the magic of light travelling through different mediums: refraction. Each class had an hour's discussion about online safety, and how posting and messaging online requires us to THINK before we post, or otherwise the consequences we might face:

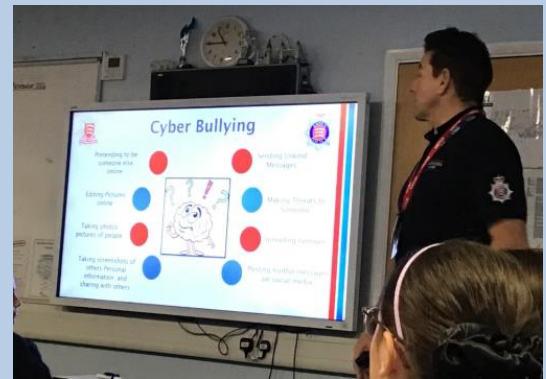
T – Is it true?

H – Is it helpful?

I – is it inspiring?

N – is it necessary?

K – is it kind?



Elsewhere, in science, we investigated how water in a glass can make things flip around or disappear as we observed the Amazing Arrow and Incredible Ink experiments. We established how water refracts light so it can either flip before it reaches our vision or never make it back to our eyes to begin with. In mathematics we have been working on fraction calculations, and in English we are writing a letter to Scrooge to tell him to welcome in some Christmas cheer!

We look forward to next week, where Pantomimes and Geographical Field Work awaits.





# Reach for the Stars



Our 'Stars of the Week' are the children that have gone over and above in their efforts. We are very proud of them for their achievements and thought they deserved an extra-special mention!

RBG	Sumayyah	For being a good role model – especially during Christmas singing rehearsals.
RES	Aderinsola	For working really hard on her writing.
RFK	Amayah	For great participation and engagement in phonics.
1BA	Kirrelle	For being a great role model to her peers and working hard across all subjects.
1EC	Scott	For his effort in his learning.
1LD	Poppy R	For working hard in phonics and great storytelling.
2RM	Jaxson	For working really hard in English this week.
2CH	Evie	For working hard to extend her sentences this week.
2MF	Josiah	For making right choices and showing hard work towards learning.
2BG	Michael	For showing amazing understanding in his maths his week.
3ML	Ollie W	For his effort and focus in all lessons.
3RS	Zeniyah-Zoe	For working hard across all subjects and being a great model to others.
3SG	Lunah R	For showing self-responsibility towards her learning, especially in reading skills.
3VP	Fareeda	For showing self-responsibility in all subjects and for always being a good role model to her peers.
4CP	Ayah A	For settling in really well so far this Half Term.
4KC	Nojus N	For always staying focused and contributing ideas in every lesson.
4MR	Luke T	For showing self-responsibility towards his learning, especially in computing.
5NM	Tola	For being a good role model, demonstrating self-responsibility in all areas of learning.
5SA	Inaaya M	For improving her pace in maths and contribution in lessons.
5TH	Ava	For her outstanding use of vocabulary in lessons.
6AB	Danisha M	For improvement in her writing and increased confidence in lessons.
6LC	Italia S	For demonstrating self-responsibility towards her learning in all subjects.
6NB	Kian	For taking onboard feedback to improve upon his best.



# Maths Marvels



All pupils at East Tilbury Primary have logins for Times Tables Rockstars and are able to log on at home to practice their times tables.

## 25th November - 29 November 2024

5NM

2105

5TH

293

5SA

64

## 25th November - 29 November 2024

1LD

9

1BA

8

1EC

1

1FK

0

## 25th November - 29 November 2024

2MF

31

2CH

24

2SBG

0

## 25th November - 29 November 2024

3SG

347

3RS

204

3ML

17

3VP

14

## 25th November - 29 November 2024

4CP

74

4MR

57

4KC

4

## 25th November - 29 November 2024

6LC

2272

6NB

1606

6AB

245

# What Parents & Educators Need to Know about

# SNAPCHAT

AGE RESTRICTION  
**13+**

SNAP STREAK

**97**  
DAYS

Snapchat is a messaging app which allows users to send images, videos and texts to others. Its best-known feature is that anything sent 'disappears' 24 hours after it's been viewed; however, users are known to take screenshots or use another device to obtain a photo of their screen. In 2023, Snapchat added a chatbot function called 'My AI'.

## WHAT ARE THE RISKS?

### ARTIFICIAL INTELLIGENCE

My AI is Snapchat's new chatbot, which replies to questions in a human-like manner. However, the software is still in its infancy and has significant drawbacks, such as biased, incorrect or misleading responses. There have already been numerous reports of young users turning to AI for medical help and diagnoses, which could be inaccurate and therefore potentially dangerous.

### PREDATORS AND SCAMS

Predators can exploit Snapchat's disappearing messages by, for example, telling a user they have naked photos of them and will post them unless they're paid. Snapchat's own research found that 65% of teenagers had experienced this – on this app or others. This likely isn't helped by 'SnapMaps' – a feature which highlights your exact position in real-time. This is meant to help friends keep track of each other, but could be used for more sinister reasons.

### MY EYES ONLY

Snapchat has a hidden photo vault called 'My Eyes Only'. Teens can conceal sensitive photos and videos from parents and carers in this folder, which is protected by a PIN. You can check for this by clicking on the icon which looks like two playing cards. This takes you to the 'Memories' folder which stores photos, stories and the My Eyes Only folder.

### SCREEN TIME ADDICTION

Snapchat prioritises user engagement, with features like streaks (messaging the same person every day to build up a high score). The app also has sections called 'Discover' and 'Spotlight', which show tailored content to each user. However, this could also be seen as an attempt to hook users into watching videos endlessly. Furthermore, constant notifications can lure people into using the app.

### INAPPROPRIATE CONTENT

Some content on Snapchat simply isn't suitable for children. The hashtags used to group content are determined by the poster, so even an innocent search term could still yield age-inappropriate results. The app's 'disappearing messages' feature also makes it easy for young people to share explicit images on impulse – so sexting continues to be a risk associated with Snapchat.

### ONLINE PRESSURES

Although many of Snapchat's filters are designed to entertain or amuse, the 'beautify' effects on photos can set unrealistic body image expectations – creating feelings of inadequacy in younger users. Snapchat now also has 'priority' notifications (which still get displayed even if a device is in 'do not disturb' mode), increasing the pressure on users to log back in and interact.

## Advice for Parents & Educators

### UTILISE PARENTAL CONTROLS

Snapchat's 'Family Centre' lets you view the details of the child's account – their friends list and who they've spoken to in the last week – and report any concerns. You must invite a child to the Family Centre for them to join. To keep the child's location hidden on the app, go into settings and turn on 'Ghost Mode' and 'Hide Live Location', and ensure they know not to share their location with anyone.

### BLOCK AND REPORT

If a stranger does connect with a child on Snapchat and begins to make them feel uncomfortable through bullying, pressure to send explicit images or by sending sexual images to them, the child can tap the three dots on that person's profile and report or block them. There are options to state why they're reporting that user – such as annoying or malicious messages, spam or masquerading as someone else.

### FAMILIARISE YOURSELF

Before you allow a child to download Snapchat, download it yourself and familiarise yourself with the app. Snapchat has produced a parents' guide to the app to help you understand how it works and any protections they have in place. A link for this can be found in the sources below.

### ENCOURAGE OPEN DISCUSSIONS

Snapchat's risks can be easier to handle if you nurture an open dialogue. For example, discuss My AI's responses to questions and how reliable they are. Talk about scams and blackmail before letting children sign up. If they're lured into a scam, encourage them to tell you immediately. Talk openly and non-judgementally about sexting, emphasising its inherent risks. Furthermore, explain how popular 'challenges' on the platform can have harmful consequences.

### Meet Our Expert

Dr Claire Sutherland is an online safety consultant, educator and researcher who has developed and implemented anti-bullying and cyber safety policies for schools. She has written various academic papers and carried out research for the Australian government comparing internet use and sexting behaviour of young people in the UK, USA and Australia.



#WakeUpWednesday

The National College

# BE BRIGHT & BE SEEN

*this winter*



Now that the clocks have gone back and it's getting darker earlier on, it's more important than ever to make sure you can be seen when you're out and about near roads.

There are loads of ways to be seen and stay safer  
- so check over the page for some top tips!

# 5 top tips on how to **BE BRIGHT & BE SEEN**

- 1** Brightly coloured or fluorescent clothing shows up well in daylight and at dusk when you're heading to and from school.
- 2** If you're out and about when it's dark, wear reflective gear to make sure you can be seen in car headlights. Reflective vests, sashes or wristbands work well. Remember, fluorescent clothing doesn't work after dark!
- 3** Don't forget to accessorise! Even small items such as clip-on reflectors, armbands and stickers on your outfit or school bag are a great way to improve your visibility.
- 4** If you like to cycle, remember that it's the law to have clean and working lights at night (white at the front, red at the back), as well as a rear reflector. It's good to fit spoke reflectors too.
- 5** Of course, 'Being Bright' isn't the only way to stay safer. If you're out at night, choose routes and crossing places that are well lit and remember to always use the Green Cross Code.

For more road safety tips, games and videos, visit the Tales of the Road website at [www.direct.gov.uk/talesoftheroad](http://www.direct.gov.uk/talesoftheroad)

**Be Bright,  
Be Seen**

**THINK**

# Keep in Touch



Our school office is open to receive calls between 8:30am and 3pm.

Tel: 01375 846181

Email: [office.etp@osborne.coop](mailto:office.etp@osborne.coop)

East Tilbury Primary School

Princess Margaret Road  
East Tilbury, Essex, RM18 8SB



We are also regularly updating our Facebook page and Twitter feed. Log on and have a look!



Twitter:  
[@EastTPrimary](https://twitter.com/EastTPrimary)



At East Tilbury Primary School our Designated Safeguarding Leads (DSL) are:

- Mrs Dawson

Due to the size of the school, we have the following designated staff who can deputise in the Headteacher's absence:

- Mr Gowland
- Mrs Jarvis
- Mrs Mylam
- Mrs Allen
- Mrs Sheridan

Pupils can contact any of our Safeguarding Team during the school day.

Worried about a child? You can phone or write to MASH about your concerns. Phone immediately if you believe it is urgent.

**Thurrock MASH (Multi Agency Safeguarding hub), Civic Offices, New Road, Grays, Essex, RM17 6SL, Tel: 01375 652802. Emergency Duty Team (for out of hours) 01375 372468. · Police Child Abuse Investigation Team 01277 266822 or call 999 if you are concerned a child needs immediate protection. · Childline 0800 11 11 [www.childline.org.uk](http://www.childline.org.uk) · NSPCC 0808 800 5000 [www.nspcc.org.uk](http://www.nspcc.org.uk); [www.facebook.com/nspcc](https://www.facebook.com/nspcc)**



**Tues 14:00-16:00:** St. Mary's Church hall, St. Mary's Church, Dock Rd, Grays, RM17 6EX.

**Tues 11:00-13:00:** St. John the Baptist Church, Tilbury, Dock Road, Tilbury, RM18 7PP

**Weds 11:00-13:00:** Gateway People's Centre, High Street, Stanford Le Hope, Essex, SS17 0EY

**Weds 13:00 -14:30:** Sockets Heath Baptist Church, Premier Avenue, Grays, RM16 2SB

**Thurs 11:00-13:00:** St. Francis Centre, Somerset Rd, Linford, SS17 0QA

**Thurs 11:00-13:00:** All Saints Church of England, Foyle Drive, Sth Ockendon, RM15 5HF

**Fri 10:12:00:** St. Stephen's Church of England, London Rd, Purfleet, RM19 1QD

**Sat 09:30-11:30:** Emmanuel Church of England, Sleepers Farm Rd, Chadwell St. Mary, RM16 4TP

**Sat 10:00-12:00:** All Saints Church of England, Foyle Drive, Sth Ockendon, RM15 5HF

**Sat 10:00-12:00:** Christian Gates of Praise International Christian Centre, 79-83 London Rd, RM175YF

September 2024							October 2024							November 2024							December 2024						
M	T	W	T	F	S	S	M	T	W	T	F	S	S	M	T	W	T	F	S	S	M	T	W	T	F	S	S
						1		1	2	3	4	5	6					1	2	3							1
2	3	4	5	6	7	8	7	8	9	10	11	12	13	4	5	6	7	8	9	10	2	3	4	5	6	7	8
9	10	11	12	13	14	15	14	15	16	17	18	19	20	11	12	13	14	15	16	17	9	10	11	12	13	14	15
16	17	18	19	20	21	22	21	22	23	24	25	26	27	18	19	20	21	22	23	24	16	17	18	19	20	21	22
23	24	25	26	27	28	29	28	29	30	31				25	26	27	28	29	30		23	24	25	26	27	28	29
30																					30	31					
January 2025							February 2025							March 2025							April 2025						
M	T	W	T	F	S	S	M	T	W	T	F	S	S	M	T	W	T	F	S	S	M	T	W	T	F	S	S
		1	2	3	4	5						1	2						1	2		1	2	3	4	5	6
6	7	8	9	10	11	12	3	4	5	6	7	8	9	3	4	5	6	7	8	9	7	8	9	10	11	12	13
13	14	15	16	17	18	19	10	11	12	13	14	15	16	10	11	12	13	14	15	16	14	15	16	17	18	19	20
20	21	22	23	24	25	26	17	18	19	20	21	22	23	17	18	19	20	21	22	23	21	22	23	24	25	26	27
27	28	29	30	31			24	25	26	27	28			24	25	26	27	28	29	30	28	29	30				
														31													
May 2025							June 2025							July 2025							August 2025						
M	T	W	T	F	S	S	M	T	W	T	F	S	S	M	T	W	T	F	S	S	M	T	W	T	F	S	S
			1	2	3	4						1			1	2	3	4	5	6					1	2	3
5	6	7	8	9	10	11	2	3	4	5	6	7	8	7	8	9	10	11	12	13	4	5	6	7	8	9	10
12	13	14	15	16	17	18	9	10	11	12	13	14	15	14	15	16	17	18	19	20	11	12	13	14	15	16	17
19	20	21	22	23	24	25	16	17	18	19	20	21	22	21	22	23	24	25	26	27	18	19	20	21	22	23	24
26	27	28	29	30	31		23	24	25	26	27	28	29	28	29	30	31				25	26	27	28	29	30	31
							30																				

	School Holiday
	Additional autumn half term (some Thurrock schools only)
	Inset days, schools closed to students
	Trust conference, schools closed to students
	Bank Holidays