



Newsletter

30th June 2023

Dear Parents and carers,

It has been another busy week at school with lots of exciting learning taking place.

Meet the new teacher

As we approach the end of this academic year and begin to think about September, it is important to be able to prepare the children for their new teacher and space they will be working in. Next Thursday, after registration, children in our current yR-y5 will be spending the morning with their new teacher in the classroom they will be working in from September. The children will spend time getting to know the teacher, as well as the teacher getting to know them. The children will also complete a range of activities designed to start preparing them for the year ahead. Normal drop off procedures will still apply.

PFA Adventure Island Poster design competition

Today you would have received an email with information relating to a poster competition for Adventure Island. This is an exciting opportunity for children to express their creative talents – all information can be found in your email and teachers would have spoken to the children about this in school today. We look forward to seeing the entries as they start to come in.

No Smart watches to be worn by children



Please could you avoid sending your child to school wearing a smart watch. These devices are expensive, and we wouldn't want a child getting upset because the watch had been lost or damaged in the busyness of school life. Also, these watches have quite advanced communication capabilities e.g. cameras, calling, access to internet and social media updates. This can lead to a safeguarding risk. Thank you for your support with this.

We wish you all a relaxing weekend ahead,

The Leadership Team



SEND Coffee Morning

The next SEND coffee morning is scheduled for Thursday 13th July at 9am and will be attended by a representative from the Children's Centre to share their available resources. We look forward to seeing you there.



CHALLENGE TIME...

COULD YOU: Learn a new skill, visit somewhere new, try a new food, read a new book, join a club and take part in a new activity, explore your community or... ?? THE POSSIBILITIES ARE ENDLESS!

OVER THE NEXT FOUR WEEKS WE WOULD LIKE YOU TO SET YOURSELF A CHALLENGE...

IS THERE SOMETHING YOU HAVE ALWAYS WANTED TO TRY?
COULD YOU INCREASE YOUR INDEPENDENCE OR CONFIDENCE?

Send your entries in the form of a story, drawing, photograph or craft to:
QASEND@THURROCK.GOV.UK

- Tell us why you wanted to do what you have chosen to do, and why you haven't been able to try it before
- Let us know how you felt having achieved your challenge; will it make a difference to you in school and at home?
- Did anyone help you and if so, what support did you need?
- What would you like to try next?

COMPETITION OPEN TO ALL 4 -16 YEAR OLDS FROM 12TH JUNE 2023

COMPETITION CLOSES 10TH JULY 2023

ENTRIES MUST BE FROM CHILDREN ON SEN SUPPORT OR WHO HAVE AN EHCP

PLEASE INCLUDE FULL NAME, AGE, DISABILITY / IMPAIRMENT AND NAME OF SCHOOL ON ALL ENTRIES.

Your aspirations, our priority

An Awareness Raising Session for Parents and Carers to Increase Knowledge of Gangs and Child Criminal Exploitation

Wednesday 17th May 2023
Thursday 14th September 2023
Thursday 7th December 2023

18.00 till 19.00
Via MS Teams

This session will identify the harms associated with gangs and county lines and will look on practical advice on how to support a young person who you may be concerned about in relation to Exploitation

To book your place visit www.thurrocklscp.org.uk



Absence

If your child is too ill to attend school, this must be reported to us by no later than **9.00am**. Please Telephone the school, press one and leave a message on the voicemail box stating your child's full name, class, the reason for absence and when we can expect them to return to school (if known).

Home Visits will be carried out for any child that is absent for 3 or more school days without reason.

POLITE NOTICE

We have had a number of reports of unsafe parking in the local area from drivers presumed to be collecting children from school. Please may we ask that, if you must drive to collect your child from school, your car is left somewhere that will not present a danger to pedestrians.

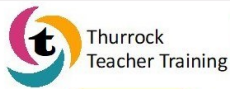
We are incredibly fortunate to have the improved carpark at the memorial park but, as it is not part of the school's property, we have no control over the length of time it is taking to complete. Once finished, this should provide more spaces and make parking safely much easier.

We must also reiterate that the driveway and turning point are NOT to be used as a place to park to collect children. Only those with prior arrangements to access the school car park should be entering the driveway.

PARKING

Could you please be vigilant and courteous if you bring your vehicle onto the school grounds and refrain from parking on any zig zag lines or on the zebra crossing.

The children's safety is of paramount importance.



Get into Teaching

St Clare's School

Lead ITT provider in the TTSA and in partnership with the TES institute are pleased to announce that trainee places are available for the academic year 2022/2023.

'Our trainees success rate
Securing QTS = 100%
Employed = 100%'



Our partner schools for 2022/2023 include:

Primary

Chadwell St. Mary, Deneholm, East Tilbury, Thameside, Stifford Clays, Harndon-on-the-hill, Stanford-le-Hope, Doddinghurst, Little Thurrock, Arthur Bugler, Warren Primary, Bonneygate, Woodside.

Secondary

Grays Convent, Marchalls Park, Ormiston Park Academy, St. Clare's School, William Edwards, The Gateway Academy, Brentwood, County High, Hathaway Academy, Thames Park

"The Tes course was brilliant, and I would definitely recommend it to others who are thinking of entering a career in teaching."

- 2022 Trainee

For all enquiries, please contact
thurrockteachertraining@osborne.coop

Are you a graduate? Have you thought about a career in teaching? East Tilbury Primary School are part of the Thurrock Teacher Training Partnership and we are looking for potential trainee teachers. Please contact Mrs Jarvis if you are interested or would like to know more.

Risk Assessments

If your child has an injury and has been given medical advice that we need to follow as a school, please bring them to the school office for 8.15am on their first day back at school following the injury so that we can complete a risk assessment.

Thank you for your cooperation.



Do you need support?



East Tilbury Primary Schools Online Pastoral Support.

We are very excited to launch our new Pastoral service to our school community. From today you can access support by completing a simple and quick online form.

We have been working hard over the last few months to set up extra support for our families which is very much needed at this challenging time. If you require support, then please do not hesitate to reach out. We are hoping this service will be a fantastic addition to the support we can provide for our school community. Please reach out if you need anything, we are always here to offer you support.

To make the process simple we have created a QR Code (at the top of the poster) which you can just scan, and this will take you directly to the form.



WE CAN HELP WITH

- Food
- School Uniform
- Hygiene Products
- Wellbeing

FOR MORE INFORMATION VISIT:

www.easttilburyprimary.thurrock.sch.uk

Please find more information about this on our school website or Facebook Page.



FREE and subsidised school milk
Register your child today!



Cool Milk
www.coolmilk.com

Is your child entitled to FREE milk?

Child under 5?

Every child under the age of five is entitled to FREE school milk.

 Register your child online for FREE school milk today.

Child over 5?

Every child over the age of five is entitled to milk at a subsidised price of around £16 per term.

 Register online now and you can pay straight away!

Register your child for school milk today.

Sign them up in a few clicks...



Go online and quickly register your child for school milk at www.coolmilk.com



Need help? Contact our Customer Service team on 0800 321 3248 or via email at registrations@coolmilk.com

The UK government continues to support school milk. Milk for under-5s is fully funded by DHSC via the Nursery Milk Scheme. Milk for over-5s is subsidised by Defra via the School Milk Scheme. Consery/registration no. 3603920 England

Cool Milk
www.coolmilk.com



Have you received an ASD diagnosis for your child?

Do you have questions or concerns?

Do you need someone to talk to?

The Specialist Health Visiting Team Nursery Nurse will be available for you on the last Monday of every month with a friendly face and a cup of tea at the Child Development Centre, Gifford House, Thurrock Community Hospital, Long Lane, Grays, RM16 2PX
09:30-10:30am



Important dates:

Monday 3rd July 2023	Year 2 school trip (2RM and 2MR)
Wednesday 5th July 2023	Potential Teacher Strike Day
3rd, 4th, and 6th July 2023	St Clere's Transition Days
Thursday 6th July 2023	Transition Morning
Friday 7th July 2023	Potential Teacher Strike Day
Monday 10th July 2023	Class Open event 3:15pm-5pm
Thursday 13th July 2023	Year 6 camping on the field
Friday 14th July 2023	Curriculum enrichment day
Friday 14th July 2023	Reports go out to parents
Monday 17th July 2023	Year 6 Bata Awards
Wednesday 19th July 2023	Year 6 leavers performance
Thursday 20th and Friday 21st July 2023	INSET days—school closed to pupils
Monday 24th July 2023	First day of summer holidays



Please be aware that if you take holiday during this time, you will be subject to a penalty fine. This is school policy for all holiday applications during term time.

How are you?

Sad? Stressed? Anxious?

Worried? Tearful? Overwhelmed?

Want help?



Your Mental Health First Aider is

Miss. Mills

Training provided by



There are plenty of different types of support out there, and a Mental Health First Aider can help you access the support you need to feel better.

Mental Health First Aiders are a point of contact if you, or someone you are concerned about, are experiencing a Mental Health issue or emotional distress. They are not therapists or psychiatrists but they can give you initial support and signpost you to appropriate help if required.

To arrange a meeting, please contact me via email: mhfa.etp@osborne.coop



Osborne
Co-operative Academy Trust

**SUPPORT, INSPIRE &
MAKE A DIFFERENCE!**

BECOME A SCHOOL GOVERNOR



We are always looking for people that want to make a real difference for children and young people in the community.


Is this you?


If it is then becoming a governor could be just the thing for you!

Scan the QR code below with your phone's camera to watch a short video about what it's like to be a school governor at an Osborne Trust School...



If you are interested and want to know more, please call or email us...

 **01375 648966**

 **info@osborne.coop**

Self-help / Self-responsibility / Democracy / Equality / Equity / Solidarity

COMMIT TO BE FIT!

PE KIT

For PE this term all lessons will be athletics and a Striking and fielding (cricket or rounders).

Could all children please have a PE kit in school

everyday. If you are unable to provide your child with a PE kit please use our uniform shop as we will donate them to any families that cannot provide a PE kit for their child. Please ensure the PE kit is labelled and is in a bag labelled with your child's name.

PE kit should include

- Plain white T-shirt
- Navy shorts
- Tracksuit (for outdoor sports in the winter)
- Trainers/plimsolls (children should not be wearing their school shoes for PE. This can be a health and safety issue and also brings mud from the school field into the classrooms).

Thank you

Well done to all of the children for taking part in their sports day last week! We had 3 great events starting with Reception on Wednesday, KS1 and year 3 on Friday morning followed by years 4, 5 and 6 on Friday afternoon. The final overall results were-

1ST - BLUE OXFORD

2ND GREEN BATH AND RED CAMBRIDGE

3RD YELLOW WARWICK

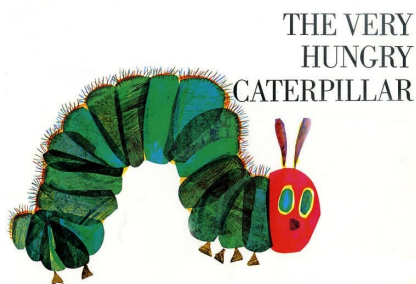
Well done

Reception

This week in Reception we have enjoyed reading the story *The Very Hungry Caterpillar* written by Eric Carle. We have looked at the life cycle of a butterfly, we have been writing sentences using adjectives to describe the different stages of the life cycle. One of our sentences was—Next the wiggly caterpillar spins and twirls into a cocoon. We have made butterflies from toilet rolls, cut leaves and herbs like a caterpillar munching through them, and created butterfly masks.

In maths this week we have been solving number problems, we had different characters that had to go onto a boat such as a chicken, a giraffe, a man and a snail, we had to work out which characters could go onto the boat by the different amount of legs.

Also, we have been celebrating diversity, we discussed how everybody is different, and that we are all special in our own unique way.



Year One

This week in PSHE, we have discussed what courage is and how we have shown it. We learnt that courage is the ability and willingness to overcome our fears. To gain a better understanding of what courage means, we listened to the story 'The making of Milton'. It taught us about courage and why it is important that we use the courage inside of us to try new things.

We then created our own 'Cup of Courage'. Inside of this cup, we wrote down lots of times we have shown courage in our lives and enjoyed sharing with our friends how being courageous helped us to have new experiences and learn new things.



	1p	
	2p	
	5p	
	10p	
	20p	
	50p	
	£1	
	£2	

Furthermore, we have explored the different types of coins in Maths. We looked at the similarities and differences between the coins, such as, some coins are bronze, some are silver, some are bigger, and others are smaller. We also discussed the value of each coin and were surprised to find out that a coin is not worth more just because it is bigger in size. After exploring the different types of coins, we worked together to group the coins into different categories, such as by value and colour. We then had lots of fun coin rubbing.

Year 2

This week was super special in Year 2 (2RS and 2NL) we went on our first ever school trip to Wat Tyler Country Park! First, we had an exciting bus journey! Then we met Steve and New, who were the nature experts at Wat Tyler. There were two activities that we participated in—pond dipping and bug hunting. We learned so much and had the best day ever! 2MR and 2RM go on Monday (lucky them).



Year Three

The highlight of the week, particularly in 3LD, has been watching a bird build its nest in the flowerpot outside our classroom window! We identified the bird as a wag tail and watched patiently and quietly as they collected materials and built their nest. We are being extra careful as we move around outside and are excited to see what happens!

In French this week we really enjoyed singing a song to help us learn the months of the year and played games and completed activities to build on the knowledge we have gained so far.

We have been learning about the features of informal letters this week in English and have enjoyed writing our own.

We have built upon our work on angles in Maths by learning about horizontal, vertical, perpendicular and parallel lines. We have also explored lines of symmetry. We have used our knowledge and explored, drawn and explained regular and irregular polygons.

In Science, we have been learning about muscles. We completed an activity where we used lolly sticks and elastic bands to simulate the elbow and how its movements relax and contract the muscles. It was lots of fun!

In recognition of diversity week, we discussed and celebrated our differences.



Year 4

Congratulations to Blue House last week for Sports day and well done to all Year 4 pupils who participated and demonstrated a growth mindset.

This week in Year 4, pupils have started to look at non-chronological reports and their features. We looked at the different types of non-chronological reports and were able to determine whether they met the success criteria or how they could be improved. In Maths, we are looking at Time, this includes how to tell the time and then applying this to contextual worded problems.

Additionally, we have learned how to identify various items of clothing in French and in PSHE, we focused on the importance of second chances (how we can learn to give them and what we can do to redeem ourselves once given).

Happy National Diversity Week! Due to this celebration, pupils also designed a collaborative display which placed an emphasis on showing friendship qualities to one another.

Due to the weather conditions, please provide caps and a bottle of water so we can ensure that pupils are well hydrated.

Year 5

In the last couple of weeks, pupils have been engaged in researching and learning about the renowned war artist, Paul Nash. Through a series of captivating activities and thought-provoking discussions, our pupils have delved into the life, inspiration, and unique artistic style of this remarkable figure.

In Lesson 1, the children learned about Paul Nash's early years as an artist and his profound connection to nature. They embarked on a sketching adventure, exploring various outdoor spaces and capturing their observations through half-page sketches. The sketches were not mere representations but were beautifully annotated, highlighting the children's keen observations and personal interpretations.

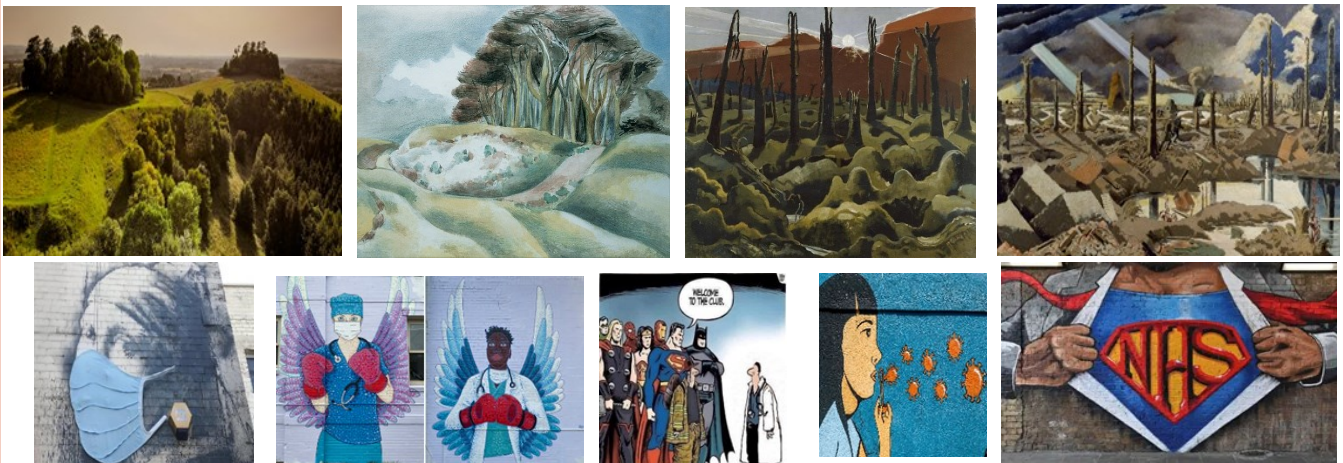
To further their understanding, the students watched fascinating video clips and carried out online research that shed light on Paul Nash's fascination with the British landscape, surrealism, and his interpretation of the environment through a unique personal mythology. They compared a photograph of the Wittenham Clumps to one of Nash's painted pictures, discovering his mastery in infusing landscapes with mysterious and sometimes eerie qualities.

In Lesson 2, the focus shifted to Paul Nash's experiences as a soldier in World War I. Through thought-provoking discussions and an exploration of art from the 2020 Covid lockdowns, the children related their own experiences to the significance of major historical events. They analysed Nash's WWI portraits, such as "The Menin Road," which depicted destruction, smoke, soldiers, and ruins, evoking the impact of war without explicitly showing death.

The students considered some of Nash's landscape paintings depicting the desolate world of soldiers and the devastations wrought by war. They discussed why Nash chose to create his paintings in a different way, exploring the profound emotional impact behind his artistic choices. Furthermore, they explored Nash's influences from abstract art and surrealism, understanding how he incorporated unexpected elements and perspectives to evoke specific feelings or emotions.

Next week, the children will delve deeper into Paul Nash's later works as one of the founding members of British surrealist art. They will explore how he used abstract objects in unconventional locations and will create their own surrealist artworks for display, drawing inspiration from Nash's artistic vision.

We are incredibly proud of the enthusiasm and creativity demonstrated by our pupils throughout these lessons. Their engagement and understanding of Paul Nash's artistry have been impressive.





Year 6 News

NEWS ALERTS

Sports Day

On Friday 23rd June, on a scorchingly hot afternoon, Y6 pupils joined Y4 and Y5 for our annual Sports Day. A great afternoon was had by all- the pupils showed great sporting talent and team work and it was lovely to see so many parents supporting their children's final primary school sports day.

Swimming Gala

On Saturday 24th June, 8 of our Y6 pupils took part in the OCAT swimming gala at Basildon Sporting Village. East Tilbury were the only primary from the Trust taking part so swam against Y7 pupils. Our swimmers were amazing with all of our team being placed in the top 3 for each race they competed in. They all received a trophy for their awesome participation and Renat and Lily May were awarded 'Best Swimmer' within their year group.

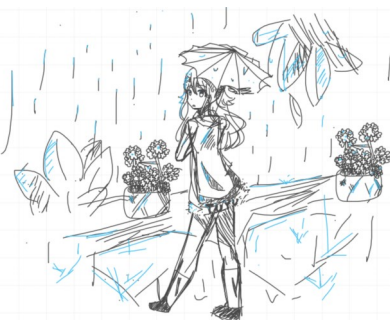


Transition:

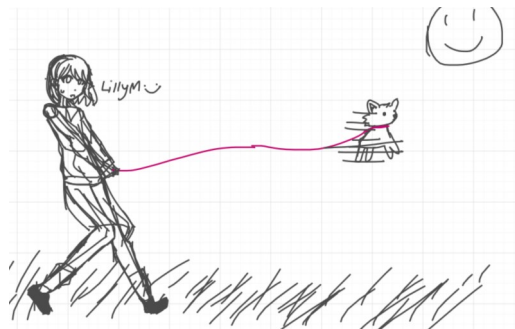
Y6 pupils are on transition to their secondary schools for 3 days next week, they will all have fun and enjoy meeting new people and making new friends.

Artists:

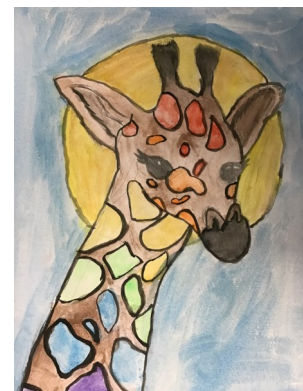
Two of our Y6 pupils have been sharing their impressive artistic talents:



Lilly M



Daisy



D

Weather:

As the weather remains warm, may we remind pupils to dress appropriately for the conditions and consider the use of sun cream and hats etc.

Have an amazing weekend!

Year 6 Team

What Parents & Carers Need to Know about

PETS

AMINO

AGE RESTRICTION
12+

WHAT ARE THE RISKS?

MODERATION GAPS

Amino has a 12+ classification in the App Store and a 'Teen' rating on Google Play. However, certain communities on the platform have little to no moderation in place – increasing the potential for more adult-themed content to reach young users. It's also possible to create an account without proof of age, raising the possibility of even younger children finding their way onto the platform.

UNSAFE CONTENT

The central concept behind Amino is for users to share content, then make and receive comments on these uploads. The level of anonymity that the platform offers (someone's true identity can be completely obscured behind their username, for instance) means that it would be extremely difficult to stop suggestive or outright predatory comments and messages being sent to young people.

INAPPROPRIATE IMAGES

Like most social media, Amino offers easy sharing of images. Its community guidelines state that any suggestive photos of under-18s will be removed immediately, but of course this doesn't prevent inappropriate pictures being seen by a young person. Not all of Amino's communities are rigorously moderated, so there's a chance that some unsuitable images could temporarily evade detection.

Amino is a social media platform offering a large group of subcommunities under one digital 'roof': it was envisaged as the online version of a convention, where fans gather to celebrate a shared interest like comic books or sci-fi, for example. While many such platforms are harmless spaces for devotees of a certain TV show or video game to congregate, there are still some aspects that trusted adults should be aware of. With a focus on sharing user-generated content, the idea of Amino is for users to communicate with like-minded individuals – but even that can create plenty of hazards.

COMICS & COSPLAY



MUSIC

MEMBERSHIP COSTS

Amino+ is a premium membership for the platform, offering a bevy of customisation options such as stickers, 'moods' to display and an exclusive profile badge. Users can also purchase one-off cosmetic items including different styles of chat bubbles or profile frames, if your child has payment methods available via their device, they could potentially make these in-app purchases without you realising.

REPEATED USAGE

As a social media app, Amino is focused on keeping its communities engaged and coming back for more. Part of this approach is encouraging people to build up 'streaks', as users are awarded 'reputation points' for logging in regularly. This type of mechanism, of course, always carries the risk of young people feeling a competition to repeatedly check in with the app, further increasing their screen time.

Advice for Parents & Carers

TALK ABOUT IT

If your child is old enough and chooses to download and use Amino, it's probably wise to remind them of some online safety basics – such as how not everyone in the digital world is who they claim to be, for example, or not to give out personal information online. It might also be a good idea to go into the app's settings and disable incoming chat requests from users that your child doesn't know.

STAY UPDATED

Ensure that your child knows to report any upsetting or worrying online content they might see to you. As much as possible, try to stay aware of which communities they're joining on Amino. Most of these areas are well moderated and full of innocent conversation about common interests, but on any platform of this breadth, there's always the potential for chats to veer off into potentially harmful places.

MEMBERSHIP MEDIATION

If your child asks for an Amino+ membership but you're not entirely comfortable with that, be prepared to explain your decision in depth. Young people's sense of injustice can naturally become inflamed when their friends have things that they don't. Parents of older teens, meanwhile, might actually decide to agree to the membership request but continue to monitor their child's activity on the app.

MONITOR SCREEN TIME

If you haven't already, you might want to consider setting up controls such as Family Sharing (on iOS devices) or Family Link (on Android) so, from your own device, you can keep an eye on how much screen time your child is having – and what apps they're spending it on. This can be extremely useful with regard to platforms such as Amino, which can be quite addictive and reward repeated use.

Meet Our Expert

Lloyd Coleman is Editor in Chief of gaming and esports site GGWise and has worked in the gaming media for around four years. A regular visitor to the App Store to try out new titles, he's also a parent who understands the value of online safety, writing mainly about both and fitness. His articles have been published on influential sites including IGN and TechRadar.



NOS
National Online Safety®

#WakeUpWednesday

Source: <https://www.dailymail.co.uk/news/scorsh-News/Columnist-After-daughter-18-1879338>

@natonlinesafety

/NationalOnlineSafety

@nationalonlinesafety

@national_online_safety

Users of this guide do so at their own discretion. No liability is entered into. Current as of the date of release: 26.08.2023

REACH!! FOR THE STARS

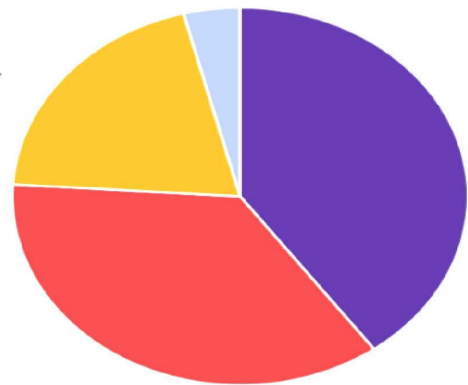
Our 'Stars of the Week' are the children that have gone over and above in their efforts. We are very proud of them for their achievements and thought they deserved an extra-special mention!

RJG	William	For always trying his best in independent writing.
RMB	Chukwukanyima	For working hard to become an independent and resilient learner.
RFC	Lyla-Rose	For writing simple phrases independently.
RES	Renaesmae	For being a caring and helpful friend.
1CH	Noah Woody	For always being outstanding role models.
1GC	Callum	For having a positive attitude towards his learning.
1FK	Eniola	For being an amazing role model.
1BA	James M	For his amazing summer acrostic poem.
2MR	Hallie	For her incredible maths work and excellent writing this week.
2RS	Violet	For her great effort in English this week.
2NL	Poppy B	For her amazing effort and engagement on the school trip! Poppy put 100% effort into every activity.
2RM	Victoria L	For her consistent hard work and effort in the classroom.
3EC	Logan G	For being an excellent role model.
3LD	Eden	For taking great care in the presentation of her work and always trying her very best in everything she does.
3NM	Frankie	For overcoming her worries and speaking to different adults and demonstrating determination to improve her reading fluency
4TH	Levi C	Settling in so well to life at ETP.
4BG	Elsie-Mae B	For showing resilience in all her lessons.
4SA	Ellie GW	For showing self-responsibility of her work through her consistent use of purple pen.
5AB	Chloe M	For always having a positive attitude towards her learning.
5JP	Alex	For showing resilience and working hard in lessons.
5NB	Millie-Ella	For an improvement in her attitude to learning.
6CP	Reggie J	For demonstrating self-responsibility to learn his lines.
6LC	Lilly M	Great work as a stagehand in our Y6 play
6VP	Emily S	For demonstrating solidarity during the Y6 plau

ETPS PFA Update



Splitting the £1.00



- **40p** goes to our school
- **36p** goes to cash prizes
- **20p** goes to admin costs
- **4p** goes to VAT

How it works...

It's simple—choose 6 numbers between 0-9 and if they match the weekly lottery draw, you win great prizes. One of our players will win a cash prize every week, maybe even the £25k jackpot! Tickets cost just £1 per week and the proceeds are donated to East Tilbury Primary School

Every Saturday at 8pm the numbers are drawn and posted online. Winners are notified by email and winnings paid into the account of your choice.

The easiest way to join our lottery is online at YourSchoolLottery.co.uk by direct debit or debit card.

It's so easy to join and will make a real difference to East Tilbury Primary School

The Maths... 100 tickets sold a week means
= £30 weekly cash prize
= £2,080 a year for our school



To start supporting, visit:
yourschoollottery.co.uk
and search for: **East Tilbury Primary**

Supporters must be 16 years of age or older





Do you receive any of the following?

- Income support
- Employment Support Allowance (Income Related)
- Income based Job Seekers Allowance
- Guaranteed Pension Credit
- Child Tax Credit and your income (as calculated by the Inland Revenue) is less than £16,190
- Universal Credit
- Receiving support under Part VI of the Immigration and Asylum Act of 1999
- In the Armed Forces

If you can answer yes to any of the above you may qualify for free school meals/Pupil Premium

The school office will help with your application. If your application is successful not only will your child receive free school meals, but our school will receive £1,300 additional funding (per child). This is called Pupil Premium.

All applications are confidential.





CRAFT FAIR

&

**INDOOR BOOT
SALE**

**FREE
ENTRY**

**EVERYONE
WELCOME**

**EAST TILBURY VILLAGE
HALL**

SUNDAY 2ND JULY

2PM-6PM

SUMMER FUN DAY

BOUNCY CASTLE



**WRIST BANDS
AVAILABLE**



**CRAFT
STALLS**



ICE CREAM

**EASTTILBURY.VILLAGEHALL@HOTMAIL.
COM**



**JOIN
THE
FUN**



Thurrock
Teacher Training

Get into Teaching

St Clare's School

Lead ITT provider in the TTSA and in partnership with the TES institute are pleased to announce that trainee places are available for the academic year 2022/2023.

*'Our trainees success rate
Securing QTS = 100%
Employed = 100%'*



Our partner schools for 2022/2023 include:

Primary

Chadwell St. Mary, Deneholm, East Tilbury,
Thameside, Stifford Clays, Horndon-on-the-hill,
Stanford-le-Hope, Dodinghurst, Little Thurrock,
Arthur Bugler, Warren Primary, Bonneygate,
Woodside.

Secondary

Grays Convent, Marshalls Park, Ormiston Park
Academy, St. Clare's School, William
Edwards, The Gateway Academy, Brentwood
County High, Hathaway Academy, Thames Park

"The Tes course was brilliant, and I would definitely recommend it to others who are thinking of entering a career in teaching."

- 2022 Trainee

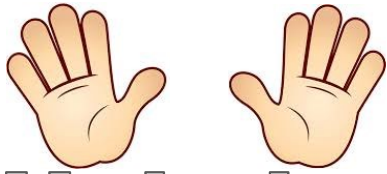


For all enquiries, please contact
thurrockteachertraining@osborne.coop

2022-2023 SCHOOL TERM DATES

September 2022							October 2022							November 2022							December 2022							
M	T	W	T	F	S	S	M	T	W	T	F	S	S	M	T	W	T	F	S	S	M	T	W	T	F	S	S	
			1	2	3	4						1	2											1	2	3	4	
5	6	7	8	9	10	11	3	4	5	6	7	8	9		1	2	3	4	5	6	5	6	7	8	9	10	11	
12	13	14	15	16	17	18	10	11	12	13	14	15	16	7	8	9	10	11	12	13	12	13	14	15	16	17	18	
19	20	21	22	23	24	25	17	18	19	20	21	22	23	14	15	16	17	18	19	20	19	20	21	22	23	24		
26	27	28	29	30			24	25	26	27	28	29	30	21	22	23	24	25	26	27	26	27	28	29	30	31		
							31							28	29	30												
January 2023							February 2023							March 2023							April 2023							
M	T	W	T	F	S	S	M	T	W	T	F	S	S	M	T	W	T	F	S	S	M	T	W	T	F	S	S	
						1			1	2	3	4	5			1	2	3	4	5							1	2
2	3	4	5	6	7	8	6	7	8	9	10	11	12	6	7	8	9	10	11	12	3	4	5	6	7	8	9	
9	10	11	12	13	14	15	13	14	15	16	17	18	19	13	14	15	16	17	18	19	10	11	12	13	14	15	16	
16	17	18	19	20	21	22	20	21	22	23	24	25	26	20	21	22	23	24	25	26	17	18	19	20	21	22	23	
23	24	25	26	27	28	29	27	28						27	28	29	30	31			24	25	26	27	28	29	30	
30	31																											
May 2023							June 2023							July 2023							August 2023							
M	T	W	T	F	S	S	M	T	W	T	F	S	S	M	T	W	T	F	S	S	M	T	W	T	F	S	S	
1	2	3	4	5	6	7				1	2	3	4						1	2		1	2	3	4	5	6	
8	9	10	11	12	13	14	5	6	7	8	9	10	11	3	4	5	6	7	8	9	7	8	9	10	11	12	13	
15	16	17	18	19	20	21	12	13	14	15	16	17	18	10	11	12	13	14	15	16	14	15	16	17	18	19	20	
22	23	24	25	26	27	28	19	20	21	22	23	24	25	17	18	19	20	21	22	23	21	22	23	24	25	26	27	
29	30	31					26	27	28	29	30			24	25	26	27	28	29	30	28	29	30	31				
														31														

	School Holiday
	Bank Holiday
	Additional Autumn Half Term (currently Thurrock schools only)
	Inset days, schools closed to students (20 th /21 st July payback for Twilight sessions)
	Trust Conference, schools closed to students



Help is at hand

Keep in touch!

We are missing being in contact but do not forget we are still here to help where we can.



Our school office is open to receive calls between 8:30am and 3pm.

Tel: 01375 846181

Email: office.etp@osborne.coop



East Tilbury Primary School
Princess Margaret Road
East Tilbury, Essex, RM18 8SB



We are also regularly updating our Facebook page and Twitter feed.

Log on and have a look!



Twitter: [@EastTPPrimary](https://twitter.com/EastTPPrimary)

At East Tilbury Primary School our Designated Safeguarding Leads (DSL) are:

- ◇ Mrs Bates
- ◇ Mrs Dawson

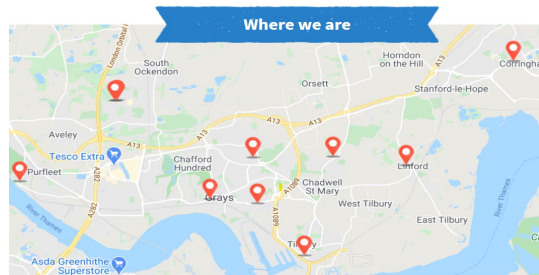
Due to the size of the school, we have the following designated staff who can deputise in the Head of School's absence:

- ◇ Mr Gowland
- ◇ Mr Bennett
- ◇ Mrs Jarvis
- ◇ Mrs Mylam
- ◇ Mrs Allen

Pupils can contact any of our Safeguarding Team during the school day.

Worried about a child? You can phone or write to MASH about your concerns. Phone **immediately** if you believe it is urgent.

[Thurrock MASH \(Multi Agency Safeguarding hub\), Civic Offices, New Road, Grays, Essex, RM17 6SL, Tel: 01375 652802. Emergency Duty Team \(for out of hours\) 01375 372468. · Police Child Abuse Investigation Team 01277 266822 or call 999 if you are concerned a child needs immediate protection. · Childline 0800 11 11 \[www.childline.org.uk\]\(http://www.childline.org.uk\) · NSPCC 0808 800 5000 \[www.nspcc.org.uk\]\(http://www.nspcc.org.uk\); \[www.facebook.com/nspcc\]\(https://www.facebook.com/nspcc\)](#)



LOCATIONS

Here are the opening times and locations for our foodbank centres. Everyone who comes to the foodbank for emergency food needs to have a valid foodbank voucher.

Tues 14:00-16:00: St. Mary's Church hall, St. Mary's Church, Dock Rd, Grays, RM17 6EX.

Weds 09:30-12:00: Thurrock Christian Fellowship, 2-4 Chase Rd, Corringham, S17 7QH

Weds 13:30-15:00: Sockets Heath Baptist Church, Premier Avenue, Grays, RM16 2SB

Thurs 11:00-13:00: St. Francis Centre, Somerset Rd, Linford, SS17 0QA

Thurs 11:00-13:00: All Saints Church of England, Foyle Drive, Sth Ockendon, RM15 5HF

Fri 10:12:00: St. Stephen's Church of England, London Rd, Purfleet, RM19 1QD

Sat 09:30-11:30: Emmanuel Church of England, Sleepers Farm Rd, Chadwell St. Mary, RM16 4TP

Sat 10:00-12:00: All Saints Church of England, Foyle Drive, Sth Ockendon, RM15 5HF

Sat 10:00-12:00: Christian Gates of Praise International Christian Centre, 79-83 London Rd, Grays, RM 17 5YF