

# School News

## A MESSAGE FROM THE SENIOR LEADERSHIP TEAM

Dear Parents and Carers,



### T100- Goes wild!

Over the last 10 years we have partnered with a local Arts organisation called Kinetika. Each year the organisation hosts a festival for families across Thurrock. For more information about this year's festival and how you can participate please visit: <https://t100festival.co.uk/2024-walks-goes-wild/>

### Keeping your children safe online

In school we often need to support children who have been upset by content viewed or shared online while outside of school. We urge all parents and carers to carefully monitor your children's devices and online use as in all situations we deal with they could have been avoided. Please see the information poster below for guidance (note that the age of use for WhatsApp has now been changed to 13+ still two years older than any of our primary aged children).

[Thinkuknow](#) - for advice from the National Crime Agency to stay safe online

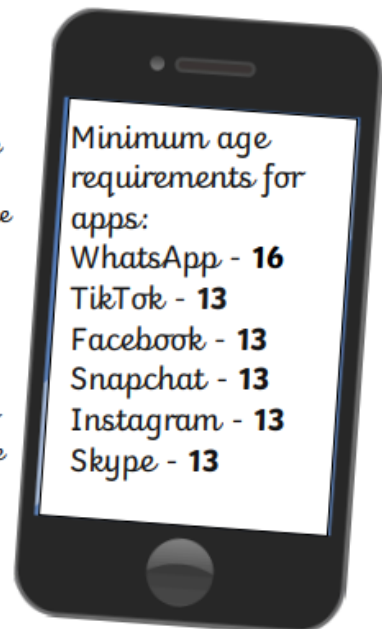
[UK Safer Internet Centre](#) - advice for parents and carers

#### **Online Research Tips**

- 1) Make your keywords as precise as possible. If you're looking for information on a Tyrannosaurus Rex, don't type in "dinosaurs".
- 2) Use two or more keywords in your search, but put the most important keywords first. For example, if you wanted information about what the T-Rex ate, you might use the following keywords in this order - Tyrannosaurus Rex diet. The search engine will look for web pages that contain all of these words.
- 3) Make sure you spell the keywords correctly.
- 4) Use a child-friendly search engine, such as [Kiddle](#).
- 5) Include the words - '**for kids**' - to help make the results more age appropriate.



Keeping a healthy dialogue with children about their online activity and a degree of monitoring, especially on messaging sites, and setting clear boundaries is the best way of keeping your child safe.



Minimum age requirements for apps:  
 WhatsApp - 16  
 TikTok - 13  
 Facebook - 13  
 Snapchat - 13  
 Instagram - 13  
 Skype - 13

These applications have age limits in place to keep users safe, and protect younger users from inappropriate contact and content.

We hope that you have a relaxing weekend, and please don't forget that we are not open on Monday!

School Leadership Team

# Upcoming Events



To support our daily biscuit time, we will be holding a non-uniform day on the last day of each half term.

For this day we are asking for a small voluntary donation or a packet of plain digestive biscuits.

Dates for these events each half term can be found on the weekly newsletter.



## Non-Uniform Day

Our next Non-Uniform Day will be on Friday 24th of May.

Monday 13<sup>th</sup> May –  
Thursday 16<sup>th</sup> May 2024

Year 6 SATS week

Date	Activity
Monday 13 May 2024	English grammar, punctuation and spelling papers 1 and 2
Tuesday 14 May 2024	English reading
Wednesday 15 May 2024	Mathematics papers 1 and 2
Thursday 16 May 2024	Mathematics paper 3

# Important Information



**FREE School Uniform**  
free for everyone,  
no referral needed!

**Events**

**Fridays**  
3 - 4.30pm

19th January  
16th February  
15th March  
19th April  
17th May  
21st June

**Saturdays**  
10 - 11.30am

20th January  
17th February  
16th March  
20th April  
18th May  
22nd June

**Community Church Chadwell St Mary**  
Defoe Parade (enter from Brentwood Road)  
RM16 4QR

**Save the planet 🌍, and your pennies 💰!**  
**Hundreds of items in stock:**

- Polo shirts
- Shirts & blouses
- Skirts
- Trousers
- Socks
- Pinafore dresses
- Jumpers & cardigans
- Blazers & ties
- PE kit incl football socks
- Plimsolls
- Black shoes
- Coats

Clean, good condition school uniform donations accepted when space allows. Please check our facebook page to see if we are currently collecting. Search facebook for "The 180 Project"

An event run by The 180 Project, part of Community Church  
Registered charity no. 1062301. Tel: 01375 484 101

We have a very limited stock of uniform due to our uniform store being in the RAAC area of the school. If you are in need of uniform please visit the 180 project at the Community Church in Chadwell St Mary.

If your child has an injury and has been given medical advice that we need to follow as a school, please bring them to the school office for 8.15am on their first day back at school following the injury so that we can complete a risk assessment. Thank you for your cooperation.

## Absence

If your child is too ill to attend school, this must be reported to us by no later than **9.00am**. Please telephone the school, press one and leave a message on the voicemail box stating your child's full name, class, the reason for absence and when we can expect them to return to school (if known).

Home Visits will be carried out for any child that is absent for 3 or more school days without reason.



# We need you



## Help Us Enhance our EYFS Outdoor Area! 🌳

Calling all kind-hearted donors! 🙏 We are thrilled to announce that we are working on transforming our Early Years Foundation Stage (EYFS) outdoor area into a vibrant, interactive space for our little learners. 🌈

Do you happen to have any of the following items that are yearning for a new purpose? If so, we would be incredibly grateful for your generous donations to our school. 📺❤️

Let's create an unforgettable outdoor haven where our little ones can explore, learn, and grow! 🌈🌱

### Can You Help Us?

We are looking for extra outdoor resources to help us support your child's learning and development. Any help, big or small, makes a big difference and you may be surprised by what we are looking for! Thank you for your support.

#### We Are Looking For:

- |   |  |
|---|--|
| <ul style="list-style-type: none"><li>• Guttering and tubes</li><li>• Funnels</li><li>• Cable drums and reels</li><li>• Pallets</li><li>• Tyres</li><li>• Steering wheels</li><li>• Crates</li><li>• Buckets and/or containers</li><li>• Gardening tools for children – trowels, watering cans, spade, brush</li><li>• Large, old furniture such as cupboards, chairs, tables (to create a mud kitchen)</li><li>• Utensils – spoons, tongs, scoops, ladles, rolling pins, potato mashers</li><li>• Cutlery, bowls and plates</li><li>• Pots, pans and muffin trays</li><li>• Jugs and funnels</li></ul> | <ul style="list-style-type: none"><li>• Soil and/or compost</li><li>• Bark chippings</li><li>• Seeds, bulbs and/or plants</li><li>• (Pine)cones, acorns, conkers</li><li>• Shells</li><li>• Sticks</li><li>• Leaves</li><li>• Bark</li><li>• Stones and pebbles</li><li>• Moss</li><li>• Flowers/petals</li><li>• Feathers</li><li>• Tree stumps and/or log slices of different size, heights and widths</li></ul> |
|---|--|



**Exciting News! Join Us in Enhancing Lunchtimes at Our School with OPAL 🌳🍌📖**  
Hey everyone! We're thrilled to share that we're taking our lunchtimes to the next level with our OPAL (Outdoor Play & Learning) initiative! ✨ Thanks to OPAL, our lunchtimes have already seen a positive transformation, and now, with your support, we can make them even better. 😊

#### 📺 Donation Wishlist:

- Prams (toy size and child size) 🧸
- Dolls & Teddy Bears (large and small) 🧸
- Lego 🧱
- Reading Books 📖
- Scooters 🛹
- Bike Helmets 🚲

Your contributions will help us create a more fun and engaging lunchtime experience for all our students.



# SEND in Focus

thurrock.gov.uk

## THE LOCAL OFFER

Information for parent and carers



### What is the Local Offer?

- The SEND Local Offer is designed to help improve the lives of children with Special Educational Needs and/or Disabilities (SEND), as well as their families and those who care for them.
- It provides information where individuals with SEND aged 0-25, as well as their parents or carers, and professionals can go to find out what support or provision they can expect to be available in their local area.
- Under the Children and Families Act 2014, each local authority has a legal responsibility to publish its Local Offer. It needs to be published online, as well as in an alternative format for those without internet access.

### The Local Offer will..

- Provide information about education, health, and care services.
- Offer details on leisure activities and support groups.
- Centralise all information in one accessible location.
- Encompass various local agencies, including education, health, and social care services.
- Cover childcare, independent schools, care placements, apprenticeships, transport, specialist teachers, therapy services, and other support
- Include relevant regional and national specialist provisions for children and young people with rare and complex SEND.

### You can:

- Browse by subject
- Listen to podcast episodes
- Find the latest service developments
- See our engagement calendar
- Family Newsletters
- Details on Thurrock SEND Family Forum
- Enter competitions

### Also included:

- Key word search functionality
- Accessibility functions



[www.askthurrock.org.uk](http://www.askthurrock.org.uk)

thurrock.gov.uk





# SEND in Focus

## Local & National SEND information, advice, and support organisations

### Parent Advisory Team Thurrock (PATT SENDIASS)

PATT provide free, confidential, and impartial information, advice and support to young people, and parents/carers of children, with special educational needs 0-25.

[www.patt.org.uk](http://www.patt.org.uk)

07702 127 252

[info@patt.org.uk](mailto:info@patt.org.uk)

Facebook: PATT SENDIASS  
PATT ADHD Support

### BATIAS

BATIAS provides advocacy to people with learning disabilities and also supports young people and adults with physical and sensory impairments, complex needs, and behaviours that challenge.

[www.batias.com](http://www.batias.com)

01375 389869

[batias.grays@batias.com](mailto:batias.grays@batias.com)

Facebook: BATIAS Grays

### Thurrock Centre for Independent Living (TCIL)

Information, support, advice, and advocacy for disabled people on a range of issues including radar keys, access to services, equipment, benefits, form filling and Lasting Power of Attorney

[www.tcil.org.uk](http://www.tcil.org.uk)

01375 389 864

[admin@tcil.org.uk](mailto:admin@tcil.org.uk)

### SNAP (special needs and parents)

SNAP is a charity for families from Essex, Thurrock and Southend who have any additional need or disability.

SNAP's aims are to inform, encourage and support parents so that they can grow in strength and knowledge and become better equipped to give the best possible help to their children.

[www.snapcharity.org](http://www.snapcharity.org)

Helpline: 01277 211 300

[info@snapcharity.org](mailto:info@snapcharity.org)

Facebook: SNAP Charity

### Thurrock Transport

#### Bus Pass

[www.thurrock.gov.uk/bus-passes/applying-for-your-bus-pass](http://www.thurrock.gov.uk/bus-passes/applying-for-your-bus-pass)

#### Thurrock Blue Badge Scheme

[www.thurrock.gov.uk/.../blue-badge-disabled-parking-scheme](http://www.thurrock.gov.uk/.../blue-badge-disabled-parking-scheme)

### DIAL

Disablement Information & Advice Line  
Support with benefits and form filling

[www.dialsouthessex.co.uk](http://www.dialsouthessex.co.uk)

0333 366 1045

[enquires@dialsouthessex.co.uk](mailto:enquires@dialsouthessex.co.uk)

### Thurrock lifestyle solutions (TLS)

18+

Day opportunities, short breaks, provision of PA's, transition houses, independent living, Liam's nightclub, supported employment, TACT programme

[www.choiceandcontrol.co.uk](http://www.choiceandcontrol.co.uk)

01375 370 460

E-mail: [info@choiceandcontrol.co.uk](mailto:info@choiceandcontrol.co.uk)

Facebook: Thurrock Lifestyle Solutions

### IPSEA

IPSEA offers free and independent legally based information, advice and support to help get the right education for children and young people with special educational needs and disabilities.

Book helpline calls via the website

[www.ipsea.org.uk](http://www.ipsea.org.uk)

### Sky Badger

Online resource for families with disabled children covering health, education, benefits, finance, legal and support.

[www.skybadger.co.uk](http://www.skybadger.co.uk)

### National Autistic Society Thurrock (NAS)

Support group for families with autistic children. Regular events for parents and holiday activities for families

07795 252 480

[nasthurrock.group@nas.org.uk](mailto:nasthurrock.group@nas.org.uk)

Facebook: NAS Thurrock

### Contact

Website has comprehensive directory of medical conditions and associated support groups. They have a listening ear service and provide training for parents and professionals.

Book listening ear and telephone advice calls via the website

[www.contact.org.uk](http://www.contact.org.uk)

### Cerebra

Cerebra's website has a comprehensive library of guides on a wide range of topics including benefits, financial issues, health & wellbeing, and sleep advice

[www.cerebra.org.uk](http://www.cerebra.org.uk)

### Shining Stars

Support group for families with Downs Syndrome.

Regular meet ups and events for families.

07903 081 572 or 07901 866 613

Email: [white0504@gmail.com](mailto:white0504@gmail.com)

Facebook: Shining Stars

### Thurrock SEND Family Forum

A voice for parents

We aim to be an active voice in promoting disability equality and challenging discrimination on all levels within the borough. We aim to actively challenge Thurrock council and health to influence better outcomes for the families in Thurrock.

[www.thurrocksendfamilyforum.org](http://www.thurrocksendfamilyforum.org)

Facebook: Thurrock SEND Family Forum

### The Local Offer Thurrock

The Local Offer aims to provide clear, comprehensive, and accessible information about what services and provisions are available in Thurrock for parents and young people.

[www.askthurrock.org.uk](http://www.askthurrock.org.uk)



# Diary Dates

Monday 6 <sup>th</sup> May 2024	Bank Holiday Monday – No school
Monday 13 <sup>th</sup> May – Thursday 16 <sup>th</sup> May 2024	SATS week
Friday 17 <sup>th</sup> May 2024	Curriculum Enrichment Day
Friday 25 <sup>th</sup> May 2024	Non-Uniform Day
Monday 27 <sup>th</sup> May – Friday 31 <sup>st</sup> May 2024	Half Term
Thursday 6 <sup>th</sup> June 2024	Class photos
Monday 1 <sup>st</sup> July 2024	Thurrock Infant Music Festival
Friday 19 <sup>th</sup> July 2024	Last day of term for pupils
Monday 22 <sup>nd</sup> and Tuesday 23 <sup>rd</sup> July 2024	INSET day – no school for pupils.

# Do you need support?



## East Tilbury Primary Schools Online Pastoral Support.

We are very excited to launch our new Pastoral service to our school community. From today you can access support by completing a simple and quick online form.

We have been working hard over the last few months to set up extra support for our families which is very much needed at this challenging time. If you require support, then please do not hesitate to reach out. We are hoping this service will be a fantastic addition to the support we can provide for our school community. Please reach out if you need anything, we are always here to offer you support.

To make the process simple we have created a QR Code (at the top of the poster) which you can just scan, and this will take you directly to the form.

## WE CAN HELP WITH

- Food
- Wellbeing
- Trip Payments

## FOR MORE INFORMATION VISIT:

[www.easttilburyprimary.thurrock.sch.uk](http://www.easttilburyprimary.thurrock.sch.uk)

Our school uniform shop is currently closed due to our stock room being affected by RAAC. If you need support with school uniform please visit the 180 project in Chadwell St Mary.

[mycommunitychurch.org.uk/community/projects](http://mycommunitychurch.org.uk/community/projects)



# Class News

## Reception

This week in Reception we have been reading the book 'Pigs Might Fly'. We have been learning new words to describe how quickly the aeroplanes were moving through the sky and we have enjoyed watching videos of aeroplanes doing tricks. In maths, we have been practising adding and subtracting, we have enjoyed using 10 frames to take away counters and see how many are left. We have also explored adding two different groups together and saying the total amount. We have been building our resilience this week and trying some difficult activities. We tried to make houses using spaghetti and play dough and we tried to build a house of cards.



## Year One

In year one, we have been identifying and naming common wild plants. We went for a walk around the school to try and find the wild plants we had been shown. From this, we worked with a partner to find the plants and then made a tally of how many we saw. At the end of the lesson, we looked at our tally charts to see which plant was the most common in our school.

# Class News

## *Year Two*

This week in year 2, we have completed the poem in English, 'If I were in charge at home.' The children came up with all the things that they didn't want to do or change e.g. make their beds, have pancakes with maple syrup every day. In Maths, the children continued looking at a range of measurements. This week they looked at temperature (degrees), they looked at a range of thermometers and identified the temperature or compared temperatures. In foundation, the children continued to investigate the Great Fire of London and comparing how people lived today and back in 1666.

## *Year Three*

This week in year 3 we have thoroughly enjoyed exploring the growths of plants. Pupils beans and sunflowers have started to grow and we had a chance to water them, measure their growth and examine the roots up close in the soil. Similarly, in English this week, pupils have enjoyed exploring and describing the movement of tectonic plates during an earthquake . We explored the various layers of the earth using verbs, personification and used videos to inform our research on the effect of earthquakes.

In maths, we are continuing to study fractions, specifically adding and subtracting fractions. We focused on when the denominator is the same, how only the numerator is affected by the operation. We also revised equivalent fractions and the relationship using multiplication and division. Additionally, in French, we revised the days of the week, members of our family (with descriptions) and learned how to say the alphabet. Pupils enjoyed saying the alphabet aloud and spelt their name in French.

In the build up to sports day, pupils have started athletics, this will occur weekly on a Tuesday morning in addition to their usual PE slot(3VP and 3SA on Thursday) (3ML and 3SG on Friday).

As always , we encourage pupils to try to access the home learning platforms such as TTRS, MyMaths ( when work is set, Google classrooms to revise spellings or Active learn), and Bug Club for online reading books. Login details are located at the front of their reading records, alternatively pupils can get a physical reading book from their bookcases in class; any queries please feel free to speak to any member of the Year 3 team. Pupils should have a bug club banded book and a reading for pleasure book. We wish you all a wonderful weekend.

# Class News



*Year Four*

## **Mastering Maths:**

Pupils have been exploring contextual decimal numbers by looking at money. We have been converting between pounds and pence, as well as looking at worded problems.

**Enjoyable English:** Using the original story of Aladdin, pupils have been constructing sentences in preparation for writing their own version. Children are preparing to create their own version with a twist: the main characters, magical item, location and magical being have all been changed to suit their individual stories!

**Proactive PE — Athletics & Cricket:** During our PE lessons, we have been working on various athletics and cricket skills. Luckily for Year Four, we have been able to go out to athletics as a whole year group taking part in many different activities such as: sprints, relays, javelin, standing long jump, nerf rocket throwing, and shuttle runs. Within our own classes, we have been completing our cricket lessons by focussing on catching and throwing to start with, and then moving onto fielding and bowling; some of the children even had the opportunity to show off their batting skills in defensive cricket drills.

**Fabulous Foundation:** Our afternoons have been full of creativity as well as sports. We have been working on creating our own pages of an Ancient Egyptian scroll in Art; we started by tea/coffee staining their books to then add drawings to them. In History, we have been looking at key events within the Ancient Egyptian timeline.

Have an amazing weekend!

Year 4 Team

## *Year Five*

This week in year five, we began our narrative writing based around 'The Present', where we have focused in on detailed description and cohesion. We are all looking forward to the final drafts of our amazing writing! During history, we explored trench warfare and how a stalemate was formed. We investigated the impact on soldiers and how they suffered during this horrific time. In art, we took areas from our observational drawings and added watercolour paint, to make an abstract piece of artwork. In computing, we completed more vector art, with this week's focus being based around layering and adding fine detail.



# Class News

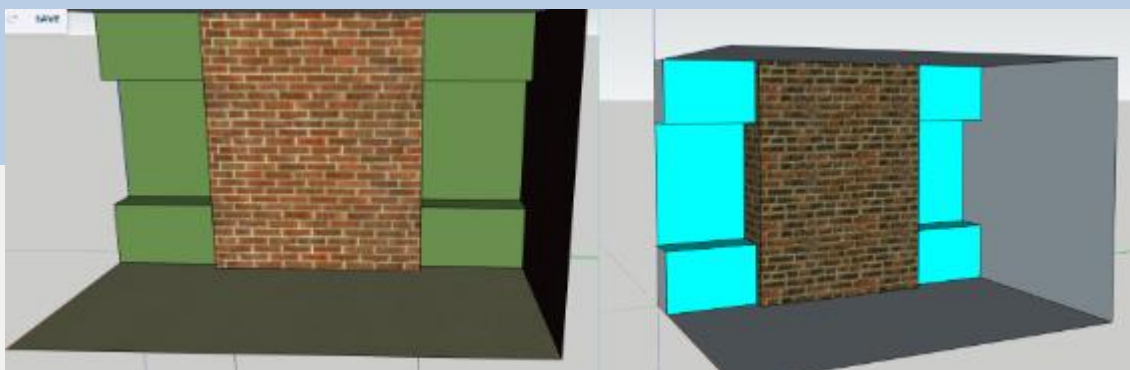
## *Year Six*

The countdown to SATs is on. Remember, you are invited to SATs breakfast during SATs week from 8:00am, come and join us for a Y6 get-together, cereals, bagels, and juice. Though the children have continued to work extremely hard on SATs preparation and revision, they have had some fun in their foundation lessons too...

In science, we continued to learn how adaptation leads to evolution, with a focus on 'survival of the fittest'. This week, the children played a board game, in which they were rabbits with different characteristics that may aid or hinder their survival. Throughout the game, the children picked up cards which revealed dangers or competition they may face. Only the rabbits that were best adapted to these situations survived to reach the finish line.

In history, we have been learning about our local history and specifically Bata. This week we compared maps of East Tilbury to see how the area has changed over time.

In computing, we have been using a programme called Sketchup to create 3D designs of rooms and houses. The children have been great at using this complicated programme and have developed some amazing designs.





# Reach for the Stars



Our 'Stars of the Week' are the children that have gone over and above in their efforts. We are very proud of them for their achievements and thought they deserved an extra-special mention!

RJG	Constantin	For being a kind and thoughtful friend.
REC	Poppy R	For her hard work during Phonics.
RES	Audrey	For her excellent effort in English this week.
1GC	Harper	For being a kind friend, working hard and always being helpful!
1FK	Jack-Junior	For having an amazing first week at East Tilbury Primary School.
1BA	Toby	For his amazing effort in maths this week.
2BG	Emma	For her amazing effort in English.
2RS	Bailey	For her amazing effort in English this week.
2CH	Vinnie	For his improved attitude towards his learning.
2RM	Steve	For his amazing effort in maths this week.
3VP	Praise A	For having a great first week at East Tilbury Primary School.
3ML	Myllen E	For making significant progress in her handwriting and presentation.
3SG	Alice C	For her effort in improving her times tables skills by using TTRockstars.
3SA	Hannah VZ	For helping and taking responsibility in the class.
4CP	Orla O	For demonstrating creativity across the curriculum.
4NM	David	For his positive commitment to all areas of learning.
4JP	Nevaeh	For using a range of features in her story writing.
5AB	Jessica F	For producing a great start to her narrative.
5TH	Hanan H	For engaging more with work in class.
5MR	Ronnie D	For showing solidarity and determination by performing a play to his class.
6LC	Keira G	For always having a great attitude to learning and being a positive role model.
6NB	Davina G-O	For her outstanding effort in her SketchUp project.
6JM	Atika J	For excellent effort and perseverance in maths.

# Keep in Touch



Our school office is open to receive calls between 8:30am and 3pm.

Tel: 01375 846181  
Email: [office.etp@osborn.e.coop](mailto:office.etp@osborn.e.coop)

East Tilbury Primary School  
Princess Margaret Road  
East Tilbury, Essex, RM18 8SB



We are also regularly updating our Facebook page and Twitter feed. Log on and have a look!



Twitter:  
[@EastTPrimary](https://twitter.com/EastTPrimary)



At East Tilbury Primary School our Designated Safeguarding Leads (DSL) are:

- Mrs Bates
- Mrs Dawson

Due to the size of the school, we have the following designated staff who can deputise in the Headteacher's absence:

- Mr Gowland
- Mrs Jarvis
- Mrs Mylam
- Mrs Allen
- Mrs Sheridan

Pupils can contact any of our Safeguarding Team during the school day.

Worried about a child? You can phone or write to MASH about your concerns. Phone immediately if you believe it is urgent.

Thurrock MASH (Multi Agency Safeguarding hub), Civic Offices, New Road, Grays, Essex, RM17 6SL, Tel: 01375 652802.

Emergency Duty Team (for out of hours) 01375 372468. · Police Child Abuse Investigation Team 01277 266822 or call 999 if you are concerned a child needs immediate protection. · Childline 0800 11 11 [www.childline.org.uk](http://www.childline.org.uk) · NSPCC 0808 800 5000 [www.nspcc.org.uk](http://www.nspcc.org.uk); [www.facebook.com/nspcc](https://www.facebook.com/nspcc)



**Tues 14:00-16:00:** St. Mary's Church hall, St. Mary's Church, Dock Rd, Grays, RM17 6EX.

**Tues 11:00-13:00:** St. John the Baptist Church, Tilbury, Dock Road, Tilbury, RM18 7PP

**Weds 11:00-13:00:** Gateway People's Centre, High Street, Stanford Le Hope, Essex, SS17 0EY

**Weds 13:00 -14:30:** Sockets Heath Baptist Church, Premier Avenue, Grays, RM16 2SB

**Thurs 11:00-13:00:** St. Francis Centre, Somerset Rd, Linford, SS17 0QA

**Thurs 11:00-13:00:** All Saints Church of England, Foyle Drive, Sth Ockendon, RM15 5HF

**Fri 10:12:00:** St. Stephen's Church of England, London Rd, Purfleet, RM19 1QD

**Sat 09:30-11:30:** Emmanuel Church of England, Sleepers Farm Rd, Chadwell St. Mary, RM16 4TP

**Sat 10:00-12:00:** All Saints Church of England, Foyle Drive, Sth Ockendon, RM15 5HF

**Sat 10:00-12:00:** Christian Gates of Praise International Christian Centre, 79-83 London Rd, RM175YF



# What Parents & Educators Can Learn from the OFCOM MEDIA REPORT 2024

Each year, Ofcom - the UK's regulatory body for communications - produces an overview of children and parents' media experiences over the course of the previous year. At the time of writing, the latest of these reports, 'Children and parents: media use and attitudes 2024' has just been published, and we've plucked out some of its most thought-provoking findings regarding online safety.

## ONLINE LIVES



## SCREEN TIME

By children's age group, the percentage of parents who felt less able to manage their child's screentime were ...



## POPULAR PLATFORMS

Most used by children ...



## ONLINE GAMING

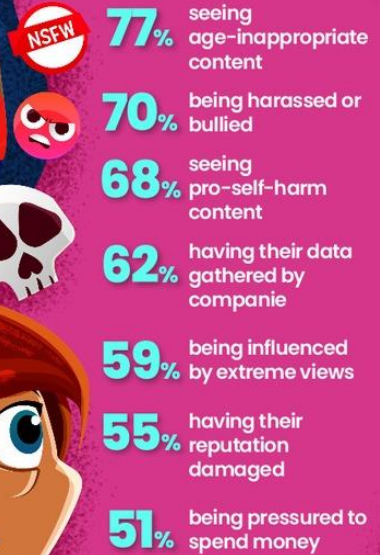
**68%** of children played video games online

Who did these children most commonly play with?



## PARENTAL CONCERNS

The things that most commonly worry parents and carers about their child being online include ...



## ONLINE SAFETY IN SCHOOLS

**93%** 8-17s had at least one lesson about online safety

**93%** of children are aware of at least one thing they can do to stay safe online

**91%** children found these lessons useful

**78%** of 8-17s were aware of age restrictions for apps

**40%** admitted to faking their age to bypass these limits

## DEVICES MOST USED TO GO ONLINE







#WakeUpWednesday

The National College



September 2023							October 2023							November 2023							December 2023						
M	T	W	T	F	S	S	M	T	W	T	F	S	S	M	T	W	T	F	S	S	M	T	W	T	F	S	S
				1	2	3						1				1	2	3	4	5					1	2	3
4	5	6	7	8	9	10	2	3	4	5	6	7	8	6	7	8	9	10	11	12	4	5	6	7	8	9	10
11	12	13	14	15	16	17	9	10	11	12	13	14	15	13	14	15	16	17	18	19	11	12	13	14	15	16	17
18	19	20	21	22	23	24	16	17	18	19	20	21	22	20	21	22	23	24	25	26	18	19	20	21	22	23	24
25	26	27	28	29	30		23	24	25	26	27	28	29	27	28	29	30			25	26	27	28	29	30	31	
							30	31																			
January 2024							February 2024							March 2024							April 2024						
M	T	W	T	F	S	S	M	T	W	T	F	S	S	M	T	W	T	F	S	S	M	T	W	T	F	S	S
1	2	3	4	5	6	7				1	2	3	4					1	2	3	1	2	3	4	5	6	7
8	9	10	11	12	13	14	5	6	7	8	9	10	11	4	5	6	7	8	9	10	8	9	10	11	12	13	14
15	16	17	18	19	20	21	12	13	14	15	16	17	18	11	12	13	14	15	16	17	15	16	17	18	19	20	21
22	23	24	25	26	27	28	19	20	21	22	23	24	25	18	19	20	21	22	23	24	22	23	24	25	26	27	28
29	30	31					26	27	28	29				25	26	27	28	29	30	31	29	30					
May 2024							June 2024							July 2024							August 2024						
M	T	W	T	F	S	S	M	T	W	T	F	S	S	M	T	W	T	F	S	S	M	T	W	T	F	S	S
		1	2	3	4	5					1	2		1	2	3	4	5	6	7				1	2	3	4
6	7	8	9	10	11	12	3	4	5	6	7	8	9	8	9	10	11	12	13	14	5	6	7	8	9	10	11
13	14	15	16	17	18	19	10	11	12	13	14	15	16	15	16	17	18	19	20	21	12	13	14	15	16	17	18
20	21	22	23	24	25	26	17	18	19	20	21	22	23	22	23	24	25	26	27	28	19	20	21	22	23	24	25
27	28	29	30	31			24	25	26	27	28	29	30	29	30	31				26	27	28	29	30	31		

<b>Autumn Term:</b>	Monday 4 September 2023 – Wednesday 20 December 2023 <i>Half Term 23 October – 3 November</i>	73 days
<b>Spring Term:</b>	Thursday 4 January 2024 – Thursday 28 March 2024 <i>Half Term 19 February - 23 February</i>	56 days
<b>Summer Term:</b>	Monday 15 April 2024 – Tuesday 23 July 2024 (22-23 July twilight inset payback) <i>Half Term 27 May – 31 May, and May Bank Holiday - 6 May</i>	66 days
		195 days

	School Holiday
	Additional autumn half term
	Inset days, schools closed to students
	Trust conference, schools closed to students