

School News

A MESSAGE FROM THE SENIOR LEADERSHIP TEAM

Dear Parents and Carers,

Enrichment Day

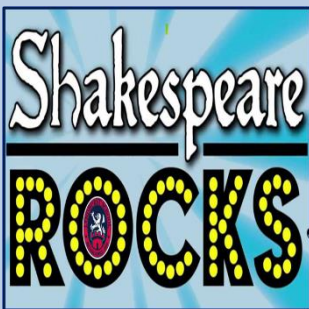
Today has been a fun-filled day of learning right across the school. Year groups have been delivering a curriculum enrichment day to inspire and engage pupils in creative tasks related to their learning. It was great to see so many Roman Soldiers and civilians in year 3! The children and staff have had a great day of learning together. Please do check out our Facebook page to see photos and information about the day.

PFA Volunteer readers

Over the last term our wonderful PFA team have been helping the school by hearing children read. This has been such a benefit to the children and as a school we wanted to express our thanks to the PFA for all the help and fundraising they do for the school! If you would like to support the school with additional reading support, please contact the school office.



Shakespeare Rocks



The children and staff in years 3/4/5 are so looking forward to their performances next week! They have been preparing all week with dress rehearsals in the hall – the singing and acting has been wonderful, and they are ready to perform to the school community next week.

Please remember that the children's last day of the term is Thursday 3rd April and they return to school on Tuesday 22nd April.

We wish you a relaxing weekend ahead.

The Leadership Team

Important Information

If your child has an injury and has been given medical advice that we need to follow as a school, please bring them to the school office for 8.15am on their first day back at school following the injury so that we can complete a risk assessment.

Thank you for your cooperation.

Absence

If your child is too ill to attend school, this must be reported to us by no later than **9.00am**. Please telephone the school, press one and leave a message on the voicemail box stating your child's full name, class, the reason for absence and when we can expect them to return to school (if known).

Home Visits will be carried out for any child that is absent for 3 or more school days without reason.

We need you...



Please label all children's school uniform. This helps us return lost property to the correct child and prevents parents from having to replace missing uniform as often. This is particularly important as the weather is colder and children are wearing jumpers/cardigans to school.

We are missing a significant number of reading books. If you have any left at home (whatever condition) from last academic year, please return them.
Thank you

**Please be reminded that pupils should not be wearing jewellery to school. Children with pierced ears may wear small stud earrings but hoops are not permitted.
Thank you for your support**

Please ensure your child has a PE kit in school each day. If you are struggling with this, please contact Mrs Jarvis or Mrs Allen.

Thank You

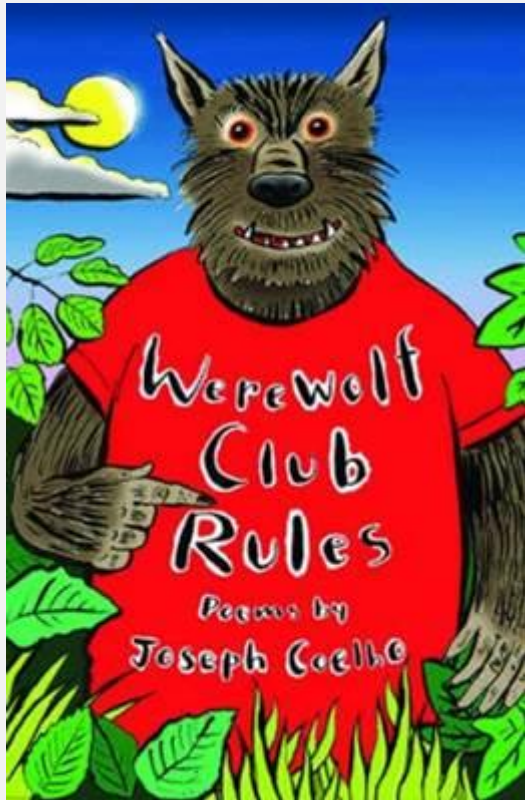
We are continually updating our OPAL resources and would gladly accept donations of:

- Tennis balls
- Footballs
- Bats
- Dressing up clothes
- Colouring books
- Crayons
- Big cars
- Lego



Recommended Reads

Each week we will be recommending great books that you can share with your children.



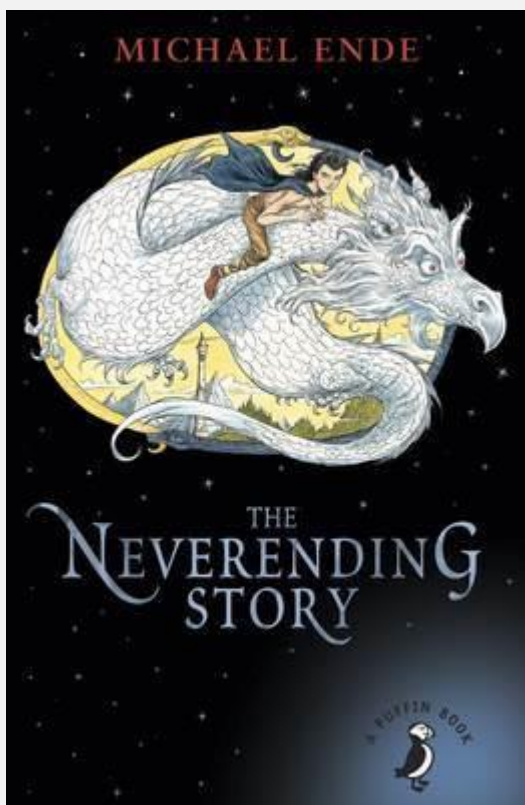
Werewolf Club Rules

Author: Joseph Coelho

Illustrator: John O'Leary

Publisher: Frances Lincoln

Why are there so few poetry books for primary-age readers? As Joseph Coelho's first collection shows, poetry is often far more accessible than novels, yet most publishers seem not to recognise its brief, pithy, sound-bite attraction. Coelho follows in a noble tradition headed by Agard, Ahlberg, McGough and Rosen, who turn everyday life into memorable poetic miniatures.



The Neverending Story

Author: Michael Ende

Publisher: Puffin

Bastian Balthazar Bux, a bookish and shy child who has recently lost his mother, bursts into an antique bookshop one day, having been chased by bullies. There, he meets a crotchety old bookseller and steals a mysterious leather-bound book, *The Neverending Story*.

Holed up in the school gym store cupboard, Bastian finds himself immersed in a fantasy world, Fantastica, where its ruler, The Childlike Empress, is suffering from a mystery illness. As Bastian reads on, he starts to realise that he too is entering the book, and when he realises that only he can save the Childlike Empress by giving her a new name, he becomes a character in it himself.



SEND in Focus

SEND & Pastoral Parent Coffee Meeting

Thursday 3rd April 2025
at 2pm

Do you have any questions or concerns about your child's special needs or emotional wellbeing?

Join us for a coffee and a chat. Mrs Mylam and Mrs Allen will be available to help with your individual enquiries.

Please come to the hub by the year 1 gate, opposite Little Angels Nursery.

We look forward to seeing you.





SEND in Focus

THURROCK SEND FAMILY FORUM

2025 SCHEDULE



Hello@thurrocksendfamilyforum.org

JANUARY	FEBRUARY	MARCH
Visually impaired Parental mental health	Epilepsy Eating Disorder	Neurodivergent & Downsyndrome event
APRIL	MAY	JUNE
Thurrock strategy launch Mutism & Stutters Health&Safety at work National pet month	Share your story Maternal mental health Deaf awareness Pathological Demand Avoidance (PDA)	Volunteers Carers week Rare chromosome & Gene disorder
JULY	AUGUST	SEPTEMBER
	Youth day Never give up day Summer event	Suicide Prevention Youth Mental Health
OCTOBER	NOVEMBER	DECEMBER
Black History Month ADHD Awareness Dyslexia	Men's Mental Health	Christmas event

Diary Dates

Tuesday 1st April 2025	Spring Production for Year 3,4 and 5 Cast A, approx. 9.15 – 10.15 Cast B approx. 1.45 – 2.45
Wednesday 2nd April 2025	Spring Production for Year 3,4 and 5 Cast B, approx. 9.15 – 10.15 Cast A approx. 1.45 – 2.45
Thursday 3rd April 2024	Last day of Term (Non-Uniform day)
Friday 4th April 2025	Non-Pupil Day
7th April 2025 – 18th April 2025	Easter Holidays
Monday 21st April 2025	Bank Holiday – no school for pupils
Tuesday 22nd April 2025	Pupils back to school (NO clubs this week)
Monday 5th May 2025	Bank Holiday – no school for pupils
Monday 12th May 2025- Thursday 15th May 2025	Year 6 SATS week
Friday 23rd May 2025	Last day of Term (Non-Uniform Day)
Monday 26th May 2025-Friday 30th May 2025	Half Term
Monday 2nd June 2025	Pupils back to school (Clubs are ON this week)
Friday 18th July 2025	Last day of the academic year for pupils (Non-Uniform day)
Monday 21st and Tuesday 22nd July 2025	INSET Days (no school for pupils)

Do you need support?

East Tilbury Primary Schools Online Pastoral Support.

We are very excited to launch our new Pastoral service to our school community. From today you can access support by completing a simple and quick online form.

We have been working hard over the last few months to set up extra support for our families which is very much needed at this challenging time. If you require support, then please do not hesitate to reach out. We are hoping this service will be a fantastic addition to the support we can provide for our school community. Please reach out if you need anything, we are always here to offer you support.

To make the process simple we have created a QR Code (at the top of the poster) which you can just scan, and this will take you directly to the form.

WE CAN HELP WITH

- Food
- School Uniform
- Hygiene Products
- Wellbeing

FOR MORE INFORMATION VISIT:

www.easttilburyprimary.thurrock.sch.uk



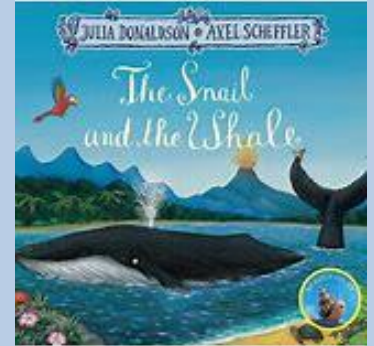
Class News

Reception

This week in Reception we have focussed our learning on the book 'The Snail and the Whale' by Julia Donaldson. We have been writing our own postcards back to our family as if we are the snail and the whale and describing what we have been up to on our adventures. We have learnt about Antarctica and what it would be like there and Grandma Fantastic gave us lots of ideas for new adjectives.

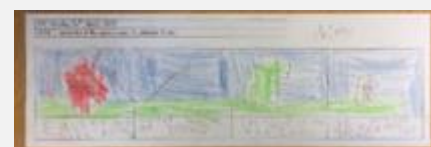
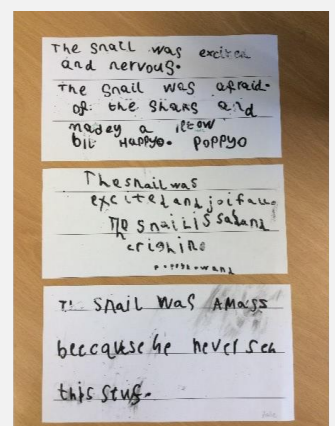
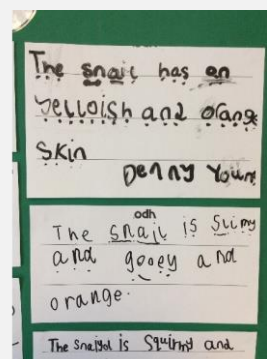
We worked as a team to create our own volcanoes throughout the week using newspaper and glue and then painting them after. We are excited to try and create our own volcanic eruption next week too!

For our Curriculum day we talked about different types of boats before designing and evaluating our own boats.



Year One

This week in English we have been using adjectives to describe characters from 'The Snail and the Whale'. We have thought about how the characters look and their emotions throughout the story. In R.E. this week we looked at the Easter story and considered what symbols and actions Christians use to help them celebrate and remember what happened to Jesus. We looked at artefacts including palm branches, hot cross buns and Easter eggs and considered their significance before drawing our own representations.



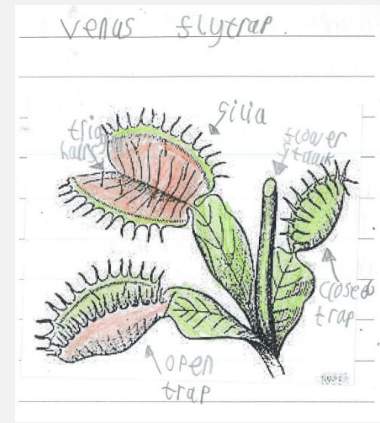
Class News

Year Two

This week in year 2 we have been putting the finishing touches on our own books about the Venus Flytrap. The teachers are so pleased of the incredible amount of hard work and effort that the children have put in. The children are so proud of their final pieces of writing.

In maths, we have been looking at directional language: clockwise, anticlockwise, half turn, quarter turn, whole turn. The children have been applying this language to context by giving their partners clear instructions to follow within the classroom. Next, we applied this language use to navigate across a map.

As part of our Enrichment Day learning, we created Moving monsters! The children had to design and make a monster with a moving mechanism, thinking carefully about levers and pulleys.



The fierce, mysterious, venus flytrap.

Did you know the venus flytrap mostly lives in north and south carolina in America.

The venus flytrap is a carnivorous plant this means it only eats meat.

and huge.
mysterious. Attacks
The venus flytrap use feeling to know there is a fly. Also if it touches two trigger hairs to detect if there is a fly there. the venus flytrap mostly live in swamps.

Year Three

This week in Year 3, we have been busy rehearsing for *Shakespeare Rocks!* The children are full of excitement as they prepare to take the stage next week, and their hard work and enthusiasm are shining through in every practice.

In Maths, we have been exploring equivalent fractions, using fraction walls to help us compare and find equal parts.

In DT, we have been learning all about electricity—eventually, we will be designing and making our own torches! In our most recent lesson, the children had great fun creating circuits using wires, batteries, and bulbs. It's been a fantastic week of learning, and we can't wait for our big performance!

Class News

Year Four

Year Four have had another busy week building up to the Easter holidays. In English we have been editing our version of the Iron Man story, ensuring that they had built suspense through action and advancing the scenes through that. In Maths, we have been looking at multiplying and dividing numbers by 10 and 100. Pupils have been exploring links between 10 and 100 and have used various strategies to figure out answers – they have even divided and multiplied using decimal numbers! In preparation for our Spring Production next week, pupils have taken part in multiple rehearsals and cast A have performed to Reception and Year One this afternoon.

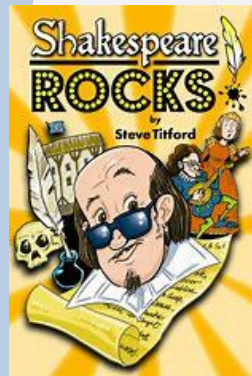
Year Five

It has certainly been an exhausting week for Year 5, as we have immersed ourselves in our final week of rehearsals for "Shakespeare Rocks." The pupils have been diligently practising their lines, songs, and dances. Such a creative endeavour not only bolstered their confidence but also encouraged teamwork and collaboration among peers. We are all excited and can't wait to showcase the outcome of our hard work next week!

In Maths, we began an exciting unit on translation, skilfully exploring coordinates on both 10 by 10 grids and grids featuring four quadrants.

In English, we initiated a poetry unit inspired by 'The River' by Valerie Bloom, which sparked vibrant discussions and creative thinking. Meanwhile, in PE, we embraced the dry weather with cricket practice allowing the children to release some steam while enhancing their skills.

Our geography lessons took us all the way to Australia, where we delved into the significance of the Great Barrier Reef, furthering our understanding of critical environmental issues. To end the week, we enjoyed a curriculum morning at Gobions Park, highlighting the pressing issue of littering in our environment. It has indeed been a week full of learning and growth for everyone!

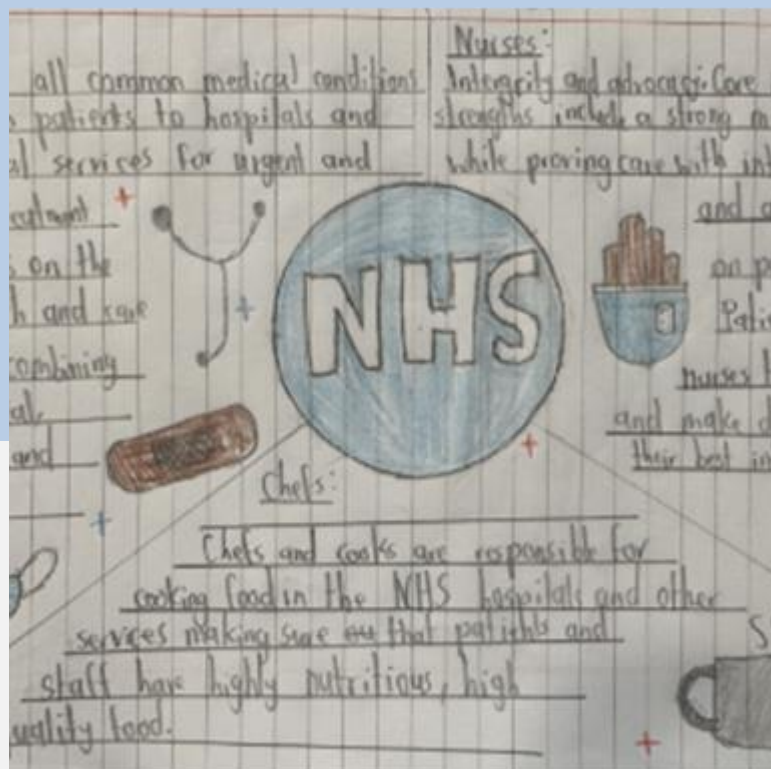


Class News

Year Six

This week in Year 6, we have delved further into our Aspirations Half-Term and presented creative ideas around the NHS, focusing on the job opportunities and services they provide. Pupils could convey this message in a way that they deemed most appropriate, which this newsletter is devoted to. Below is a poem from a pupil, with a poster from another pupil also shown below:

The NHS has many patients,
And those who work for them are from many nations,
Black or white: you will still get treated right,
Looked after when your health takes a plight.
Any time you get harmed,
The NHS is there married,
Please remember they don't have family time,
But they will always be there to fix your crime.





Reach for the Stars



Our 'Stars of the Week' are the children that have gone over and above in their efforts. We are very proud of them for their achievements and thought they deserved an extra-special mention!

RBG	Kenzie	For using his phonics in his writing.
RES	Avery	For working really hard on his phonics.
RFK	Tommy	For using and applying his sounds in his writing with resilience and enthusiasm.
1BA	George	For his great effort towards his learning.
1EC	Anne-Maire	For working hard in phonics and with her reading.
1LD	Denny	For being enthusiastic and always trying her best.
2RM	Annie	For her hard work with her writing about Venus Flytraps.
2CH	Cooper	For his positive attitude towards his learning in English this week.
2MF	Eshal	For hard work making a book on Venus flytraps in English.
2BG	Zahnah	For using all the features in her fact file about a Venus Fly trap.
3ML	Oyindola	For his focus and participation in class discussions.
3RS	Tommy	For his effort during maths lessons this week.
3SG	Violet-Berry	For being curious and enthusiastic during our Aspirations Month lessons.
3VP	Alfie B	For his increased effort and independence in class.
4CP	Charlie M	For amazing singing during the Spring Production rehearsals.
4KC	Bailee	For showing great focus and always putting in her best effort during lessons.
4MR	Stanley H	For always trying his best, helping others and being a positive role model.
5NM	Inaaya	For a beautifully composed poem.
5SA	Rebecca	For always making positive choices in class.
5TH	Martin	For dealing with problems in a mature way.
6AB	Lacie	For creating an amazing poster for the NHS.
6LC	Evie R	For her positive attitude to learning and working hard in all areas of the curriculum.
6NB	George M	For his outstanding NHS aspiration poem.



Maths Marvels



All pupils at East Tilbury Primary have logins for Times Tables Rockstars and are able to log on at home to practice their times tables.



What Parents & Educators Need to Know about BLUESKY SOCIAL APP

AGE RESTRICTION
13+

With an App Store rating of 17+ & Google Play rating Mature

WHAT ARE THE RISKS?

While Bluesky has been around since 2019, it's suddenly taken off in a big way thanks to a significant exodus from X (formerly Twitter). Indeed, it looks and behaves a lot like Twitter before Elon Musk bought the platform. Bluesky has been touted in recent months as a safer, more open-minded alternative to X – but like any social media site, it still has its share of risks.

NO PRIVATE ACCOUNTS

While most social networks allow accounts to be private, at the time of writing, all Bluesky accounts must be public. The development team has indicated this might change in the future, but the app is built on a public-first protocol. If private accounts are ever introduced, it may only be in a limited way – such as through the implementation of group chats.

INTERACTIONS WITH STRANGERS

Every account being public means that anyone can be contacted by anyone else. While users don't have to respond and can easily block people and move on, it does mean that youngsters are at particular risk of being conned by scammers, messaged by predatory adults or exposed to others with ill intentions. These hazards can be compounded by the fact that Bluesky doesn't require its users to provide their real name.

TROLLING AND BULLYING

While Bluesky currently feels a lot friendlier than X seems to have become, its lack of private accounts means that there's nothing to stop users from trolling and cyberbullying younger people. While accounts can be blocked and reported, a persistent bully could simply create a new profile, potentially making their victims feel unsafe in continuing to use the app.

DANGEROUS MISINFORMATION

Established news organisations have fact-checking and editing processes, but social networks have no such controls and can often serve as breeding grounds for misinformation and disinformation. Bluesky will possibly be no different once it reaches a certain size, and children may not have the critical thinking skills to tell fact from fiction – or to discern an informative, honest user from a malicious one.

ADULT TARGET AUDIENCE

Bluesky isn't designed with children in mind, and there aren't many parental controls on the platform. In an interview with the BBC, Bluesky's CEO originally said that the app would only allow users aged 18 and above to sign up, but a spokesperson later clarified its age restriction as 13+. This could imply the app was originally meant for an adult audience and suggests that making the platform more child-friendly might not currently be a priority.

RAPID GROWTH

At the time of writing, Bluesky seems calm in comparison with other social networks where moderation is lax and the atmosphere toxic – but that's due at least in part to its smaller community. The app has recently been adding as many as a million users per day, and if that continues, there'll be more unpleasant users to handle, and moderators could struggle to maintain the pleasant environment Bluesky is currently known for.

Advice for Parents & Educators

USE THE ADULT CONTENT FILTER

Bluesky doesn't have much in the way of parental controls, but there are content filters which can hide sexual and graphic imagery. These are enabled by default for underage accounts but can be manually turned on in the 'Moderation' section of the app's settings. The 'advanced' Bluesky Moderation Service lets you restrict content even further, hiding – for example – self-harm content, extremist rhetoric, and even rude posts.



LOOK OUT FOR FAKES

Impersonation is a problem on all social networks. While the consequences are usually benign, imposters sometimes attempt to scam or groom children by pretending to be a popular influencer or online personality. Bluesky is unique in that it can be connected to official domains, with users' handles linking to other sites; while this isn't widely used right now, it could be a reliable way to verify celebrities and public figures in future.



ENCOURAGE BLOCKING AND REPORTING

Another tool that Bluesky uses to ensure a decent experience is muting and blocking accounts. The former prevents you from seeing a specific user's content, while the latter stops them from seeing yours. If a child is encountering trolls or bullies on the platform, encourage them to use this function, while also reporting the offenders to help make the platform a nicer place for everyone.



KEEP AN OPEN DIALOGUE

As with all social media platforms, moderation and content filters can only do so much; it's highly likely that a child will eventually face something unsavoury. For that reason, it's important to make sure that young people are aware of the risks and know how to handle the technology if anything they see on the app makes them feel unsafe or uncomfortable.



Meet Our Expert

Alan Martin is an experienced technology journalist who has written for the likes of Wired, TechRadar, Tom's Guide, The Evening Standard, The Guardian and The New Statesman.



The National College

Source: See full reference list on guide page at: <https://nationalcollege.com/guides/bluesky-app>

What Parents & Educators Need to Know about STREAMERS

Livestreaming has become a big part of the entertainment people consume, and what began as a series of gamers sharing their screens has grown into a huge industry packed with personalities - and potential risks for your children. With over 2.5 million people watching Twitch, the most popular streaming service, at any one time, it's important to remain aware of the risks associated with streamers.

WHAT ARE THE RISKS?

INAPPROPRIATE CONTENT



Some gaming streamers will stick to family-friendly titles, but others will play more violent games that tend to be more popular. Non-gaming streamers could, in theory, discuss just about anything, and some streamers will often stream in revealing outfits.

NEGATIVE INFLUENCES



While things have improved, streamers are often paid by companies to promote products, and this isn't always stated explicitly. While it's unlikely these goods will be harmful to your child, some streamers and influencers have engaged (knowingly or not) in scams in the past.

FINANCIAL HARM



Streamers will often have donation buttons on their screens for users to submit money. What can start as small amounts can quickly spiral as streamers engage with paying viewers more often, potentially leading to financial issues.

UNREALISTIC EXPECTATIONS



Influencers often showcase how glamorous their lives are, making some users feel as though they are lesser. However, it's important to stress that, in many ways, this is an act, or at the very least, not common. Logan Paul, who has been successful as a streamer and influencer, has a Pokemon card worth \$5 million, but this is atypical of anyone working in the medium.

MISINFORMATION



Streamers are, in many ways, just like us - and they can get things wrong or reel off an opinion without having thought about it. Some can simply say awful things to get a rise out of viewers or to sway them to their side of a hot topic.

ADDICTION AND SCREEN TIME



If your child is watching a lot of a particular streamer, it can be just as damaging to their social life as playing too many video games.

Advice for Parents & Educators

EXPLAIN HOW STREAMING WORKS



For a younger viewer, being a streamer or influencer seems aspirational, but it involves a lot of work and no small degree of good fortune. Streamers are often managed and unable to speak freely due to sponsors, and influencers are just that - influencing young minds, for better or for worse.

DO NOT LOG PAYMENT INFORMATION



Streamers can reward donations with additional content, on-camera "shout outs" and more. If you're unsure about who or what your child is watching, consider avoiding linking payment information. This is especially notable with Twitch, which is owned by Amazon and therefore has some crossover.

CHECK OUT STREAMING PLATFORMS



While Twitch was the de facto streaming service for years, YouTube has gained popularity, too. Then there are Kick and Rumble, which have grown in popularity with moves for big-name streamers - despite many being dogged by controversy.

SET SCREEN TIME LIMITS



You can set screentime limits for mobile apps on iOS and Google, but with other platforms like a PC it may be more difficult to keep tabs. Consider checking in regularly to ensure your children aren't watching content they shouldn't be.

Meet Our Expert

Lloyd Coombes is the Games Editor of the Daily Star, and has been working in the gaming and tech industry for five years. A regular visitor to the App Store to try out new tools, he's also a parent and therefore understands the importance of online safety. He's also a tech and fitness writer and has been published at sites including IGN, TechRadar, and plenty more.



The National College®



Thurrock
Teacher Training

Get into Teaching

St Clare's School

Lead ITT provider in partnership with Tes institute are pleased to announce that trainee places are available for the academic year 2025/2026.

*'Our trainees success rate
Securing QTS = 100%
Employed = 100%'*



Our partner schools for
2025/2026 include:

Primary

Chadwell St. Mary, Deneholm, East Tilbury, Thameside, Stifford Clays, Horndon-on-the-hill, Stanford-le-Hope, Doddinghurst, Little Thurrock, Arthur Bugler, Warren Primary, Bonnygate Primary, Woodside Academy

Secondary

Grays Convent, Marshalls Park, Ormiston Park Academy, St. Clare's School, William Edwards The Gateway Academy, Brentwood County High, Hathaway Academy, Orsett Heath Academy

"The Tes Institute course was brilliant, and I would recommend it to others who are thinking of entering a career in teaching"
- 2024 Trainee

For all enquiries please contact:
thurrockteachertraining@osborne.coop

Keep in Touch



Our school office is open to receive calls between 8:30am and 3pm.

Tel: 01375 846181

Email: office.etp@osborne.coop

East Tilbury Primary School

Princess Margaret Road
East Tilbury, Essex, RM18 8SB



We are also regularly updating our Facebook page and Twitter feed. Log on and have a look!



Twitter:
[@EastTPrimary](https://twitter.com/EastTPrimary)



At East Tilbury Primary School our Designated Safeguarding Leads (DSL) are:

- Mrs Dawson

Due to the size of the school, we have the following designated staff who can deputise in the Headteacher's absence:

- Mr Gowland
- Mrs Jarvis
- Mrs Mylam
- Mrs Allen
- Mrs Sheridan

Pupils can contact any of our Safeguarding Team during the school day.

Worried about a child? You can phone or write to MASH about your concerns. Phone immediately if you believe it is urgent.

Thurrock MASH (Multi Agency Safeguarding hub), Civic Offices, New Road, Grays, Essex, RM17 6SL, Tel: 01375 652802. Emergency Duty Team (for out of hours) 01375 372468. · Police Child Abuse Investigation Team 01277 266822 or call 999 if you are concerned a child needs immediate protection. · Childline 0800 11 11 www.childline.org.uk · NSPCC 0808 800 5000 www.nspcc.org.uk; www.facebook.com/nspcc



Tues 14:00-16:00: St. Mary's Church hall, St. Mary's Church, Dock Rd, Grays, RM17 6EX.

Tues 11:00-13:00: St. John the Baptist Church, Tilbury, Dock Road, Tilbury, RM18 7PP

Weds 11:00-13:00: Gateway People's Centre, High Street, Stanford Le Hope, Essex, SS17 0EY

Weds 13:00 -14:30: Sockets Heath Baptist Church, Premier Avenue, Grays, RM16 2SB

Thurs 11:00-13:00: St. Francis Centre, Somerset Rd, Linford, SS17 0QA

Thurs 11:00-13:00: All Saints Church of England, Foyle Drive, Sth Ockendon, RM15 5HF

Fri 10:12:00: St. Stephen's Church of England, London Rd, Purfleet, RM19 1QD

Sat 09:30-11:30: Emmanuel Church of England, Sleepers Farm Rd, Chadwell St. Mary, RM16 4TP

Sat 10:00-12:00: All Saints Church of England, Foyle Drive, Sth Ockendon, RM15 5HF

Sat 10:00-12:00: Christian Gates of Praise International Christian Centre, 79-83 London Rd, RM175YF

September 2024							October 2024							November 2024							December 2024						
M	T	W	T	F	S	S	M	T	W	T	F	S	S	M	T	W	T	F	S	S	M	T	W	T	F	S	S
						1		1	2	3	4	5	6					1	2	3							1
2	3	4	5	6	7	8	7	8	9	10	11	12	13	4	5	6	7	8	9	10	2	3	4	5	6	7	8
9	10	11	12	13	14	15	14	15	16	17	18	19	20	11	12	13	14	15	16	17	9	10	11	12	13	14	15
16	17	18	19	20	21	22	21	22	23	24	25	26	27	18	19	20	21	22	23	24	16	17	18	19	20	21	22
23	24	25	26	27	28	29	28	29	30	31				25	26	27	28	29	30		23	24	25	26	27	28	29
30																					30	31					
January 2025							February 2025							March 2025							April 2025						
M	T	W	T	F	S	S	M	T	W	T	F	S	S	M	T	W	T	F	S	S	M	T	W	T	F	S	S
		1	2	3	4	5						1	2						1	2		1	2	3	4	5	6
6	7	8	9	10	11	12	3	4	5	6	7	8	9	3	4	5	6	7	8	9	7	8	9	10	11	12	13
13	14	15	16	17	18	19	10	11	12	13	14	15	16	10	11	12	13	14	15	16	14	15	16	17	18	19	20
20	21	22	23	24	25	26	17	18	19	20	21	22	23	17	18	19	20	21	22	23	21	22	23	24	25	26	27
27	28	29	30	31			24	25	26	27	28			24	25	26	27	28	29	30	28	29	30				
														31													
May 2025							June 2025							July 2025							August 2025						
M	T	W	T	F	S	S	M	T	W	T	F	S	S	M	T	W	T	F	S	S	M	T	W	T	F	S	S
			1	2	3	4						1			1	2	3	4	5	6					1	2	3
5	6	7	8	9	10	11	2	3	4	5	6	7	8	7	8	9	10	11	12	13	4	5	6	7	8	9	10
12	13	14	15	16	17	18	9	10	11	12	13	14	15	14	15	16	17	18	19	20	11	12	13	14	15	16	17
19	20	21	22	23	24	25	16	17	18	19	20	21	22	21	22	23	24	25	26	27	18	19	20	21	22	23	24
26	27	28	29	30	31		23	24	25	26	27	28	29	28	29	30	31				25	26	27	28	29	30	31
							30																				

	School Holiday
	Additional autumn half term (some Thurrock schools only)
	Inset days, schools closed to students
	Trust conference, schools closed to students
	Bank Holidays