



Newsletter

26th May 2023

Dear Parents and Carers,

Doesn't time fly when you're having fun! We can't believe that this half term has come to an end. The children have had an exciting week of learning and we continue to be impressed by their creativity and determination to learn.

Success! Platinum Artsmark award

Pupils and staff at East Tilbury Primary are celebrating after receiving a prestigious Artsmark Award in a momentous year for the programme as it celebrates 20 years of arts,

culture and creativity in schools. The Artsmark Award is the only creative quality standard for schools, accredited by Arts Council England. It supports schools to develop and celebrate arts and cultural education, putting creativity and wellbeing at the heart of the curriculum. Artsmark ensures every young person can be creative and access a diverse, high-quality cultural education. Dr Darren Henley CBE, Chief Executive of the Arts Council, said:

"I would like to congratulate East Tilbury Primary on their Artsmark Award. Becoming an Artsmark school demonstrates that through offering a broad, ambitious, and creative curriculum, every pupil can develop character and resilience, increasing their knowledge, curiosity and skills that will remain with them through to adult life."



**Artsmark
Platinum Award**
Awarded by Arts
Council England

We hope that you have a relaxing half-term break and we look forward to seeing the children again on Monday 5th June.

PE KIT

For PE this term all lessons will be athletics and a Striking and fielding (cricket or rounders).

Could all children please have a PE kit in school

everyday. If you are unable to provide your child with a PE kit please use our uniform shop as we will donate them to any families that cannot provide a PE kit for their child. Please ensure the PE kit is labelled and is in a bag labelled with your child's name.

PE kit should include

- Plain white T-shirt
- Navy shorts
- Tracksuit (for outdoor sports in the winter)
- Trainers/plimsolls (children should not be wearing their school shoes for PE. This can be a health and safety issue and also brings mud from the school field into the classrooms).

Thank you

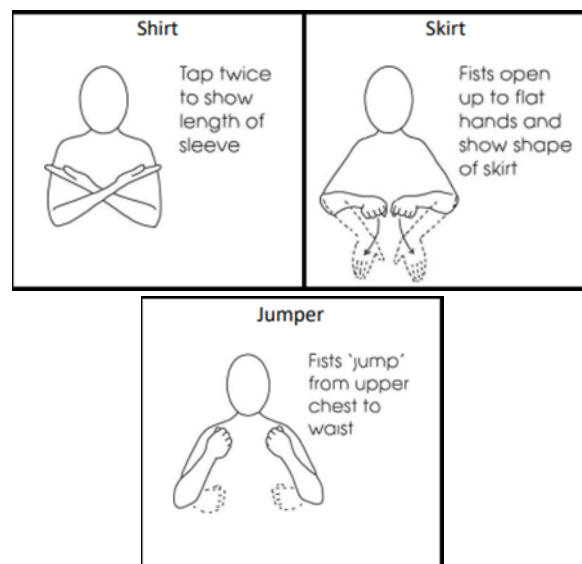


Well done to Oakley who has been awarded a Rising Star Award from the Local Authority. We are so proud of you for this brilliant achievement.



Makaton Signs of the Week:

We hope you managed to practise signing shoes, socks and trousers last week. How about having a go at other items of your school uniform.



Absence

If your child is too ill to attend school, this must be reported to us by no later than **9.00am**. Please Telephone the school, press one and leave a message on the voicemail box stating your child's full name, class, the reason for absence and when we can expect them to return to school (if known).

Home Visits will be carried out for any child that is absent for 3 or more school days without reason.





An Awareness Raising Session for Parents and Carers to Increase Knowledge of Gangs and Child Criminal Exploitation

**Wednesday 17th May 2023
Thursday 14th September 2023
Thursday 7th December 2023**

**18.00 till 19.00
Via MS Teams**

This session will identify the harms associated with gangs and county lines and will look on practical advice on how to support a young person who you may be concerned about in relation to Exploitation

To book your place visit www.thurrocklscp.org.uk

Walk Online Roadshow for Parents, Carers and Practitioners

**Tuesday 6th June 2023 -
20:00 - 21:30**



**THURROCK LOCAL
SAFEGUARDING
CHILDREN
PARTNERSHIP**

**Thurrock LSCP have offered the Walk
Online Roadshow for all Years 5, 6, 7 and 8.**

**We are pleased to be able to offer a
session for parents, carers and
practitioners.**

**This session explores how parents, carers
and practitioners can support their
children to navigate the online world.**

Visit the website to access the link

www.thurrocklscp.org.uk

POLITE NOTICE

At East Tilbury Primary we motivate the children to take an active role in being eco-friendly and as part of this, we encourage pupils to choose to walk, scoot and bike to school, to help lower carbon emissions from cars.



We ask parents/carers to encourage pupils to be safe and responsible when riding bikes and scooters. Children should take care when passing or approaching other children and should dismount their bike or scooter on entering the school grounds.

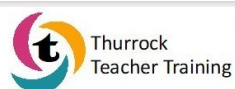
This is particularly important outside the Year 1 gate near to Little Angles as younger children walk up and down that pathway. Please avoid riding scooters/bikes in this area to help us keep everyone safe.

Thank You

PARKING

Could you please be vigilant and courteous if you bring your vehicle onto the school grounds and refrain from parking on any zig zag lines or on the zebra crossing.

The children's safety is of paramount importance.



Get into Teaching

St Clare's School

Lead ITT provider in the TTSA and in partnership with the TES institute are pleased to announce that trainee places are available for the academic year 2022/2023.

*'Our trainees success rate
Securing QTS = 100%
Employed = 100%'*



Our partner schools for 2022/2023 include:

Primary

Chadwell St. Mary, Deneholm, East Tilbury, Thameside, Stifford Clays, Horndon-on-the-hill, Stanford-le-Hope, Doddinghurst, Little Thurrock, Arthur Bugler, Warren Primary, Bonneygate, Woodside.

Secondary

Grays Convent, Marshall's Park, Ormiston Park Academy, St. Clare's School, William Edwards, The Gateway Academy, Brentwood County High, Hathaway Academy, Thames Park

'The Tes course was brilliant, and I would definitely recommend it to others who are thinking of entering a career in teaching.'

- 2022 Trainee

For all enquiries, please contact
thurrockteachertraining@osborne.coop

Are you a graduate? Have you thought about a career in teaching? East Tilbury Primary School are part of the Thurrock Teacher Training Partnership and we are looking for potential trainee teachers. Please contact Mrs Jarvis if you are interested or would like to know more.

Risk Assessments

If your child has an injury and has been given medical advice that we need to follow as a school, please bring them to the school office for 8.15am on their first day back at school following the injury so that we can complete a risk assessment.

Thank you for your cooperation.



26/5/23



**Artsmark
Platinum Award**
Awarded by Arts
Council England

East Tilbury Primary
School receives prestigious Artsmark Platinum Award

Pupils and staff at East Tilbury Primary are celebrating after receiving a prestigious Artsmark Award in a momentous year for the programme as it celebrates 20 years of arts, culture and creativity in schools.

The Artsmark Award is the only creative quality standard for schools, accredited by Arts Council England. It supports schools to develop and celebrate arts and cultural education, putting creativity and wellbeing at the heart of the curriculum. Artsmark ensures every young person can be creative and access a diverse, high-quality cultural education.

In order to achieve their Artsmark Award, East Tilbury Primary had to develop their arts and culture provision to embed a broad and ambitious curriculum. This was achieved by creating an overall plan that was committed to and delivered across the whole school.

East Tilbury Primary was supported by The Royal Opera House Bridge team in planning and developing their objectives. They worked alongside the school at various stages to support their Artsmark Award achievement.

The Artsmark assessor commended East Tilbury Primary: *'It is very clear that East Tilbury Primary School continues to value the Arts highly and contributes to the development of the Arts in the Osborne Cooperative Academy Trust. You set out to extend your reach and you are emerging into a leadership role very soundly built on the development of leadership within your school.'*

On receiving the award, Mr Gowland (Curriculum lead) said: "We're extremely proud of achieving our Artsmark Platinum Award. We are committed to delivering a high-quality arts and cultural education and we look forward to continue to grow with Artsmark."

Dr Darren Henley CBE, Chief Executive of the Arts Council, said:
"I would like to congratulate East Tilbury Primary on their Artsmark Award. Becoming an Artsmark school demonstrates that through offering a broad, ambitious, and creative curriculum, every pupil can develop character and resilience, increasing their knowledge, curiosity and skills that will remain with them through to adult life."

East Tilbury Primary School



Following the work done for us by Walsh to provide us with access to the wildlife area that is being developed next door to the school, we are planning to install an outdoor classroom and some storage at the back of the school field to enable us to deliver our Forest School curriculum and would like to ask for your support with this.

We need to raise £10,000 to finance the project and will be running some fundraising activities to enable us to go forward. The first activity will be a sponsored spell in which we will ask all children to learn a set of spellings- please look out for the sponsor forms coming soon.



Please look out for any further activities that we will be staging to help us to reach our target – we would like to start this approach as soon as possible.

Why is it beneficial for children to attend forest school?

The benefits of the forest school approach are linked to the long-term. It focuses on six guiding principles:

Physical, social, cognitive, linguistic, emotional, social and spiritual aspects

Case studies have shown children can:

- Develop self-regulation skills
- Cope with and learn from failure
- Build resilience
- Gain a sense of achievement
- Increase motivation and concentration
- Improve problem solving
- Expand their vocabulary and communication skills
- Feel empowered and have new perspectives
- Build positive relationships with adults and peers
- Have overall improved wellbeing and mental health

We as educators have a responsibility to develop our pupils' understanding of the world and community that they live in, including the natural world and caring for the planet. As a school we are surrounded by countryside, and it is our duty to ensure that the children are able to care for it and understand its importance to their future and the generations that follow.

The forest school approach aligns with our whole school nurture approach, Opal, Pivotal and Trauma Perspective Practice, working to develop young people who are able to regulate their emotions, understand the importance of good mental health and build positive, respectful relationships.

TARGET



£10,000



Do you need support?



East Tilbury Primary Schools Online Pastoral Support.

We are very excited to launch our new Pastoral service to our school community. From today you can access support by completing a simple and quick online form.

We have been working hard over the last few months to set up extra support for our families which is very much needed at this challenging time. If you require support, then please do not hesitate to reach out. We are hoping this service will be a fantastic addition to the support we can provide for our school community. Please reach out if you need anything, we are always here to offer you support.

To make the process simple we have created a QR Code (at the top of the poster) which you can just scan, and this will take you directly to the form.



WE CAN HELP WITH

- Food
- School Uniform
- Hygiene Products
- Wellbeing

FOR MORE INFORMATION VISIT:

www.easttilburyprimary.thurrock.sch.uk

Please find more information about this on our school website or Facebook Page.



FREE and subsidised school milk

Register your child today!



Cool Milk
www.coolmilk.com

Is your child entitled to FREE milk?

Child under 5?

Every child under the age of five is entitled to FREE school milk.

 Register your child online for FREE school milk today.

Child over 5?

Every child over the age of five is entitled to milk at a subsidised price of around £16 per term.

 Register online now and you can pay straight away!

Register your child for school milk today.

Sign them up in a few clicks...



Go online and quickly register your child for school milk at www.coolmilk.com



Need help? Contact our Customer Service team on 0800 321 3248 or via email at registrations@coolmilk.com

The UK government continues to support school milk. Milk for under-5s is fully funded by DHSC via the Nursery Milk Scheme. Milk for over-5s is subsidised by Defra via the School Milk Scheme. Consery/registration no. 3603230 England

Cool Milk
www.coolmilk.com

Important dates:

Monday 29th May 2023 —Friday 2nd June 2023	May Half Term
Monday 5th June 2023	Pupils return to school
Wednesday 7th June 2023	Parent/Carer Anxiety Gremlin workshop—session 3
Thursday 8th June 2023	School Photos (Class)
Friday 9th June 2023	Reception 2023 intake meeting—2pm
Wednesday 21st June 2023	Reception Sports Day 9.30am-10.30am
Friday 23rd June 2023	Years 1,2 and 3 Sports Day 9.30am-11am
Friday 23rd June 2023	Years 4,5 and 6 Sports Day 1.30pm-3pm
Thursday 29th June 2023	Kinetica T100 walk (year 5)
5th, 6th and 7th July 2023	St Clare's Transition Days
Monday 10th July 2023	Class Open event 3.20pm-5pm
Thursday 13th July 2023	Year 6 camping on the field
Friday 14th July 2023	Curriculum enrichment day
Friday 14th July 2023	Reports go out to parents
Monday 17th July 2023	Year 6 Bata Awards
Wednesday 19th July 2023	Year 6 leavers performance
Thursday 20th and Friday 21st July 2023	INSET days—school closed to pupils
Monday 24th July 2023	First day of summer holidays



How are you?

Sad? Stressed? Anxious?

Worried? Tearful? Overwhelmed?

Want help?



Your Mental Health First Aider is

Miss. Mills

Training provided by



There are plenty of different types of support out there, and a Mental Health First Aider can help you access the support you need to feel better.

Mental Health First Aiders are a point of contact if you, or someone you are concerned about, are experiencing a Mental Health issue or emotional distress. They are not therapists or psychiatrists but they can give you initial support and signpost you to appropriate help if required.

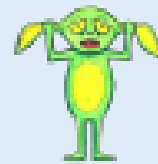
To arrange a meeting, please contact me via email: mhfa.etp@osborne.coop



School Wellbeing Service

Brighter Futures

Parent/Carer Anxiety Gremlin workshop



Session 1: Wednesday 17th May, 9am-10am

Session 2: Wednesday 24th May, 9am-10am

Session 3: Wednesday 7th June, 9am-10am

Starving the Anxiety Gremlin is a book by Kate Collins-Donnelly, a successful child therapist and psychologist. The book focuses on teaching children about the emotion called anxiety. It looks at what anxious thoughts they may have and how they might feel when they experience these. It also teaches them strategies to manage these anxious thoughts and feelings and hopefully, as a result, help them become more confident as they grow older. These parent/carers sessions are based on the theory from these books and will be referred to throughout.

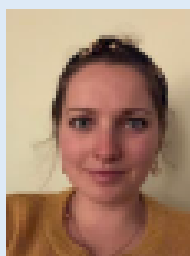
The sessions will give you a good understanding of anxiety through self-reflection, focussing on your own experiences, which will help you support your child at home with a wider understanding of their needs. The programme is split into three sessions:

Session 1: Understanding the theory of anxiety

Session 2: Parenting anxious behaviours

Session 3: Strategies to help manage anxiety

Meet the School Wellbeing Practitioners who will be attending:



Samantha Walsh
Senior Wellbeing Practitioner



School Wellbeing Service

Brighter Futures



Lisa Hyde
Wellbeing Practitioner

All sessions will be held in the school library. Please enter (9am) and exit via the Year 3 gate. We look forward to seeing you there.



Osborne
Co-operative Academy Trust

**SUPPORT, INSPIRE &
MAKE A DIFFERENCE!**

BECOME A SCHOOL GOVERNOR



We are always looking for people that want to make a real difference for children and young people in the community.

Is this you?


If it is then becoming a governor could be just the thing for you!

Scan the QR code below with your phone's camera to watch a short video about what it's like to be a school governor at an Osborne Trust School...



If you are interested and want to know more, please call or email us...

 **01375 648966**

 **info@osborne.coop**

Self-help / Self-responsibility / Democracy / Equality / Equity / Solidarity

GET CREATIVE
SATURDAY 📍



FREE CREATIVE WORKSHOPS

MINDFUL MONO-PRINTING WORKSHOP

9am - 11am @ the Thameside Complex Foyer

FAMILY CRAFTS WITH AMANDA

10am - 12pm @ Costa Coffee - Grays

STORYTELLING ACTIVITY

Grays Library, suitable for 0-6yrs
10:30am - 12:30pm @ Grays Central Library

DJ SKILLS WITH EAZEE LEARNING

* BOOKING REQUIRED * Email Arts Outburst to book a space!
11am - 1pm @ Eazee Learning's Studio

BOLLYWOOD DANCE WORKSHOP

12pm - 2pm @ Grays Town Park

WATERCOLOUR PAINTING WORKSHOP

* LIMITED NUMBERS*
12pm - 2pm @ the Lightship Cafe - Grays Beach

STREET DANCE WORKSHOP

1pm - 2pm @ Arts Outburst, Studio 3

#ROBGETCREATIVE

📍📧📱 *ArtsOutburst*

☎ 01375 386247 ✉ hello@artsoutburst.co.uk



Supported using public funding by
**ARTS COUNCIL
ENGLAND**

**CREATIVE
ESTUARY**



Funded by
UK Government

GET CREATIVE
SATURDAY 📍



FREE CREATIVE WORKSHOPS

SPOKEN WORD AND RAP WORKSHOP

1pm - 3pm @ the Thameside Complex Foyer
(14 years +)

DANCE MEETS VIRTUAL REALITY WORKSHOP

1:00pm - 2:45pm @ Arts Outburst, Studio 1

INTERACTIVE ART WORKSHOP

1:00pm - 3pm @ Riverside Community Hub
(13 years +)

MANDALA WORKSHOP

1:30pm - 3:30pm @ The Community House

FAMILY ZUMBA® SESSION

2pm - 2:45pm @ Arts Outburst, Studio 3
All ages, this can even be done from a chair!

DJ SKILLS WITH EAZEE LEARNING

* **BOOKING REQUIRED** * Email Arts Outburst to book a space!
2pm - 4pm @ Eazee Learning's Studio

SEA SHANTIES AHOY!

3pm - 4pm Lightship Cafe - Grays Beach

#AOBGETCREATIVE

📷📍📱 *ArtsOutburst*

☎ 01375 386247 ✉ hello@artsoutburst.co.uk



Supported using public funding by
**ARTS COUNCIL
ENGLAND**

**CREATIVE
ESTUARY**



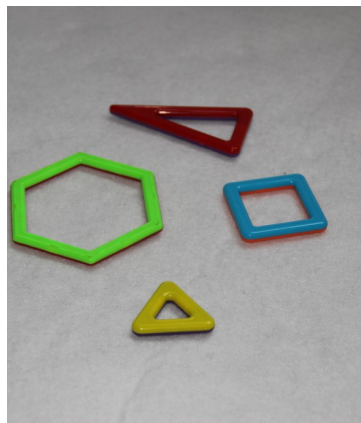
Funded by
UK Government

Reception

This week in Reception we have enjoyed reading the story Jack and the Beanstalk. We have enjoyed joining in with the repetitive parts. We have used our phonic skills to write expanded noun phrases such as- the golden, small, eggs, the red fluffy hen and the hard, old ,bed.

In maths this week we have been looking at shapes and how they can be manipulated. We noticed that two triangles make a square, we also learnt that there are different sorts of triangles. We explored a right angled triangles.

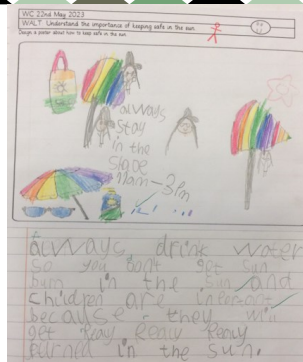
For topic this week we have planted runner beans, we are looking forward to watching them grow—we are hoping they will grow into a beanstalk. Some beans have been planted in compost and some have been planted in plastic bags. Which ones will grow better?



Year One

In Maths this week we have been focusing on positional and directional language such as; quarter turn, half turn, three-quarter turn and full turn. left, right, forward and backwards. We first practised recognising our left and right and understanding that the direction we are facing affect what is to the left and right of them.

We had lots of fun using chalk to create a 3x3 grid on the playground. We then gave instructions to our partners, using positional language, to help them get from the start, to the end square.



In PSHE this week we discussed the importance of keeping safe in the sun. We spoke about all of the ways we can keep ourselves safe, such as: wearing a hat and sunglasses, keeping in the shade and wearing suncream. After our discussion, we created a poster to show our understanding .





Year 2

This week we have been learning to tell the time. We made clocks using paper plates and used them to tell the time to o'clock, half past, quarter past and quarter to.



In PSHE we have been learning about the importance of sleep. We discussed how we feel when we have not had enough sleep, how it can affect us mentally, emotionally and physically. We then took it in turns to discuss our bedrooms and the items in it that can interrupt our sleep. We discovered the best way to get a good nights sleep is to have screen downtime an hour before bed!



In science we have been learning about how exercise and why it is important. We completed different exercise activities like jogging on the spot, star jumps and frog leaps and timed ourselves for 1 minutes. Then we discussed what exercise did to our bodies.

Year 3

This week in English, we have been writing biographies. We did our own research of celebrities to find out about their lives. Some people we chose to research included: Van Gogh, George Washington, David Attenborough and Anne Marie. In Maths, we have been learning about time, we have been looking at time on both analogue and digital clocks and we have been learning about minutes past and minutes to.

In History this week we learnt about Roman mosaics and how they show us what Roman life was like then we designed our own mosaics and made them from squares of coloured paper. We really enjoyed creating pictures from the paper, like flowers and boats.

We loved learning our new song Panda Extravaganza in music, which included fun facts about pandas.

We hope everyone has a lovely half term!

Year 4

This week in English, we have completed our own Ancient Egyptian-style myths. As a year group, we have really enjoyed this style of writing, and we produced some incredible writing over the past week. In PE, we used all of the skills we have learnt during our work on athletics, concluding with a mini Olympics where each class competed against the other. Our weekly history lesson involved work based on Ancient Egyptian hierarchy, as we explored this is a pyramid structure, which was extremely relevant to this topic! After our hard work on our canopic jars last week, we added metallic paint to our clay heads this week, which really highlighted our amazing work from our curriculum day.



Year 5

In this week's Science lesson, our students had the opportunity to explore the intriguing world of plant life cycles while reviewing their knowledge of animal life cycles.

To reinforce their understanding, the students enthusiastically engaged with the interactive game app Blooket, recapping the topic with excitement. We revisited the mnemonic "MRS GREN" to recall the essential characteristics of living organisms: Movement, Respiration, Sensitivity, Growth, Reproduction, Excretion, and Nutrition.



The students reviewed the parts of a plant and flower, using terms like petal, stem, leaf, root, stigma, filament, sepal, ovary, anther, and style. Previous lessons covered life processes, mammal reproduction, pollination, and comparisons between mammal and bird life cycles.

This week, we focused on the life cycle of plants, and the terms pollination, fertilisation, and dispersal. Predictions were made about the time it takes for a plant to grow from a bean before watching a fascinating timelapse videos. We explored the stages of the plant life cycle, including germination, root growth, leaf and stem formation, photosynthesis for food production, flowering and pollen, and seed dispersal.



Venturing outside to our school garden, students observed and recorded at least two plants, noting their length, sketching, and describing them. They also identified the specific stage in the life cycle. Our pupils really enjoyed this opportunity for outdoor learning and worked collaboratively to support one another.

Back in the classroom, a discussion ensued, and the students were challenged with a question: "Is Jenny correct in saying that the only difference between a plant and a mammal life cycle is that plants produce seeds?" Students showcased their scientific reasoning by debunking Jenny's statement and highlighting the distinctions and commonalities between mammal and plant life cycles.

As a final reflection on their learning, students were asked to consider the factors that might hinder a plant from completing its life cycle, many were able to correctly emphasise the importance of light, water, warmth, and other essential elements for optimal growth.

It was an enriching lesson that fostered a deeper understanding of plant life cycles while nurturing the students' scientific curiosity.

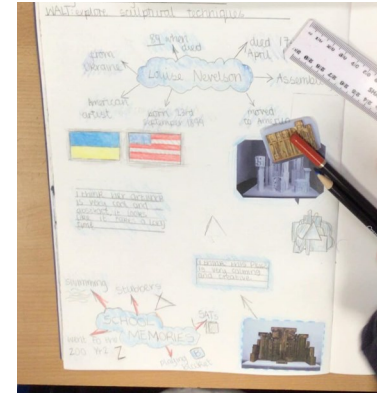
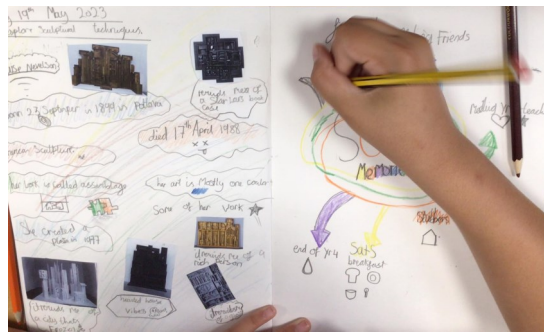




Year 6 News

NEWS ALERTS

Last week for curriculum day Year 6 explored how to use different artistic techniques to represent memories. First we learned about an artist called Louise Nevelson and how she used assemblage within her sculptures.



We then used her work as inspiration for our own: using shapes to represent memories and collaging them using coloured paper, before developing this into a clay memory sculpture. This is something they will be able to take home to remember their time in primary school forever!

This week children have also been auditioning for our end of year performance: 'I'm an 11 Year Old Get Me Out of Here!' They have all been extremely enthusiastic and we can't wait to get started with rehearsal.

Have an amazing weekend!

Year 6 Team



REACH!! FOR THE STARS

Our 'Stars of the Week' are the children that have gone over and above in their efforts. We are very proud of them for their achievements and thought they deserved an extra-special mention!

RJG	Emily	For being a kind and caring friend
RMB	Faith	For working hard to extend and improve her writing.
RFC	Islie	For her increased confidence in participating in group discussions.
RES	Renaesmae	For working hard on her independent writing.
1CH	Alfie	For a more positive attitude towards his learning.
1GC	Jenson	For his excellent independent writing in English.
1FK	Uzziah Oliver	For having an amazing attitude towards all his learning this week and completing all his task independently. For his improved focus and excellent contributions in English this week.
1BA	Zidane	For his amazing effort in writing tasks.
2MR	Isla-Dolly	For creating an imaginative and creative Ferris Wheel in DT
2RS	Henry	For his amazing effort when learning about time.
2NL	Daniel A	For being a wonderful addition to 2NL! Daniel has settled in amazingly.
2RM	Nikola	For working really hard in maths this week!
3EC	Bethany H	For always being ready to learn and having a positive attitude
3LD	Kaiden	For increased focus and working hard to achieve his best
3NM	Darcie	For her increased effort and focus, particular in English and Reading
4TH	Niamh P	For being such a supportive and helpful member of the class
4BG	Kezia H	For writing an amazing Egyptian myth
4SA	Debra O	For writing an amazing Egyptian myth
5AB	Charlie J-W	For her creativity in her writing.
5JP	Jasson	for diligently helping around our classroom and modelling self-responsibility to others
5NB	Millie-Ella R	For her increased attitude and confidence to her work.
6CP	Amelia-Rose C	For improved attitude this week.
6LC	Lucy L and Daisy D	For being very helpful working with KS1 classes
6VP	Doruk	For consistently acting upon advice and feedback
6JM	Enzo W	For outstanding enthusiasm and performances during play rehearsals.

Maths Marvels



22nd May - 26th May 2023

3NM

335

3EC

240

3LD

1

22nd May - 26th May 2023

4SA

127

4TH

60

4BG

11

22nd May - 26th May 2023

5AB

25

5NB

8

5JP

4



Well done to everyone who has accessed TTRS this week! Keep logging on and getting more points for your class.

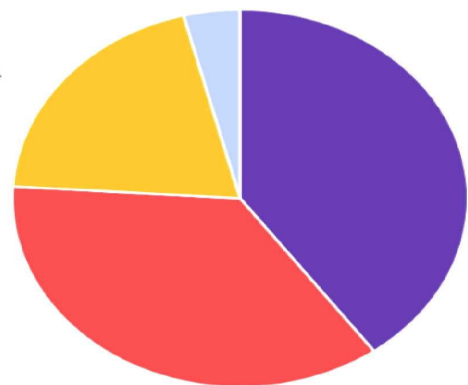
Who will be our TT Rock Stars leaders next week?

All classes	Activity points	Skill Quests points	Points - Live	Total points
3NM	10070	570	125	10765
3LD	6750	0	169	6919
RMB	1740	0	0	1740
1FK	1220	0	0	1220
1BA	420	0	0	420
4SA	280	0	0	280
4BG	70	0	0	70

ETPS PFA Update



Splitting the £1.00



- **40p** goes to our school
- **36p** goes to cash prizes
- **20p** goes to admin costs
- **4p** goes to VAT

How it works...

It's simple—choose 6 numbers between 0-9 and if they match the weekly lottery draw, you win great prizes. One of our players will win a cash prize every week, maybe even the £25k jackpot! Tickets cost just £1 per week and the proceeds are donated to East Tilbury Primary School

Every Saturday at 8pm the numbers are drawn and posted online. Winners are notified by email and winnings paid into the account of your choice.

The easiest way to join our lottery is online at YourSchoolLottery.co.uk by direct debit or debit card.

It's so easy to join and will make a real difference to East Tilbury Primary School

The Maths... 100 tickets sold a week means
= £30 weekly cash prize
= £2,080 a year for our school



To start supporting, visit:
yourschoollottery.co.uk
and search for: **East Tilbury Primary**

Supporters must be 16 years of age or older





Do you receive any of the following?

- Income support
- Employment Support Allowance (Income Related)
- Income based Job Seekers Allowance
- Guaranteed Pension Credit
- Child Tax Credit and your income (as calculated by the Inland Revenue) is less than £16,190
- Universal Credit
- Receiving support under Part VI of the Immigration and Asylum Act of 1999
- In the Armed Forces

If you can answer yes to any of the above you may qualify for free school meals/Pupil Premium

The school office will help with your application. If your application is successful not only will your child receive free school meals, but our school will receive £1,300 additional funding (per child). This is called Pupil Premium.

All applications are confidential.





Thurrock
Teacher Training

Get into Teaching

St Clare's School

Lead ITT provider in the TTSA and in partnership with the TES institute are pleased to announce that trainee places are available for the academic year 2022/2023.

*'Our trainees success rate
Securing QTS = 100%
Employed = 100%'*



Our partner schools for
2022/2023 include:

Primary

Chadwell St. Mary, Deneholm, East Tilbury,
Thameside, Stifford Clays, Horndon-on-the-hill,
Stanford-le-Hope, Dodinghurst, Little Thurrock,
Arthur Bugler, Warren Primary, Bonneygate,
Woodside.

Secondary

Grays Convent, Marshalls Park, Ormiston Park
Academy, St. Clare's School, William
Edwards, The Gateway Academy, Brentwood
County High, Hathaway Academy, Thames Park

"The Tes course was
brilliant, and I would
definitely recommend it
to others who are
thinking of entering a
career in teaching."

- 2022 Trainee

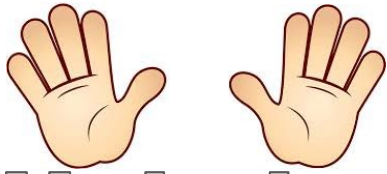


For all enquiries, please contact
thurrockteachertraining@osborne.coop

2022-2023 SCHOOL TERM DATES

September 2022							October 2022							November 2022							December 2022							
M	T	W	T	F	S	S	M	T	W	T	F	S	S	M	T	W	T	F	S	S	M	T	W	T	F	S	S	
			1	2	3	4						1	2											1	2	3	4	
5	6	7	8	9	10	11	3	4	5	6	7	8	9		1	2	3	4	5	6	5	6	7	8	9	10	11	
12	13	14	15	16	17	18	10	11	12	13	14	15	16	7	8	9	10	11	12	13	12	13	14	15	16	17	18	
19	20	21	22	23	24	25	17	18	19	20	21	22	23	14	15	16	17	18	19	20	19	20	21	22	23	24		
26	27	28	29	30			24	25	26	27	28	29	30	21	22	23	24	25	26	27	26	27	28	29	30	31		
							31							28	29	30												
January 2023							February 2023							March 2023							April 2023							
M	T	W	T	F	S	S	M	T	W	T	F	S	S	M	T	W	T	F	S	S	M	T	W	T	F	S	S	
						1			1	2	3	4	5			1	2	3	4	5							1	2
2	3	4	5	6	7	8	6	7	8	9	10	11	12	6	7	8	9	10	11	12	3	4	5	6	7	8	9	
9	10	11	12	13	14	15	13	14	15	16	17	18	19	13	14	15	16	17	18	19	10	11	12	13	14	15	16	
16	17	18	19	20	21	22	20	21	22	23	24	25	26	20	21	22	23	24	25	26	17	18	19	20	21	22	23	
23	24	25	26	27	28	29	27	28						27	28	29	30	31			24	25	26	27	28	29	30	
30	31																											
May 2023							June 2023							July 2023							August 2023							
M	T	W	T	F	S	S	M	T	W	T	F	S	S	M	T	W	T	F	S	S	M	T	W	T	F	S	S	
1	2	3	4	5	6	7				1	2	3	4						1	2		1	2	3	4	5	6	
8	9	10	11	12	13	14	5	6	7	8	9	10	11	3	4	5	6	7	8	9	7	8	9	10	11	12	13	
15	16	17	18	19	20	21	12	13	14	15	16	17	18	10	11	12	13	14	15	16	14	15	16	17	18	19	20	
22	23	24	25	26	27	28	19	20	21	22	23	24	25	17	18	19	20	21	22	23	21	22	23	24	25	26	27	
29	30	31					26	27	28	29	30			24	25	26	27	28	29	30	28	29	30	31				
														31														

	School Holiday
	Bank Holiday
	Additional Autumn Half Term (currently Thurrock schools only)
	Inset days, schools closed to students (20 th /21 st July payback for Twilight sessions)
	Trust Conference, schools closed to students



Help is at hand

Keep in touch!

We are missing being in contact but do not forget we are still here to help where we can.



Our school office is open to receive calls between 8:30am and 3pm.

Tel: 01375 846181

Email: office.etp@osborne.coop



East Tilbury Primary School
Princess Margaret Road
East Tilbury, Essex, RM18 8SB



We are also regularly updating our Facebook page and Twitter feed.

Log on and have a look!



Twitter: [@EastTPPrimary](https://twitter.com/EastTPPrimary)

At East Tilbury Primary School our Designated Safeguarding Leads (DSL) are:

- ◇ Mrs Bates
- ◇ Mrs Dawson

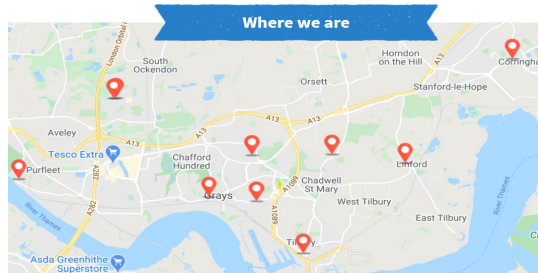
Due to the size of the school, we have the following designated staff who can deputise in the Head of School's absence:

- ◇ Mr Gowland
- ◇ Mr Bennett
- ◇ Mrs Jarvis
- ◇ Mrs Mylam
- ◇ Mrs Allen

Pupils can contact any of our Safeguarding Team during the school day.

Worried about a child? You can phone or write to MASH about your concerns. Phone **immediately** if you believe it is urgent.

[Thurrock MASH \(Multi Agency Safeguarding hub\), Civic Offices, New Road, Grays, Essex, RM17 6SL, Tel: 01375 652802. Emergency Duty Team \(for out of hours\) 01375 372468. · Police Child Abuse Investigation Team 01277 266822 or call 999 if you are concerned a child needs immediate protection. · Childline 0800 11 11 \[www.childline.org.uk\]\(http://www.childline.org.uk\) · NSPCC 0808 800 5000 \[www.nspcc.org.uk\]\(http://www.nspcc.org.uk\); \[www.facebook.com/nspcc\]\(https://www.facebook.com/nspcc\)](#)



LOCATIONS

Here are the opening times and locations for our foodbank centres. Everyone who comes to the foodbank for emergency food needs to have a valid foodbank voucher.

Tues 14:00-16:00: St. Mary's Church hall, St. Mary's Church, Dock Rd, Grays, RM17 6EX.

Weds 09:30-12:00: Thurrock Christian Fellowship, 2-4 Chase Rd, Corringham, S17 7QH

Weds 13:30-15:00: Sockets Heath Baptist Church, Premier Avenue, Grays, RM16 2SB

Thurs 11:00-13:00: St. Francis Centre, Somerset Rd, Linford, SS17 0QA

Thurs 11:00-13:00: All Saints Church of England, Foyle Drive, Sth Ockendon, RM15 5HF

Fri 10:12:00: St. Stephen's Church of England, London Rd, Purfleet, RM19 1QD

Sat 09:30-11:30: Emmanuel Church of England, Sleepers Farm Rd, Chadwell St. Mary, RM16 4TP

Sat 10:00-12:00: All Saints Church of England, Foyle Drive, Sth Ockendon, RM15 5HF

Sat 10:00-12:00: Christian Gates of Praise International Christian Centre, 79-83 London Rd, Grays, RM 17 5YF