

School News

A MESSAGE FROM THE SENIOR LEADERSHIP TEAM

Dear Parents/Carers,

Welcome back to a new term at school. It has been an exciting and busy week as the school welcomed two Ofsted inspectors for a school inspection. As leaders we are so proud of the way the children and staff showcased all the wonderful work they do and we eagerly await the written inspection report. Once this report is with us and has gone through quality assurance we will share it with you and the wider community asap.

Thank you for all your support in helping this school to be the best it can be!

Have a relaxing weekend ahead

The leadership team



Important Information

If your child has an injury and has been given medical advice that we need to follow as a school, please bring them to the school office for 8.15am on their first day back at school following the injury so that we can complete a risk assessment.

Thank you for your cooperation.

Absence

If your child is too ill to attend school, this must be reported to us by no later than **9.00am**. Please telephone the school, press one and leave a message on the voicemail box stating your child's full name, class, the reason for absence and when we can expect them to return to school (if known).

Home Visits will be carried out for any child that is absent for 3 or more school days without reason.

We need you...



Please label all children's school uniform. This helps us return lost property to the correct child and prevents parents from having to replace missing uniform as often. This is particularly important as the weather is colder and children are wearing jumpers/cardigans to school.

We are missing a significant number of reading books. If you have any left at home (whatever condition) please return them.

Thank you

Please be reminded that pupils should not be wearing jewellery to school. Children with pierced ears may wear small stud earrings but hoops are not permitted.

Thank you for your support

Please ensure your child has a PE kit in school each day. If you are struggling with this, please contact Mrs Jarvis or Mrs Allen.

Thank You

We are continually updating our OPAL resources and would gladly accept donations of:

- Tennis balls
- Footballs
- Bats
- Dressing up clothes
- Colouring books
- Crayons
- Big cars
- Lego



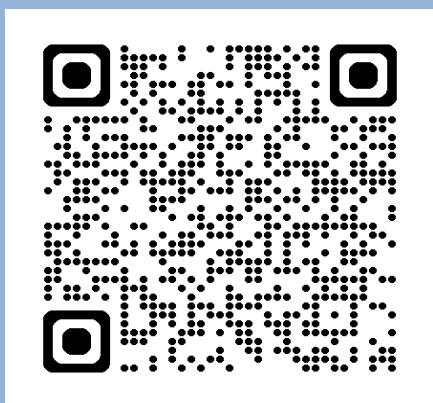


SEND in Focus

April is Autism Awareness Month, promoting understanding and acceptance of the condition.

Autism is a neurodevelopmental condition that affects how a person perceives and interacts with others. Whilst every person with Autism is different, they may have difficulties understanding how others feel; struggle to express their needs, take longer to process information; find sensory experiences overwhelming and show a repetition of behaviours.

If your child has Autism or is on the pathway for a diagnosis, there is a range of support for children and families. The National Autistic Society have a support group in Thurrock. Feel free to access the QR code below for contact information:



There is also support available for parents through the Thurrock Family SEND Forum:

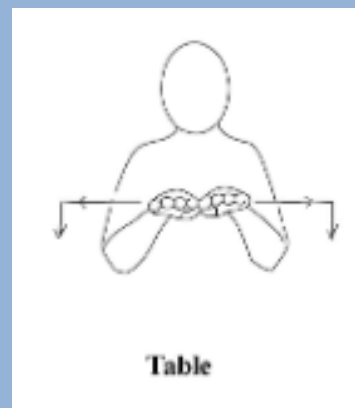
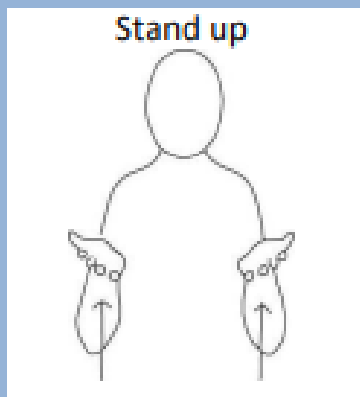
If you would like signposting to any further services, please do not hesitate to contact Mrs Mylam.



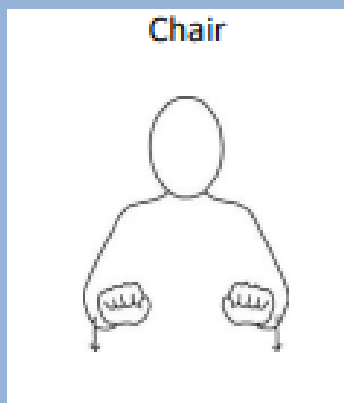
SEND in Focus

Makaton Signs of the week:

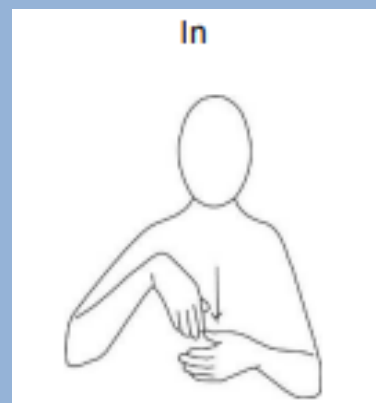
Why not speak with your child and see what signs they can remember from what they've already been taught?



[Bing Videos](#)



[Makaton for 'chair'](#)





SEND in Focus

All things Thurrock SEND

Parents are invited to engage with the Assistant Director for Education and Children's Commissioning and the Portfolio Holder for Children's Services & Education. They can share their experiences on topics such as the Special Educational Needs and Disabilities (SEND) service, inclusion, phase transitions, and community access. Sessions are scheduled on various dates from March to July 2025. Parents are encouraged to participate and share their insights.

The sessions are scheduled for the following dates:

- 19 March, 2025, at 6pm
- 28 March, 2025, at 10am
- 23 April, 2025, at 6pm
- 25 April, 2025, at 10am
- 21 May, 2025, at 6pm
- 22 May, 2025, at 11am
- 27 June, 2025, at 10am
- 4 July, 2025, at 10am
- 16 July, 2025, at 6pm

Places can be booked [here](#) [SEND Engagement Opportunities](#)



Diary Dates

Monday 5th May 2025	Bank Holiday – no school for pupils
Monday 12th May 2025- Thursday 15th May 2025	Year 6 SATS week
Friday 23rd May 2025	Last day of Term (Non-Uniform Day)
Monday 26th May 2025-Friday 30th May 2025	Half Term
Monday 2nd June 2025	Pupils back to school (Clubs are ON this week)
Friday 18th July 2025	Last day of the academic year for pupils (Non-Uniform day)
Monday 21st and Tuesday 22nd July 2025	INSET Days (no school for pupils)

Do you need support?

East Tilbury Primary Schools Online Pastoral Support.

We are very excited to launch our new Pastoral service to our school community. From today you can access support by completing a simple and quick online form.

We have been working hard over the last few months to set up extra support for our families which is very much needed at this challenging time. If you require support, then please do not hesitate to reach out. We are hoping this service will be a fantastic addition to the support we can provide for our school community. Please reach out if you need anything, we are always here to offer you support.

To make the process simple we have created a QR Code (at the top of the poster) which you can just scan, and this will take you directly to the form.

WE CAN HELP WITH

- Food
- School Uniform
- Hygiene Products
- Wellbeing

FOR MORE INFORMATION VISIT:

www.easttilburyprimary.thurrock.sch.uk



Class News

Reception

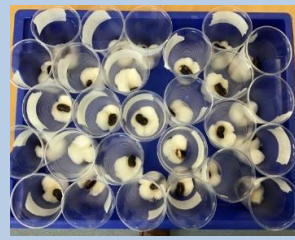
This week we have been reading the story 'The Gingerbread Man' and we have all very much enjoyed making and decorating our own gingerbread men. We carefully followed the instructions step by step, working well as a team. This week in Phonics we have been learning 'ar' and 'or'.

Here are some of our pictures of us from this week!



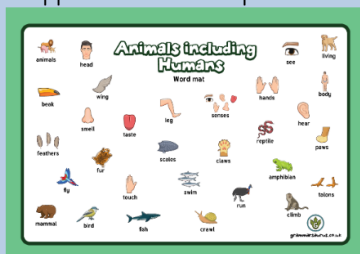
Year One

This week, Year 1 have started a new topic in science about plants. We examined and named different plants, seeds and bulbs. Then, we compared the plants thinking thoroughly about their differences and similarities focusing on their shapes, sizes and colour. After, we observed some bulbs and seeds and discussed what they would grow into. For our activity, we enjoyed planting our seeds and completing our plant diaries to keep a record of questions we would like to find answers to and the growth of our seeds.



Year Two

This week, Year 2 have been introduced to their new History topic 'The Great Fire of London'. They have already shown a great interest in this topic where the children were enthusiastic and ready to learn! To begin, the children listened to the story of The Great Fire of London and sequenced the events of the story in chronological order. The children were able to remember the key events by explaining in detail what happened to their partners.



Furthermore, Year 2 were also introduced to their new science topic 'Animals including humans' where they carried out a cold task so their class teacher can understand what the children already know about this topic, and what is needed to be taught.

Class News

Year Three

We have enjoyed our first week back after the Easter holidays. We started our week with a whole school assembly about how we are all unique and accepting people's differences. In maths this week, we have looked at telling the time to the minute. For English, we have been looking at the features of instructions, we used the features to write a set of instructions to make a jam sandwich. Our teachers then made a jam sandwich from our instructions. For PE this half-term, we are learning skills for cricket and athletics.



Year Four

It's been a busy and exciting week in Year 4!

In Maths, we've been exploring the perimeter of shapes, using rulers to measure and add up the lengths and breadth of different sides. We enjoyed drawing their own shapes and calculating the perimeters.

Our History lessons took us back in time to the fascinating world of the Ancient Egyptians. We used textbooks to research new facts, and the class loved uncovering interesting details about pyramids, mummies, and hieroglyphics.

In English, we delved into the gruesome world of the plague. We were both horrified and fascinated to learn about the symptoms – especially the buboes! We've started turning our knowledge into scripts.

In Music, we explored the idea of slow tempo, which helped us understand how speed can change the feel of a song. Lastly, in Science, we investigated the states of matter, focusing on how water behaves differently when it's frozen compared to room temperature.

Well done, Year 4 – keep up the amazing work!

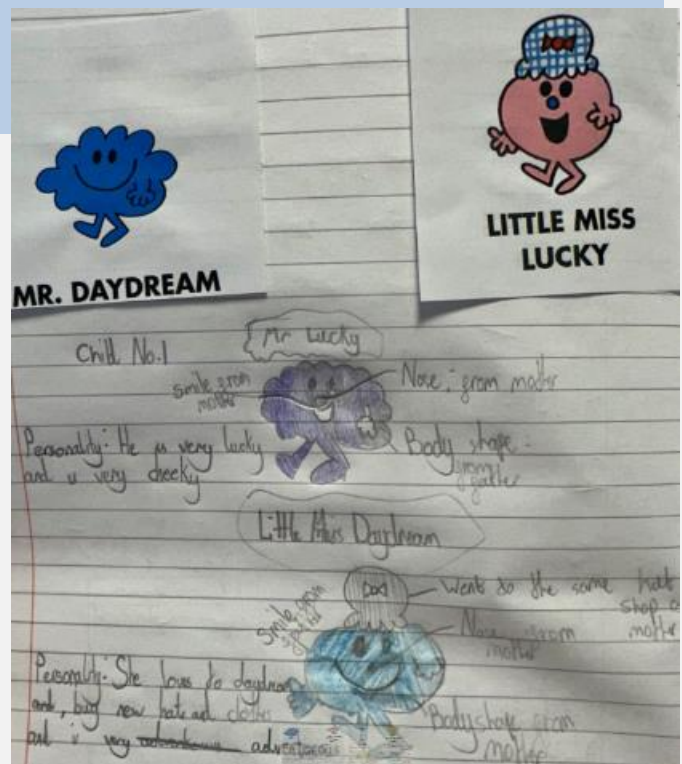
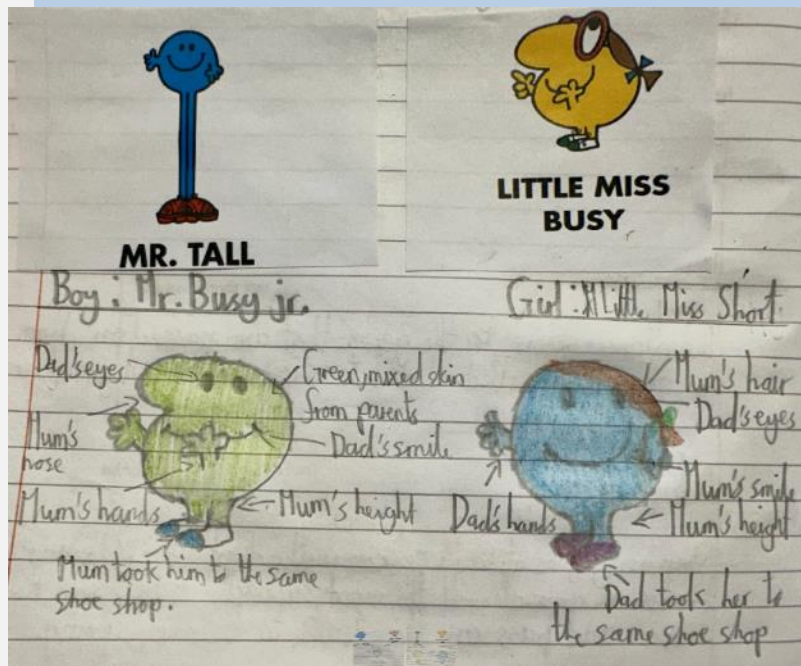
Year Five

In Year Five this week, we started our new writing unit, based on the short, animated film 'The Present'. We explored war imagery and used figurative devices to enhance our writing, with links made to modern gaming. In science we began looking into different types of reproduction in animals and plants. During our PE lessons, we examined different throwing techniques and tested these out to maximise how our bodies create power to gain maximum distances. This linked nicely into our maths lessons, where we are working on converting different units of measure.

Class News

Year Six

This week, we have started our new topics in Year 6. In English, we are looking at poetry in the form of snappy raps, written by Eloise Greenfield. In mathematics, we have dived into algebra – solving and finding an unknown within an equation. Elsewhere in science, and forming the pictures from this week's learning, we have started our unit in evolution and inheritance. In the lesson, we looked at characteristics we inherit from our parents and traits we acquire from our environment. Furthermore, we saw why genetics cause variations to happen, and started to explore what this means in some species.





Reach for the Stars



Our 'Stars of the Week' are the children that have gone over and above in their efforts. We are very proud of them for their achievements and thought they deserved an extra-special mention!

RBG	All of RBG	For brilliant teamwork when making gingerbread men.
RES	All of RES	For brilliant teamwork when making gingerbread men.
RFK	All of RFK	For brilliant teamwork when making gingerbread men.
1BA	Ronnie	For settling well into Year 1 this week.
1EC	Edie-Marie	For her independence and hard work in all subjects.
1LD	Kyrie	For her creative construction.
2RM	Vanni	For settling well into year 2 this week.
2CH	Clara	For always going above and beyond the learning expectation.
2MF	Tomilayo	For always showing teamwork and a positive attitude.
2BG	Demi	For her effort across all subjects this week.
3ML	Oyindola	For his effort with telling the time in maths this week.
3RS	Sariyah	For her hard work in maths this week.
3SG	Cassian	For his effort and curiosity in computing.
3VP	Beau P	For her effort across all subjects and improved attitude to learning.
4CP	Archie D	For having an amazing first week.
4KC	Oakley M-S	For his increase in confidence during lessons when asking questions and reading his work, and speaking confidently with an Ofsted inspector.
4MR	Lottie P	For showing self-responsibility when learning perimeter in maths this week.
5NM	Shaila	For being compassionate, being a good friend, supporting her peers, and her hard work in all lessons this week.
5SA	All of 5SA	For engaging and showing a huge effort in French.
5TH	Adedoyin	For showing huge improvements in the quality of his writing.
6AB	All of 6AB	For their enthusiasm and engagement in reading skills lessons this week.
6LC	Jack B	For demonstrating a positive attitude towards his learning.
6NB	Charlie P	For being an upstanding role model; consistently demonstrating the cooperative values.



Maths Marvels



All pupils at East Tilbury Primary have logins for Times Tables Rockstars and are able to log on at home to practice their times tables.



What Parents & Educators Need to Know about MAKING FRIENDS ONLINE

In today's digital world, it's increasingly common for children to form friendships with people they've never met in person. While online connections can offer children a sense of belonging, they also carry significant risks. Around 19% of children aged 10 to 15 in England and Wales have chatted online with someone they've never met face to face. This guide offers expert advice for parents and educators on helping children navigate online friendships safely.

WHAT ARE THE RISKS?

ONLINE GROOMING THREATS

Predators can use games, chat apps or social media platforms to build relationships with children and gain their trust. This may quickly develop into grooming or exploitation. Between April 2017 and March 2023, UK police recorded nearly 34,000 online grooming offences – an 82% increase in just five years.

EXPOSURE TO INAPPROPRIATE CONTENT

Children may encounter distressing or explicit material while interacting with online contacts – especially via TikTok, Instagram or Snapchat. This is evidenced in a survey by the Children's Commissioner for England, which found that 45% of children aged 8 to 17 had seen content online that made them feel uncomfortable, worried or upset.

PRIVACY AND DATA RISKS

Children and young people often overshare personal details – such as where they live or go to school – without understanding the consequences. In fact, 4.4% of 10 to 15-year-olds in the UK have met up in real life with someone they'd only spoken to online.

COMPROMISED PERSONAL SAFETY

Meeting an online 'friend' in real life risks placing a child in serious danger. From abduction to coercion, the consequences can be devastating. Reports of children being harmed after such meetings are becoming increasingly common in the UK, highlighting the need for safeguarding intervention.

PSYCHOLOGICAL DISTRESS

Online harm – such as cyberbullying, grooming or exposure to disturbing content – can lead to long-term emotional issues, including anxiety, depression and PTSD. 'Sexortion' gangs, who threaten to release sexual information about a person unless they pay them money, have reportedly targeted children as young as 11, leaving them traumatised and ashamed.

LONG-TERM REPERCUSSIONS

Children exposed to harmful online relationships early on may develop unhealthy beliefs about relationships, consent, or self-worth. In a recent case, a 26-year-old posed as a girl on Snapchat to befriend children aged 10 to 16, manipulating them into sexual activity and causing profound emotional distress. One 12-year-old tragically died by suicide, highlighting the long-term psychological harm online friendships with strangers can cause.

26 FRIENDS ONLINE NOW

Advice for Parents & Educators

TEACH SAFE ONLINE HABITS

Help children understand how to use privacy settings, protect their personal information, spot fake profiles, and report anything suspicious or concerning, like pressure tactics. Encourage them to think critically about what they share – and whom they're talking to.

KEEP CONVERSATIONS OPEN

Let children know they can talk to you about their online life. Avoid reacting with anger or judgement, as this may prevent them from opening up in the future. A child who feels listened to is more likely to disclose problems before they escalate.

ENCOURAGE REAL-WORLD CONNECTIONS

Support children in building friendships through school, clubs, hobbies and activities in the real world. Strong offline relationships help reduce children's reliance on online platforms for social interaction, and can help them develop resilience and social confidence.

USE PARENTAL CONTROLS

Parental control settings on devices, games and apps can help manage screen time, filter out inappropriate content, and monitor activity. While no system is perfect, they provide a valuable layer of protection as children explore digital spaces.

Meet Our Expert

Gabriella Russo is a safeguarding consultant with over 30 years' experience in supporting children, families, and adults across education, local authority, and mental health settings – both in the UK (including at Parliamentary level) and internationally.



#WakeUpWednesday

The National College



Thurrock
Teacher Training

Get into Teaching

St Clare's School

Lead ITT provider in partnership with Tes institute are pleased to announce that trainee places are available for the academic year 2025/2026.

*'Our trainees success rate
Securing QTS = 100%
Employed = 100%'*



Our partner schools for
2025/2026 include:

Primary

Chadwell St. Mary, Deneholm, East Tilbury, Thameside, Stifford Clays, Horndon-on-the-hill, Stanford-le-Hope, Doddinghurst, Little Thurrock, Arthur Bugler, Warren Primary, Bonnygate Primary, Woodside Academy

Secondary

Grays Convent, Marshalls Park, Ormiston Park Academy, St. Clare's School, William Edwards The Gateway Academy, Brentwood County High, Hathaway Academy, Orsett Heath Academy

"The Tes Institute course was brilliant, and I would recommend it to others who are thinking of entering a career in teaching"
- 2024 Trainee

For all enquiries please contact:
thurrockteachertraining@osborne.coop

Keep in Touch



Our school office is open to receive calls between 8:30am and 3pm.

Tel: 01375 846181

Email: office.etp@osborne.coop

East Tilbury Primary School

Princess Margaret Road
East Tilbury, Essex, RM18 8SB



We are also regularly updating our Facebook page and Twitter feed. Log on and have a look!



Twitter:
[@EastTPrimary](https://twitter.com/EastTPrimary)



At East Tilbury Primary School our Designated Safeguarding Leads (DSL) are:

- Mrs Dawson

Due to the size of the school, we have the following designated staff who can deputise in the Headteacher's absence:

- Mr Gowland
- Mrs Jarvis
- Mrs Mylam
- Mrs Allen
- Mrs Sheridan

Pupils can contact any of our Safeguarding Team during the school day.

Worried about a child? You can phone or write to MASH about your concerns. Phone immediately if you believe it is urgent.

Thurrock MASH (Multi Agency Safeguarding hub), Civic Offices, New Road, Grays, Essex, RM17 6SL, Tel: 01375 652802. Emergency Duty Team (for out of hours) 01375 372468. · Police Child Abuse Investigation Team 01277 266822 or call 999 if you are concerned a child needs immediate protection. · Childline 0800 11 11 www.childline.org.uk · NSPCC 0808 800 5000 www.nspcc.org.uk; www.facebook.com/nspcc



Tues 14:00-16:00: St. Mary's Church hall, St. Mary's Church, Dock Rd, Grays, RM17 6EX.

Tues 11:00-13:00: St. John the Baptist Church, Tilbury, Dock Road, Tilbury, RM18 7PP

Weds 11:00-13:00: Gateway People's Centre, High Street, Stanford Le Hope, Essex, SS17 0EY

Weds 13:00 -14:30: Sockets Heath Baptist Church, Premier Avenue, Grays, RM16 2SB

Thurs 11:00-13:00: St. Francis Centre, Somerset Rd, Linford, SS17 0QA

Thurs 11:00-13:00: All Saints Church of England, Foyle Drive, Sth Ockendon, RM15 5HF

Fri 10:12:00: St. Stephen's Church of England, London Rd, Purfleet, RM19 1QD

Sat 09:30-11:30: Emmanuel Church of England, Sleepers Farm Rd, Chadwell St. Mary, RM16 4TP

Sat 10:00-12:00: All Saints Church of England, Foyle Drive, Sth Ockendon, RM15 5HF

Sat 10:00-12:00: Christian Gates of Praise International Christian Centre, 79-83 London Rd, RM175YF

September 2024							October 2024							November 2024							December 2024						
M	T	W	T	F	S	S	M	T	W	T	F	S	S	M	T	W	T	F	S	S	M	T	W	T	F	S	S
						1		1	2	3	4	5	6					1	2	3							1
2	3	4	5	6	7	8	7	8	9	10	11	12	13	4	5	6	7	8	9	10	2	3	4	5	6	7	8
9	10	11	12	13	14	15	14	15	16	17	18	19	20	11	12	13	14	15	16	17	9	10	11	12	13	14	15
16	17	18	19	20	21	22	21	22	23	24	25	26	27	18	19	20	21	22	23	24	16	17	18	19	20	21	22
23	24	25	26	27	28	29	28	29	30	31				25	26	27	28	29	30		23	24	25	26	27	28	29
30																					30	31					
January 2025							February 2025							March 2025							April 2025						
M	T	W	T	F	S	S	M	T	W	T	F	S	S	M	T	W	T	F	S	S	M	T	W	T	F	S	S
		1	2	3	4	5						1	2						1	2		1	2	3	4	5	6
6	7	8	9	10	11	12	3	4	5	6	7	8	9	3	4	5	6	7	8	9	7	8	9	10	11	12	13
13	14	15	16	17	18	19	10	11	12	13	14	15	16	10	11	12	13	14	15	16	14	15	16	17	18	19	20
20	21	22	23	24	25	26	17	18	19	20	21	22	23	17	18	19	20	21	22	23	21	22	23	24	25	26	27
27	28	29	30	31			24	25	26	27	28			24	25	26	27	28	29	30	28	29	30				
														31													
May 2025							June 2025							July 2025							August 2025						
M	T	W	T	F	S	S	M	T	W	T	F	S	S	M	T	W	T	F	S	S	M	T	W	T	F	S	S
			1	2	3	4						1			1	2	3	4	5	6					1	2	3
5	6	7	8	9	10	11	2	3	4	5	6	7	8	7	8	9	10	11	12	13	4	5	6	7	8	9	10
12	13	14	15	16	17	18	9	10	11	12	13	14	15	14	15	16	17	18	19	20	11	12	13	14	15	16	17
19	20	21	22	23	24	25	16	17	18	19	20	21	22	21	22	23	24	25	26	27	18	19	20	21	22	23	24
26	27	28	29	30	31		23	24	25	26	27	28	29	28	29	30	31				25	26	27	28	29	30	31
							30																				

	School Holiday
	Additional autumn half term (some Thurrock schools only)
	Inset days, schools closed to students
	Trust conference, schools closed to students
	Bank Holidays