

# School News

## A MESSAGE FROM THE SENIOR LEADERSHIP TEAM

Dear Parents and Carers,

It has been another exciting week at school with lots of hard work and commitment shown by the children!

### An invitation to represent our school at T100 Goes Wild Flag Parade on 22 June

T100 is an annual walking, talking and making festival that encourages multiple stories to surface in Thurrock. Over the last ten years, they've travelled on a journey with a growing team of local volunteers, artists and partners and created hundreds of colourful silk flags inspired by local stories and volunteers. Some of these flags were created by students at the East Tilbury Primary School in 2016 and they would like to invite the current students and their families to represent the school by joining them for the family friendly flag parade in Grays on Saturday 22 June between 12:30-2:30pm (with a free flag movement workshop from 10am). Please use the link below to sign up to take part and carry one of the East Tilbury Primary School flags on the day (they have plenty of other local flags too for everyone to get involved so please share this invitation with your networks).  
<https://tinyurl.com/flagparade2024>

If you have any questions, please get in touch with Kinetika on: [hello@kinetika.co.uk](mailto:hello@kinetika.co.uk).

### Our school Facebook page

Please do check out our school Facebook page! It has lots of interesting information for parents about the day-to-day life of our school and upcoming events. It is a great source of information and many of our families tell us how helpful it is.

### Reception outdoor area

Our amazing team have been busy re-designing the Early Years outdoor area to include a wonderful natural garden space, performing arts stage and a building and construction zone! We are sure the Reception children will love the updated space!

We hope that you enjoy the weekend ahead and have a great half term holiday. See you all again on Monday 3<sup>rd</sup> June.

The Leadership Team



# Upcoming Events

EYFS Sports Morning  
Wednesday 26th June  
9.30am - 11am

Year 1 and 2 Sports Morning  
Thursday 27th June  
9.30am - 11am

Year 3 and 4 Sports Afternoon  
Wednesday 26th June  
1.30pm - 3.00pm

Year 5 and 6 Sports  
Afternoon  
Thursday 27th June  
1.30pm - 3.00pm

Let your child wear their PE kit all day, including a house-coloured t-shirt.  
Team colours will be sent home in reading records or books bags before  
half term.

Thursday 6<sup>th</sup> June 2024

Class Photo Day



# Sporting News



Well done to the 9 children who participated in the Thurrock SSP cricket last Friday.

They placed runners up in their group.

Well done team ETPS

# Important Information



**FREE School Uniform**  
free for everyone,  
no referral needed!

**Events**

**Fridays**  
3 - 4.30pm

19th January  
16th February  
15th March  
19th April  
17th May  
21st June

**Saturdays**  
10 - 11.30am

20th January  
17th February  
16th March  
20th April  
18th May  
22nd June

**Community Church Chadwell St Mary**  
Defoe Parade (enter from Brentwood Road)  
RM16 4QR

**Save the planet 🌍, and your pennies 💰!**  
**Hundreds of items in stock:**

- Polo shirts
- Shirts & blouses
- Skirts
- Trousers
- Socks
- Pinafore dresses
- Jumpers & cardigans
- Blazers & ties
- PE kit incl football socks
- Plimsolls
- Black shoes
- Coats

Clean, good condition school uniform donations accepted when space allows. Please check our facebook page to see if we are currently collecting. Search facebook for "The 180 Project"

An event run by The 180 Project, part of Community Church  
Registered charity no. 1062301. Tel: 01375 484 101

We have a very limited stock of uniform due to our uniform store being in the RAAC area of the school. If you are in need of uniform please visit the 180 project at the Community Church in Chadwell St Mary.

If your child has an injury and has been given medical advice that we need to follow as a school, please bring them to the school office for 8.15am on their first day back at school following the injury so that we can complete a risk assessment. Thank you for your cooperation.

## Absence

If your child is too ill to attend school, this must be reported to us by no later than **9.00am**. Please telephone the school, press one and leave a message on the voicemail box stating your child's full name, class, the reason for absence and when we can expect them to return to school (if known).

Home Visits will be carried out for any child that is absent for 3 or more school days without reason.

# We need you



## Help Us Enhance our EYFS Outdoor Area! 🌳

Calling all kind-hearted donors! 🙏 We are thrilled to announce that we are working on transforming our Early Years Foundation Stage (EYFS) outdoor area into a vibrant, interactive space for our little learners. 🌈

Do you happen to have any of the following items that are yearning for a new purpose? If so, we would be incredibly grateful for your generous donations to our school. 📺❤️

Let's create an unforgettable outdoor haven where our little ones can explore, learn, and grow! 🌈🌱

### Can You Help Us?

We are looking for extra outdoor resources to help us support your child's learning and development. Any help, big or small, makes a big difference and you may be surprised by what we are looking for! Thank you for your support.

#### We Are Looking For:

- |   |  |
|---|--|
| <ul style="list-style-type: none"><li>• Guttering and tubes</li><li>• Funnels</li><li>• Cable drums and reels</li><li>• Pallets</li><li>• Tyres</li><li>• Steering wheels</li><li>• Crates</li><li>• Buckets and/or containers</li><li>• Gardening tools for children – trowels, watering cans, spade, brush</li><li>• Large, old furniture such as cupboards, chairs, tables (to create a mud kitchen)</li><li>• Utensils – spoons, tongs, scoops, ladles, rolling pins, potato mashers</li><li>• Cutlery, bowls and plates</li><li>• Pots, pans and muffin trays</li><li>• Jugs and funnels</li></ul> | <ul style="list-style-type: none"><li>• Soil and/or compost</li><li>• Bark chippings</li><li>• Seeds, bulbs and/or plants</li><li>• (Pine)cones, acorns, conkers</li><li>• Shells</li><li>• Sticks</li><li>• Leaves</li><li>• Bark</li><li>• Stones and pebbles</li><li>• Moss</li><li>• Flowers/petals</li><li>• Feathers</li><li>• Tree stumps and/or log slices of different size, heights and widths</li></ul> |
|---|--|



**Exciting News! Join Us in Enhancing Lunchtimes at Our School with OPAL 🌳🍌📖**  
Hey everyone! We're thrilled to share that we're taking our lunchtimes to the next level with our OPAL (Outdoor Play & Learning) initiative! ✨ Thanks to OPAL, our lunchtimes have already seen a positive transformation, and now, with your support, we can make them even better. 😊

#### 📺 Donation Wishlist:

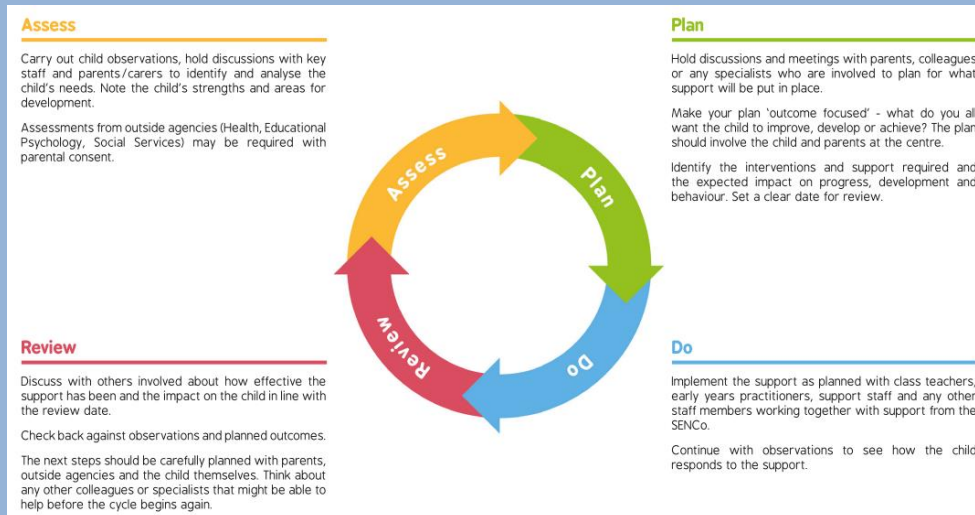
- Prams (toy size and child size) 🧸
- Dolls & Teddy Bears (large and small) 🧸
- Lego 🧱
- Reading Books 📖
- Scooters 🛹
- Bike Helmets 🚲

Your contributions will help us create a more fun and engaging lunchtime experience for all our students.



# SEND in Focus

At East Tilbury Primary School, we follow the Graduated Approach where the school staff, and other professionals, work with the parents and child to ensure that they are being provided with the appropriate support and resources to help their needs.



Thank you to the parents who attended the SEND consultations this week. It was lovely to hear about your child's progress at home and to come together to discuss how we can help your child improve further. If you have not managed to book a SEND consultation with Mrs Mylam, please get in touch to arrange a convenient time.

If you still have not managed to complete the family views form, please return it at your earliest convenience. It really helps us to hear about how your child is getting on at home so we can continue to support them in the best possible way.



# SEND in Focus

thurrock.gov.uk

## THE LOCAL OFFER

Information for parent and carers



### What is the Local Offer?

- The SEND Local Offer is designed to help improve the lives of children with Special Educational Needs and/or Disabilities (SEND), as well as their families and those who care for them.
- It provides information where individuals with SEND aged 0-25, as well as their parents or carers, and professionals can go to find out what support or provision they can expect to be available in their local area.
- Under the Children and Families Act 2014, each local authority has a legal responsibility to publish its Local Offer. It needs to be published online, as well as in an alternative format for those without internet access.

### The Local Offer will..

- Provide information about education, health, and care services.
- Offer details on leisure activities and support groups.
- Centralise all information in one accessible location.
- Encompass various local agencies, including education, health, and social care services.
- Cover childcare, independent schools, care placements, apprenticeships, transport, specialist teachers, therapy services, and other support
- Include relevant regional and national specialist provisions for children and young people with rare and complex SEND.

### You can:

- Browse by subject
- Listen to podcast episodes
- Find the latest service developments
- See our engagement calendar
- Family Newsletters
- Details on Thurrock SEND Family Forum
- Enter competitions

### Also included:

- Key word search functionality
- Accessibility functions

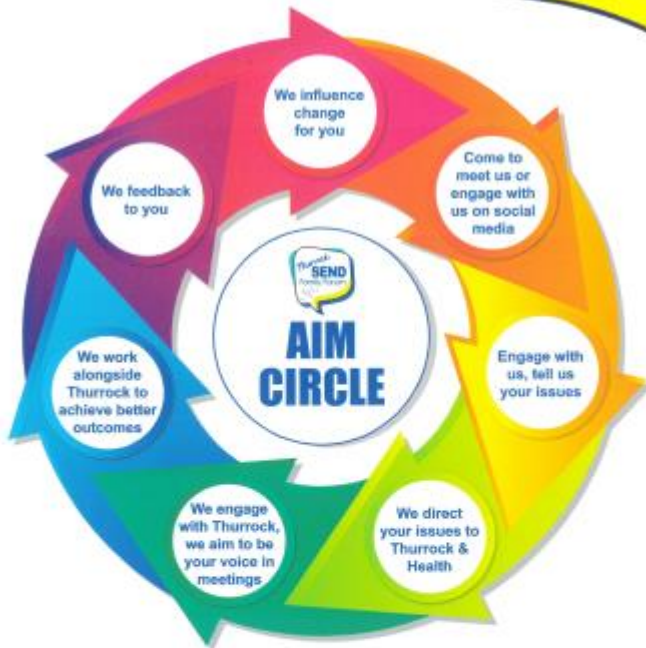


[www.askthurrock.org.uk](http://www.askthurrock.org.uk)

thurrock.gov.uk



# SEND in Focus



**Join us! Talk to us! Share our events!**

**Follow us on social media**   

If you would like to join our mailing list or know more about being part of the forum please email: [thurrockparentcarers@gmail.com](mailto:thurrockparentcarers@gmail.com)

*(N.B The Parent/Carers' Forum is not used for individual complaints and issues. Concerns or complaints involving individual children / young people, families will be signposted to PATT - SENDIAS service for advice and personal support.)*

Thurrock SEND Family Forum  
c/o TCIL, The Beehive, West Street  
Grays, Essex, RM17 6XP

## Aims



Thurrock SEND Family Forum (TSFF) aims to be a well-informed, connected and empowered community for families of children / young people with disabilities or additional needs (SEND). We live here and run the forum in Thurrock, in partnership with the Local Authority (Education and Social Care) and Health providers to create quality services that meet the needs of parent carers and their SEND children / young people. We do this through activities of engagement, participation and co-production with others.

*We aim to:*

- Provide parents / carers with a relaxed, informal place to meet and share their views on how things are going and how the borough can improve
- Be your voice and we aim to not only listen, but also to act
- Develop partnership working with Thurrock Council, Health and parent / carers to support and promote SEND needs within the borough
- Feedback parent carer experiences and views to challenge service providers in order to positively influence the development of services and improve outcomes for SEND children and young adults through co-production activities with families and services
- Be clear and approachable, accessible to all
- Tell you about how your voices have made a difference for local families and services
- Promote diversity, disability equality and challenge discrimination on all levels within the borough
- Involve local parents, explain how the forum works and invite parent carers to become involved with our volunteer roles
- Connect with other parent carer forums across Essex, Southend and Thurrock and within the local region

Thurrock SEND Family Forum  
c/o TCIL, The Beehive, West Street  
Grays, Essex, RM17 6XP

# Diary Dates

Monday 27 <sup>th</sup> May – Friday 31 <sup>st</sup> May 2024	Half Term
Tuesday 4 <sup>th</sup> June 2024 and Wednesday 5 <sup>th</sup> June 2024	New Reception intake meeting – 9:30am and 2pm
Thursday 6 <sup>th</sup> June 2024	Class photos
Friday 7 <sup>th</sup> June 2024 – Friday 14 <sup>th</sup> June 2024	Year 6 Bikeability
Wednesday 26 <sup>th</sup> June 2024	EYFS sports morning 9:30-11am
Wednesday 26 <sup>th</sup> June 2024	Year 3 and 4 sports afternoon 1.30-3pm
Thursday 27 <sup>th</sup> June 2024	Year 1 and 2 sports morning 9:30-11am
Thursday 27 <sup>th</sup> June 2024	Year 5 and 6 sports afternoon 1.30-3pm
Monday 1 <sup>st</sup> July 2024	Thurrock Infant Music Festival
Friday 19 <sup>th</sup> July 2024	Last day of term for pupils
Monday 22 <sup>nd</sup> and Tuesday 23 <sup>rd</sup> July 2024	INSET day – no school for pupils.

# Do you need support?



## East Tilbury Primary Schools Online Pastoral Support.

We are very excited to launch our new Pastoral service to our school community. From today you can access support by completing a simple and quick online form.

We have been working hard over the last few months to set up extra support for our families which is very much needed at this challenging time. If you require support, then please do not hesitate to reach out. We are hoping this service will be a fantastic addition to the support we can provide for our school community. Please reach out if you need anything, we are always here to offer you support.

To make the process simple we have created a QR Code (at the top of the poster) which you can just scan, and this will take you directly to the form.

## WE CAN HELP WITH

- Food
- Wellbeing
- Trip Payments

## FOR MORE INFORMATION VISIT:

[www.easttilburyprimary.thurrock.sch.uk](http://www.easttilburyprimary.thurrock.sch.uk)

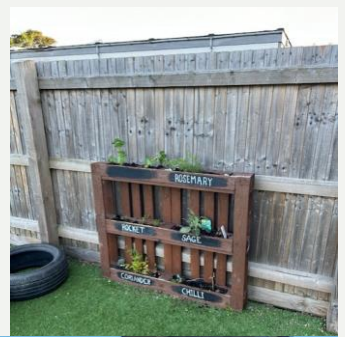
Our school uniform shop is currently closed due to our stock room being affected by RAAC. If you need support with school uniform please visit the 180 project in Chadwell St Mary.

[mycommunitychurch.org.uk/community/projects](http://mycommunitychurch.org.uk/community/projects)

# Class News

## Reception

Yesterday evening some of our amazing staff stayed late after school to work on the EYFS outdoor area. This morning the children have had an excellent morning exploring all the new items in their environment.



## Year One

In year one science this week, we started our lesson by observing our sunflower plant and measured it to see how much it has grown. They have grown lots since we first planted them at the beginning of the term. We then wrote our findings in our plant diary. We learnt about the word 'compare'. We used photographs of different plants and trees that we have previously learnt about, to compare the similarities and differences of them. After this, we then sorted them into groups, fruit plants, deciduous trees, evergreen trees, garden plants and wild plants.



# Class News

## Year Two

This week in science we have been learning about good hygiene. We carried out an experiment to test the best way to wash our hands. We used glitter and pretended they were germs. First, we covered our hands with glitter. We removed the glitter, and used only water, paper towel, and soap and water. We discovered that soap and water removed all of the glitter.

In our computing lessons, we have been making music using a program called Chrome Music Lab. We changed the tempo and instruments to make happy and sad music.



## Year Three

We have enjoyed our last week of half-term 5.

On Monday, we finished designing and creating all the features for our 3D castles.

For English this week, we have written our non-chronological report about earthquakes. We used all our research and sentences from our lessons to support our independent piece of writing.

During Maths this week, we have been using coins and notes to add and subtract amounts of money. We found a range of ways to make equivalent amounts of money.

In Science this week, we measured and watered our sunflowers. We studied the life cycle of plants and looked at the different stages of their growth.

During our Geography lesson, we began researching more about the Amazon Rainforest. We worked in pairs to use Chromebooks to research about the animals that live in the rainforest. We made fact-files about the different animals.

We hope you all have a lovely break and a good rest, ready for our last half-term in Year 3!

# Class News

**Did you know?**

The English word for paper comes from the word papyrus.

## Year Four

In year 4, we made papyrus like the ancient Egyptians did! The papyrus plant is harder to come by these days, so we followed the process but used paper and PVA glue instead. We then used oil pastels, aqua pencils and acrylic pens to create our own scrolls; these were influenced by the topic of Ancient Egypt and our personal favourite things.

Step 1: Coffee stain!



Leave to dry!



Step 2: cut or tear into strips approx. 2cm wide.



Step 3: Immerse each strip into the pot of slightly diluted pva glue.



Ensure, the strip is complete covered, remove excess glue.



Step 4: Lay the strips side by side, overlapping them slightly.



Step 4: apply another layer of strips at a right angle to the first layer.

Time to create masterpieces!

Leave to dry!



# Class News

## Year Five

This week in year five, we have begun our work based on desert warfare in Gallipoli during the First World War. We explored the failed campaign there and how the climate and physical features of the landscape impacted on the soldiers. In music, we rocked on to some Bon Jovi and their hit 'Livin on a Prayer'.

We are coming to an end on our current art topic, where this week, we explored the architecture of Friedensreich Hundertwasser, with the end-result being an oil pastel drawing.

## Year Six

Last week for curriculum day Year 6 explored how to use different artistic techniques with clay to represent memories. First, we learned about an artist called Louise Nevelson and how she used assemblage within her sculptures. We then used her work as inspiration for our own: using shapes to represent memories and developing these into a clay memory sculpture. This is something they will be able to take home to remember their time in primary school forever!

This week children have also been auditioning for our end of year performance: 'School-O-Vision Song Contest'. They have all been extremely enthusiastic and we can't wait to get started with rehearsal.





# Reach for the Stars



Our 'Stars of the Week' are the children that have gone over and above in their efforts. We are very proud of them for their achievements and thought they deserved an extra-special mention!

RJG	Louis	For being a great listener whilst on the carpet.
REC	Joshua S	For his amazing maths.
RES	Hallie	For being a kind and thoughtful friend.
1GC	Evie	For working hard to use her sounds in English.
1FK	Monica	For her amazing effort in English this week.
1BA	Sophia	For her amazing effort and focus during phonics lessons this week.
2BG	Esmae P	For showing hard work and positive behaviour towards learning.
2RS	Jackson	For his lovely diary entry about the Great Fire of London.
2CH	Annie	For her amazing effort when writing a diary entry about the Great Fire of London.
2RM	Sophie	For contributing some brilliant ideas during her English lessons this week.
3VP	Amber G	For working consistently hard across the curriculum.
3ML	Bonnie-Rose	For her improvement and focus on her learning, across all subjects.
3SG	Amir	For having a great first week at East Tilbury Primary School.
3SA	Nikola B	For consolidating her knowledge effectively in English.
	Victoria L	For achieving great outcomes in the writing of her non chronological report.
4CP	Jay-Royce L	For working hard throughout the week
4NM	Janet	For always demonstrating the co-operative values, especially Solidarity and Equality
4JP	Micheal	For making a sustained effort to improve the presentation and content of his writing.
5AB	Callum	For his engagement with our WW1 topic
5TH	Perri	For producing some great independent writing.
5MR	Quinn	For always being a kind, caring and considerate class member and consistently trying her best.
6LC	Aubreigh W	For writing an imaginative 'Warning Story'.
6NB	Kycson P	For his outstanding drama performances in auditions for our end of year production.
6JM	Joshua D	For putting a lot of effort and thought into starting to organise a charity event.



# Maths Marvels



All pupils at East Tilbury Primary have logins for Times Tables Rockstars and are able to log on at home to practice their times tables.

19th May - 24 May 2024

6JM 144

6LC 12

6NB 11

19th May - 24 May 2024

5AB 2

5TH 1

5MR 0

19th May - 24 May 2024

3SG 279

3VP 58

3SA 58

3ML 43

19th May - 24 May 2024

2RS 3

2RM 2

2CH 2

2BG 0

19th May - 24 May 2024

4NM 197

4JP 3

4CP 2

## Keep in Touch



Our school office is open to receive calls between 8:30am and 3pm.

Tel: 01375 846181

Email: [office.etp@osborn.e.coop](mailto:office.etp@osborn.e.coop)

East Tilbury Primary School

Princess Margaret Road  
East Tilbury, Essex, RM18 8SB



We are also regularly updating our Facebook page and Twitter feed. Log on and have a look!



Twitter:  
[@EastTPrimary](https://twitter.com/EastTPrimary)



At East Tilbury Primary School our Designated Safeguarding Leads (DSL) are:

- Mrs Bates
- Mrs Dawson

Due to the size of the school, we have the following designated staff who can deputise in the Headteacher's absence:

- Mr Gowland
- Mrs Jarvis
- Mrs Mylam
- Mrs Allen
- Mrs Sheridan

Pupils can contact any of our Safeguarding Team during the school day.

Worried about a child? You can phone or write to MASH about your concerns. Phone immediately if you believe it is urgent.

**Thurrock MASH (Multi Agency Safeguarding hub), Civic Offices, New Road, Grays, Essex, RM17 6SL, Tel: 01375 652802.**

**Emergency Duty Team (for out of hours) 01375 372468. · Police Child Abuse Investigation Team 01277 266822 or call 999 if you are concerned a child needs immediate protection. · Childline 0800 11 11 [www.childline.org.uk](http://www.childline.org.uk) · NSPCC 0808 800 5000**

**[www.nspcc.org.uk](http://www.nspcc.org.uk); [www.facebook.com/nspcc](https://www.facebook.com/nspcc)**



**Tues 14:00-16:00:** St. Mary's Church hall, St. Mary's Church, Dock Rd, Grays, RM17 6EX.

**Tues 11:00-13:00:** St. John the Baptist Church, Tilbury, Dock Road, Tilbury, RM18 7PP

**Weds 11:00-13:00:** Gateway People's Centre, High Street, Stanford Le Hope, Essex, SS17 0EY

**Weds 13:00 -14:30:** Sockets Heath Baptist Church, Premier Avenue, Grays, RM16 2SB

**Thurs 11:00-13:00:** St. Francis Centre, Somerset Rd, Linford, SS17 0QA

**Thurs 11:00-13:00:** All Saints Church of England, Foyle Drive, Sth Ockendon, RM15 5HF

**Fri 10:12:00:** St. Stephen's Church of England, London Rd, Purfleet, RM19 1QD





**Sat 09:30-11:30:** Emmanuel Church of England, Sleepers Farm Rd, Chadwell St. Mary, RM16 4TP

**Sat 10:00-12:00:** All Saints Church of England, Foyle Drive, Sth Ockendon, RM15 5HF

**Sat 10:00-12:00:** Christian Gates of Praise International Christian Centre, 79-83 London Rd, RM175YF

September 2023							October 2023							November 2023							December 2023						
M	T	W	T	F	S	S	M	T	W	T	F	S	S	M	T	W	T	F	S	S	M	T	W	T	F	S	S
				1	2	3						1				1	2	3	4	5					1	2	3
4	5	6	7	8	9	10	2	3	4	5	6	7	8	6	7	8	9	10	11	12	4	5	6	7	8	9	10
11	12	13	14	15	16	17	9	10	11	12	13	14	15	13	14	15	16	17	18	19	11	12	13	14	15	16	17
18	19	20	21	22	23	24	16	17	18	19	20	21	22	20	21	22	23	24	25	26	18	19	20	21	22	23	24
25	26	27	28	29	30		23	24	25	26	27	28	29	27	28	29	30				25	26	27	28	29	30	31
							30	31																			
January 2024							February 2024							March 2024							April 2024						
M	T	W	T	F	S	S	M	T	W	T	F	S	S	M	T	W	T	F	S	S	M	T	W	T	F	S	S
1	2	3	4	5	6	7				1	2	3	4					1	2	3	1	2	3	4	5	6	7
8	9	10	11	12	13	14	5	6	7	8	9	10	11	4	5	6	7	8	9	10	8	9	10	11	12	13	14
15	16	17	18	19	20	21	12	13	14	15	16	17	18	11	12	13	14	15	16	17	15	16	17	18	19	20	21
22	23	24	25	26	27	28	19	20	21	22	23	24	25	18	19	20	21	22	23	24	22	23	24	25	26	27	28
29	30	31					26	27	28	29				25	26	27	28	29	30	31	29	30					
May 2024							June 2024							July 2024							August 2024						
M	T	W	T	F	S	S	M	T	W	T	F	S	S	M	T	W	T	F	S	S	M	T	W	T	F	S	S
		1	2	3	4	5					1	2		1	2	3	4	5	6	7				1	2	3	4
6	7	8	9	10	11	12	3	4	5	6	7	8	9	8	9	10	11	12	13	14	5	6	7	8	9	10	11
13	14	15	16	17	18	19	10	11	12	13	14	15	16	15	16	17	18	19	20	21	12	13	14	15	16	17	18
20	21	22	23	24	25	26	17	18	19	20	21	22	23	22	23	24	25	26	27	28	19	20	21	22	23	24	25
27	28	29	30	31			24	25	26	27	28	29	30	29	30	31					26	27	28	29	30	31	

<b>Autumn Term:</b>	Monday 4 September 2023 – Wednesday 20 December 2023 <i>Half Term 23 October – 3 November</i>	73 days
<b>Spring Term:</b>	Thursday 4 January 2024 – Thursday 28 March 2024 <i>Half Term 19 February – 23 February</i>	56 days
<b>Summer Term:</b>	Monday 15 April 2024 – Tuesday 23 July 2024 (22-23 July twilight inset payback) <i>Half Term 27 May – 31 May, and May Bank Holiday – 6 May</i>	66 days
		195 days

	School Holiday
	Additional autumn half term
	Inset days, schools closed to students
	Trust conference, schools closed to students