

School News

A MESSAGE FROM THE SENIOR LEADERSHIP TEAM

Dear Parents and Carers,



It has been another busy week in school, as we all build up to Christmas!

Reception and KS1 - Christmas performances

This week, the reception and KS1 children delivered a large helping of Christmas joy as they performed to their parents. A big thank you to all the parents/carers who came to see their children perform and a special thanks to staff for the time and care put into preparing the children for their performances. Most importantly, a big well done to all the children!

Governor Visits to school

Over the last few weeks, we have been delighted to welcome our governing body members into school for visits around Health & Safety, Curriculum, safeguarding and SEND. The governing body play a vital role in supporting the school and it was pleasing for us as leaders to be able to show them the progress the children have been making in their learning so far this term.

Weather

We continue to have cold weather and as such it is important that the children are wearing warm coats, vests, hats, gloves, and scarves to school. We wouldn't want any children missing out on fresh air time outside because they are too cold!

Christmas PFA Craft

Thank you to the PFA volunteers who gave up their time to come and create a variety of Christmas crafts across both KS1 and KS2. The children enjoyed their craft activities as did the teachers!

Christmas Holiday

As per our school calendar, the last day of term will be **Friday, 20th Dec** with the children returning to school on **Tuesday 7th January 2025**.

We wish you all a pleasant weekend ahead.

The Leadership Team

Upcoming Events

Christmas events at ETP



- ❖ 29/11 – PFA Christmas Fayre after school - plenty of Christmas family fun! – see PFA letter for details
- ❖ 4/12 - Christmas pantomime - performance to the children during schooltime
- ❖ 10/12 - Lower school (Reception &KS1) Christmas performances 9.30am and 1.30pm
- ❖ 11/12 – PFA Christmas craft with KS2 in school
- ❖ 11/12 – Lower school (Reception &KS1) Christmas performances 9.30am and 1.30pm
- ❖ 12/12 – PFA Christmas craft with KS1 in school
- ❖ 12/12 – National Christmas jumper day - children can wear a Christmas jumper to school (normal uniform with a Christmas jumper) - voluntary contribution of £1 towards 'Save the children' charity.
- ❖ 16/12 – Christmas assembly hosted by Rev. Michelle in school
- ❖ 18/12 – Christmas dinner day for the children in school
- ❖ 20/12 – last day of term – children can wear non-uniform (Christmas themed if they like!)

Important Information

If your child has an injury and has been given medical advice that we need to follow as a school, please bring them to the school office for 8.15am on their first day back at school following the injury so that we can complete a risk assessment. Thank you for your cooperation.

Absence

If your child is too ill to attend school, this must be reported to us by no later than **9.00am**. Please telephone the school, press one and leave a message on the voicemail box stating your child's full name, class, the reason for absence and when we can expect them to return to school (if known).

Home Visits will be carried out for any child that is absent for 3 or more school days without reason.

Thank You



Thank you for the donations to save
the Children on Christmas Jumper Day.
We raised £334 for Save the Children.

We need you...



Please label all children's school uniform. This helps us return lost property to the correct child and prevents parents from having to replace missing uniform as often. This is particularly important as the weather is getting colder and children are beginning to wear jumpers/cardigans to school.

We are missing a significant number of reading books. If you have any left at home (whatever condition) from last academic year, please return them.
Thank you

Please be reminded that pupils should not be wearing jewellery to school. Children with pierced ears may wear stud earrings but hoops are not permitted.
Thank you for your support

Year 1 need newspaper and cereal boxes for their work on sculptures next term. If you have any that you are happy to donate, please pass them to the Year 1 teachers.
Thank You

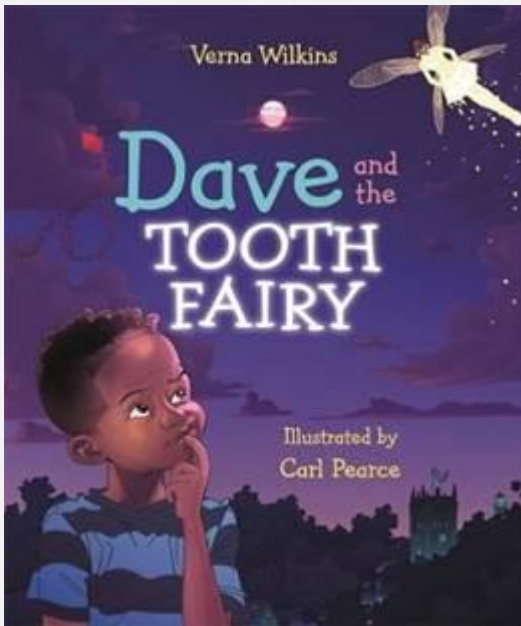
We are continually updating our OPAL resources and would gladly accept donations of:

- Tennis balls
- Footballs
- Bats
- Dressing up clothes
- Colouring books
- Crayons
- Big cars
- Lego



Recommended Reads

Each week we will be recommending great books that you can share with your children.



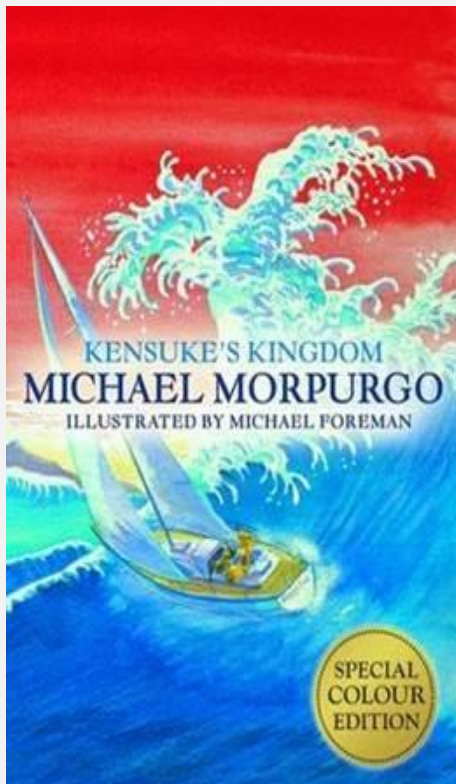
Dave and the Tooth Fairy

Author: Verna Wilkins

Illustrator: Carl Pearce

Dave is thrilled when he finally gets his first wobbly tooth although, despite much wiggling and wagging, it seems reluctant to come out.

One morning, when Dave sneezes his biggest ever sneeze, the tooth shoots out of his mouth, catapults across the room and completely disappears. He conducts an extensive search, even looking down the side of the sofa where everything hides, but to no avail.



Kensuke's Kingdom

Author: Michael Morpurgo

Illustrator: Michael Foreman

Publisher: Farshore

Michael is hungry, lonely and scared when he is washed up on a seemingly deserted island. He soon discovers another inhabitant - Kensuke, a former Japanese soldier - who, although initially unfriendly, provides Michael with food and water. Gradually, a strong bond develops between the two castaways. This is a beautifully written tale of an exceptional friendship which survives beyond the boundaries of culture and language.



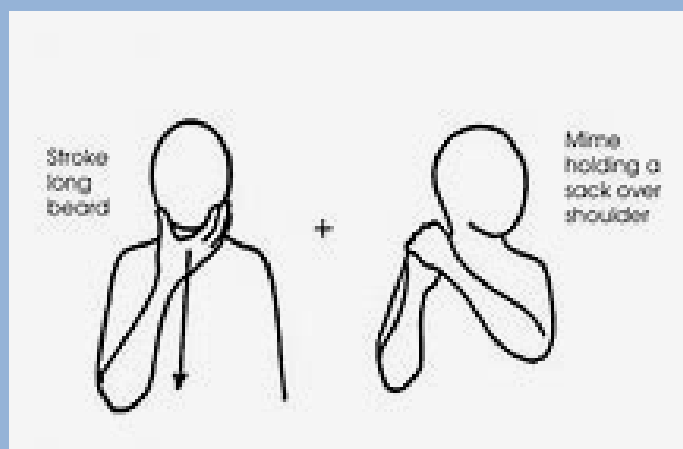
SEND in Focus

Makaton Signs of the week:

Why not speak with your child and see what signs they can remember from what they've already been taught?



Christmas



Santa



SEND in Focus



This is a sensory friendly event



AUTISM CHRISTMAS FUN DAY

FREE ENTRY

Saturday
14th
December

The Beehive
West Street
Grays, RM17 6ST

12:00 pm to
1.45 pm



Snacks
Games
Santa's Grotto
Music



Please send us email to book
your place:
gina@thurrockcoalition.co.uk



SEND in Focus

East of England SEND Network for Children and Young People.



Children and young people aged 5 to 25 with SEND are invited to join the East of England SEND Network. The network provides a space for young individuals from across the region to discuss matters important to them, share their thoughts, have their voices heard, and make friends.

Meetings will be initially held online every 1 to 2 months. Ideas from young participants so far regarding the network's focus include disability awareness, promoting differences in schools, understanding diverse needs, local and social opportunities, developing skills to make new friends, improving mental health in young people, and internet safety.

For further questions please email kierran.pearce@essex.gov.uk

Diary Dates

| | |
|--|--|
| Monday 16 th December 2024 | Christmas Assembly hosted by Rev. Michelle in school |
| Wednesday 18 th December 2024 | Christmas Dinner Day (Children can wear Christmas jumpers) |
| Friday 20 th December 2024 | Non-Uniform Day |
| Friday 20 th December 2024 | Last day of Autumn Term |
| Monday 6 th January 2025 | Inset Day |
| Tuesday 7 th January 2025 | First day of Spring Term |

Do you need support?

East Tilbury Primary Schools Online Pastoral Support.

We are very excited to launch our new Pastoral service to our school community. From today you can access support by completing a simple and quick online form.

We have been working hard over the last few months to set up extra support for our families which is very much needed at this challenging time. If you require support, then please do not hesitate to reach out. We are hoping this service will be a fantastic addition to the support we can provide for our school community. Please reach out if you need anything, we are always here to offer you support.

To make the process simple we have created a QR Code (at the top of the poster) which you can just scan, and this will take you directly to the form.

WE CAN HELP WITH

- Food
- School Uniform
- Hygiene Products
- Wellbeing

FOR MORE INFORMATION VISIT:

www.easttilburyprimary.thurrock.sch.uk



Class News

Reception

Wow what a week we have had this week in Reception! We hope you all enjoyed coming to see the children in the Nativity performances, they all did an incredible job, and we are very proud of them. The children have all worked so hard on learning the words to the songs along with the actions and following all the directions.

In Phonics we have been working on recapping the Phase 2 sounds that each class were finding difficult and trying our best to hear all of the sounds within words.

We have been enjoying a range of Winter and Christmas activities across the curriculum and have been getting very excited for Christmas!



Year One

This week Year 1 made us really proud with their efforts in the Christmas Nativity Production. They have tried hard over the last few weeks to learn the words to the songs, and it was a pleasure to see them singing and dancing during all four shows. Well done Year One.



Class News

Year Two

After weeks of rehearsals, EYFS and KS1 performed their Nativity in four separate performances. The Year 2 team are incredibly proud of the hard work from all children this half term to bring together something that was truly wonderful. The children put on a brilliant show and most definitely spread some Christmas cheer.

In English this week, we have been busy completing our independent writing focused on our own version of the George and Dragon story. In Art, we have been pressing our own designs focused on the theme 'journeys' into polystyrene boards. The children then used these to create their own colourful prints, thinking carefully about layering.

Year Three

This week in English, we have been embarking on an exciting journey to create the ultimate dessert advert! We've delved into the key features of compelling adverts and explored some mouth-watering examples that have inspired our own delicious creations. From tantalising taglines to eye-catching visuals, our students are brimming with fantastic ideas for their scrumptious specials!

In maths, we have been diving into the exciting world of written methods for addition and subtraction! With daily practice of column addition and subtraction, we've encountered some challenges, but guess what? Our confidence is soaring!

On Thursday, we embraced the festive spirit with Christmas Jumper Day! Our talented year 3 had an absolute blast recording their version of the classic festive hit, "Santa Claus is Coming to Town." Not only did we learn the words, but we also mastered the Makaton signs, making this experience even more special!

We enjoyed a productive Curriculum Day discovering the art of making chutney. With a focus on developing practical skills, everyone had the chance to practice their chopping techniques while creating delicious homemade chutneys. Each pupil designed their own labels for the jars, adding a personal touch to their creations.

Class News

Year Four

Here's a roundup of the exciting learning activities Year 4 has been up to this week:

The children have enjoyed interpreting and creating their own visual data representations.

Maths

This week, we wrapped up our work on multiplication and division, consolidating key skills that will support future topics. We have also begun exploring data representation, diving into line graphs, bar charts, and pictograms

Our classroom has been filled with melodies as the children practised their class songs. These have been recorded, and we are thrilled to announce that all recordings will be compiled into a special presentation next week. Stay tuned for the final product!

English

In English, our focus has been on grammar. The children have tackled:

- Parenthesis: Learning how to add extra information to sentences.
- Speech: Practising how to punctuate direct speech correctly.
- Fronted adverbials: Understanding how to start sentences in interesting ways to enhance their writing.

Art

In Art, we completed our abstract prints. The students etched intricate designs into surfaces that revealed vibrant wax crayon layers hidden beneath black paint. Their creativity and attention to detail have been remarkable!

Reading Skills

In reading, the children have been answering questions about Christmas-themed texts, developing comprehension skills while getting into the festive spirit.

It's been a busy and rewarding week in Year 4. Thank you for your continued support. We're looking forward to sharing more of the children's work with you as we round off the term.

Warm wishes,

The Year 4 Team

Class News

Year Five

Year 5 have officially kicked off the week in the festive season! In English, we began writing our Christmas narrative based on The Snowman. They wrote their stories and had the chance to peer assess one another's work. This enables them to learn how to give constructive feedback whilst demonstrating our cooperative feedback of solidarity as each pupil has good comments for one another.

In Maths, we are continuing with our unit of multiplication and division. Pupils explored multiplying two 2 digit numbers using long multiplication. These skills were extended to multiplying a 3- or 4-digit number by a 2-digit number and interpreting the question once these were presented in worded form.

The PFA also came to support the pupils to create a Christmas present for a loved one, while we sang Christmas carols.

We enjoyed rehearsing for our Christmas song and celebrated the season later on in the week on Christmas jumper day.

At the end of the week, we enjoyed a curriculum enrichment day. The focus was on science, and we explored the use of motors in a hair dryer or boat based on models the pupils made themselves. Having designed their motorised product, they were able to test out their models and create a simple circuit. They evaluated their designs and shared these with their peers.

As always, we encourage pupils to try to access the home learning platforms such as TTRS and MyMaths. When homework is set, it is usually a paper hand copy. In terms of reading, pupils should have access to an allocated banded book or reading for pleasure book (from home or school).

Alternatively, Active learn (Bug Club) is available for online reading books. Login details are located at the front of their reading records; however, pupils can get a physical reading book from their bookcases in class; any queries please feel free to speak to any member of the Year 5 team.

We wish you all a well-rested, Christmas break.

Class News

Year Six

This week we are building up to the end of term. Letters to encourage Grinch to stop being such a Scourge, and to join in with the Christmas festivities in Whoville, have been planned ready to write. Percentages have been investigated ready for those Boxing Day sales (really just for mathematics purposes, but every little helps). We took extra time to develop epic, final light art pieces – which you can see below. We wrote up our findings from our Geography fieldwork last week. And finally, for our Curriculum Enrichment Day, we have designed and sewn miniature waistcoats for teddies or elves. Look out for the Christmas song (*Rockin' Around the Christmas Tree*) on our social media channels over the coming days.





Reach for the Stars



Our 'Stars of the Week' are the children that have gone over and above in their efforts. We are very proud of them for their achievements and thought they deserved an extra-special mention!

| | | |
|-----|--------------|--|
| RBG | Maelie | For having a positive attitude and coming into school with enthusiasm. |
| RES | Isabella-Rae | For singing beautifully throughout the nativity performances and during our class song. |
| RFK | Felicity | For her beautiful singing throughout the nativity performance. |
| 1BA | Charlie | For his amazing effort in the school nativity. |
| 1EC | Poppy H | For her effort in the nativity. |
| 1LD | Poppy O | For always having a positive attitude and for being a lovely friend. |
| 2RM | Jack-Junior | For being a brilliant director throughout the Nativity performances. |
| 2CH | All of 2CH | For their amazing effort in the school nativity. |
| 2MF | All of 2MF | For their amazing effort in the school nativity. |
| 2BG | All of 2BG | For their amazing effort in the school nativity. |
| 3ML | Kayson | For a positive attitude this week and joining in a class discussion. |
| 3RS | Eddie | For great effort this week to improve the presentation of his work. |
| 3SG | Jacob M | For his amazing effort and enthusiasm in maths this week. |
| 3VP | Emma | For improving her learning behaviours and trying hard in all lessons. |
| 4CP | Sully O'H | For his effort during his newspaper report. |
| 4KC | Myllen E | For showing kindness to her peers and helping them when they needed support. |
| 4MR | Hannah V Z | For showing self-responsibility in her learning of new maths techniques. |
| 5NM | Antoinette | For her positive attitude and commitment to all areas of learning, not shying away from challenges and attempting all tasks. |
| 5SA | Dulcie K | For working hard in Maths and showing improvement in her writing. |
| 5TH | Georgia | For her attention to detail in her independent write. |
| 6AB | Katie C | For working hard and developing independence in maths lessons. |
| 6LC | Bryce W-D | For Solidarity, helping others in maths lessons. |
| 6NB | Keira S | For her solidarity, supporting her peers with percentages. |



Maths Marvels



All pupils at East Tilbury Primary have logins for Times Tables Rockstars and are able to log on at home to practice their times tables.

9th December - 13 December 2024

5NM 1176

5SA 148

5TH 22

9th December - 13 December 2024

1LD 24

1BA 19

1FK 0

1EC 0

9th December - 13 December 2024

2MF 50

2CH 0

2SBG 0

9th December - 13 December 2024

3RS 171

3SG 163

3ML 78

3VP 16

9th December - 13 December 2024

4CP 131

4MR 25

4KC 15

9th December - 13 December 2024

6NB 1861

6LC 1709

6AB 781

10 Top Tips for Parents and Educators

SAFETY OVER THE FESTIVE SEASON

The holiday season, marked by Christmas and New Year, brings joy and togetherness but also presents unique safety challenges for children, families and educators. From busy holiday shopping, traveling and family gatherings to managing digital activity during school breaks, staying safe during this period requires heightened awareness. This guide offers practical tips to help families and educators maintain a more secure and fulfilling festive period.

1 MONITOR DIGITAL ACTIVITY

Children spend more time online during school holidays, increasing exposure to potential dangers such as cyberbullying, inappropriate content and online predators. Balancing screen time, avoiding harmful websites and ensuring children engage positively online can be difficult without proper monitoring tools. Set clear boundaries, encourage open discussions about online safety and use parental controls to manage content exposure and screen time effectively. Regular check-ins and positive reinforcement around digital habits encourage safe online behaviour.

2 PRACTICE FIRE SAFETY PROTOCOLS

The incidence of house fires increases during Christmas due to greater use of candles, cookers and electrical decorations. Open flames, electrical overloads and the need for quick response plans can make fire safety challenging. Ensure smoke detectors are operational, keep fire extinguishers on hand and teach children how to respond in case of a fire emergency. Avoid leaving cooking unattended and use fire-safe candles to prevent mishaps.

3 CREATE TRAVEL SAFETY PLANS

More families tend to travel during the holidays, resulting in busier roads, increased traffic accidents and weather-related hazards. Weather conditions, road rage, fatigue and busy airports can all compromise travel safety. Pack emergency kits and adhere to seatbelt laws. Plan routes in advance and allow extra travel time to avoid rushing and mitigate risks on busy roads.

4 BEWARE OF ALLERGIES

Holiday meals often involve many foods that may contain allergens. Cross contamination, unclear labelling and lack of allergy-friendly options can lead to severe reactions. Communicate any allergy needs to hosts, provide safe food alternatives and carry necessary medications like antihistamines or EpiPens. Teaching children how to advocate for themselves and recognise dangerous foods also contributes to safer celebrations.

5 PREVENT THE SPREAD OF ILLNESS

Cold weather and seasonal socialising can increase the spread of viruses like flu and COVID-19. Crowded gatherings, schools out of session and frequent travel can lead to higher infection risks. Emphasise hygiene, encourage vaccination, disinfect surfaces and isolate symptomatic individuals. Communication with children about proper hygiene practices is essential to reduce the spread of illness.

6 STAY VIGILANT ON THE ROAD

Increased holiday traffic heightens the risk of accidents for both drivers and pedestrians. Distracted driving, pedestrian safety and inclement weather can complicate road safety. Encourage pedestrian safety practices, avoid distracted driving and never drive under the influence.

7 MAINTAIN SAFE DECORATIONS

Festive decorations such as Christmas lights and candles can pose electrical, fire and choking hazards if mishandled. Frayed wires, toppling Christmas trees, small ornaments and open flames can be difficult to control, especially in busy households with children. Inspect and maintain decorations, secure Christmas trees, place fragile or small items out of reach and ensure candles are never left unattended. Testing smoke alarms and using flame-retardant decorations can significantly reduce risks.

8 SET BOUNDARIES FOR GIFTS

Some toys and gadgets can present choking, sharp-edge or safety risks, particularly for young children. Ensuring that gifts meet safety standards and are age appropriate can be complex with so many options available. Inspect all toys carefully and ensure any tech devices have parental controls. Setting expectations around safe gift use and discarding packaging that poses a risk also helps to prevent accidents.

9 ADDRESS STRESS & FATIGUE

Holiday pressures can lead to burnout, which affects both physical and mental health. Overpacked schedules and a lack of downtime can cause stress and fatigue, leading to accidents or poor decision making. Incorporate rest, maintain regular routines and seek support to reduce stress. Encourage activities that promote relaxation to create a healthier, happier holiday experience for everyone.

10 DRINK RESPONSIBLY

Alcohol is commonly present at holiday events, raising concerns about safety and supervision. Excessive alcohol consumption can lead to accidents, impaired judgment and lack of supervision for children. Designate responsible adults, limit consumption and provide transportation alternatives for guests. Teaching moderation and modelling responsible behaviour in front of children ensures that celebrations remain positive and secure.

Meet Our Expert

James Whelan is a chartered health and safety consultant with 10 years of experience in promoting family and community safety. Specialising in risk assessment and preventative strategies, he has worked with educational institutions, public health agencies and community groups to deliver safety education and training.



#WakeUpWednesday

The National College®

Source: See full reference list on guide page at: <https://nationalcollege.com/guides/safety-over-the-festive-season>

BE BRIGHT & BE SEEN

this winter



Now that the clocks have gone back and it's getting darker earlier on, it's more important than ever to make sure you can be seen when you're out and about near roads.

There are loads of ways to be seen and stay safer
- so check over the page for some top tips!

5 top tips on how to **BE BRIGHT & BE SEEN**

- 1** Brightly coloured or fluorescent clothing shows up well in daylight and at dusk when you're heading to and from school.
- 2** If you're out and about when it's dark, wear reflective gear to make sure you can be seen in car headlights. Reflective vests, sashes or wristbands work well. Remember, fluorescent clothing doesn't work after dark!
- 3** Don't forget to accessorise! Even small items such as clip-on reflectors, armbands and stickers on your outfit or school bag are a great way to improve your visibility.
- 4** If you like to cycle, remember that it's the law to have clean and working lights at night (white at the front, red at the back), as well as a rear reflector. It's good to fit spoke reflectors too.
- 5** Of course, 'Being Bright' isn't the only way to stay safer. If you're out at night, choose routes and crossing places that are well lit and remember to always use the Green Cross Code.

For more road safety tips, games and videos, visit the Tales of the Road website at www.direct.gov.uk/talesoftheroad

**Be Bright,
Be Seen**

THINK

Keep in Touch



Our school office is open to receive calls between 8:30am and 3pm.

Tel: 01375 846181

Email: office.etp@osborne.coop

East Tilbury Primary School

Princess Margaret Road
East Tilbury, Essex, RM18 8SB



We are also regularly updating our Facebook page and Twitter feed. Log on and have a look!



Twitter:
[@EastTPrimary](https://twitter.com/EastTPrimary)



At East Tilbury Primary School our Designated Safeguarding Leads (DSL) are:

- Mrs Dawson

Due to the size of the school, we have the following designated staff who can deputise in the Headteacher's absence:

- Mr Gowland
- Mrs Jarvis
- Mrs Mylam
- Mrs Allen
- Mrs Sheridan

Pupils can contact any of our Safeguarding Team during the school day.

Worried about a child? You can phone or write to MASH about your concerns. Phone immediately if you believe it is urgent.

Thurrock MASH (Multi Agency Safeguarding hub), Civic Offices, New Road, Grays, Essex, RM17 6SL, Tel: 01375 652802. Emergency Duty Team (for out of hours) 01375 372468. · Police Child Abuse Investigation Team 01277 266822 or call 999 if you are concerned a child needs immediate protection. · Childline 0800 11 11 www.childline.org.uk · NSPCC 0808 800 5000 www.nspcc.org.uk; www.facebook.com/nspcc



Tues 14:00-16:00: St. Mary's Church hall, St. Mary's Church, Dock Rd, Grays, RM17 6EX.

Tues 11:00-13:00: St. John the Baptist Church, Tilbury, Dock Road, Tilbury, RM18 7PP

Weds 11:00-13:00: Gateway People's Centre, High Street, Stanford Le Hope, Essex, SS17 0EY

Weds 13:00 -14:30: Sockets Heath Baptist Church, Premier Avenue, Grays, RM16 2SB

Thurs 11:00-13:00: St. Francis Centre, Somerset Rd, Linford, SS17 0QA

Thurs 11:00-13:00: All Saints Church of England, Foyle Drive, Sth Ockendon, RM15 5HF

Fri 10:12:00: St. Stephen's Church of England, London Rd, Purfleet, RM19 1QD

Sat 09:30-11:30: Emmanuel Church of England, Sleepers Farm Rd, Chadwell St. Mary, RM16 4TP

Sat 10:00-12:00: All Saints Church of England, Foyle Drive, Sth Ockendon, RM15 5HF

Sat 10:00-12:00: Christian Gates of Praise International Christian Centre, 79-83 London Rd, RM175YF

| September 2024 | | | | | | | October 2024 | | | | | | | November 2024 | | | | | | | December 2024 | | | | | | |
|----------------|----|----|----|----|----|----|---------------|----|----|----|----|----|----|---------------|----|----|----|----|----|----|---------------|----|----|----|----|----|----|
| M | T | W | T | F | S | S | M | T | W | T | F | S | S | M | T | W | T | F | S | S | M | T | W | T | F | S | S |
| | | | | | | 1 | | 1 | 2 | 3 | 4 | 5 | 6 | | | | | 1 | 2 | 3 | | | | | | | 1 |
| 2 | 3 | 4 | 5 | 6 | 7 | 8 | 7 | 8 | 9 | 10 | 11 | 12 | 13 | 4 | 5 | 6 | 7 | 8 | 9 | 10 | 2 | 3 | 4 | 5 | 6 | 7 | 8 |
| 9 | 10 | 11 | 12 | 13 | 14 | 15 | 14 | 15 | 16 | 17 | 18 | 19 | 20 | 11 | 12 | 13 | 14 | 15 | 16 | 17 | 9 | 10 | 11 | 12 | 13 | 14 | 15 |
| 16 | 17 | 18 | 19 | 20 | 21 | 22 | 21 | 22 | 23 | 24 | 25 | 26 | 27 | 18 | 19 | 20 | 21 | 22 | 23 | 24 | 16 | 17 | 18 | 19 | 20 | 21 | 22 |
| 23 | 24 | 25 | 26 | 27 | 28 | 29 | 28 | 29 | 30 | 31 | | | | 25 | 26 | 27 | 28 | 29 | 30 | | 23 | 24 | 25 | 26 | 27 | 28 | 29 |
| 30 | | | | | | | | | | | | | | | | | | | | | 30 | 31 | | | | | |
| January 2025 | | | | | | | February 2025 | | | | | | | March 2025 | | | | | | | April 2025 | | | | | | |
| M | T | W | T | F | S | S | M | T | W | T | F | S | S | M | T | W | T | F | S | S | M | T | W | T | F | S | S |
| | | 1 | 2 | 3 | 4 | 5 | | | | | | 1 | 2 | | | | | | 1 | 2 | | 1 | 2 | 3 | 4 | 5 | 6 |
| 6 | 7 | 8 | 9 | 10 | 11 | 12 | 3 | 4 | 5 | 6 | 7 | 8 | 9 | 3 | 4 | 5 | 6 | 7 | 8 | 9 | 7 | 8 | 9 | 10 | 11 | 12 | 13 |
| 13 | 14 | 15 | 16 | 17 | 18 | 19 | 10 | 11 | 12 | 13 | 14 | 15 | 16 | 10 | 11 | 12 | 13 | 14 | 15 | 16 | 14 | 15 | 16 | 17 | 18 | 19 | 20 |
| 20 | 21 | 22 | 23 | 24 | 25 | 26 | 17 | 18 | 19 | 20 | 21 | 22 | 23 | 17 | 18 | 19 | 20 | 21 | 22 | 23 | 21 | 22 | 23 | 24 | 25 | 26 | 27 |
| 27 | 28 | 29 | 30 | 31 | | | 24 | 25 | 26 | 27 | 28 | | | 24 | 25 | 26 | 27 | 28 | 29 | 30 | 28 | 29 | 30 | | | | |
| | | | | | | | | | | | | | | 31 | | | | | | | | | | | | | |
| May 2025 | | | | | | | June 2025 | | | | | | | July 2025 | | | | | | | August 2025 | | | | | | |
| M | T | W | T | F | S | S | M | T | W | T | F | S | S | M | T | W | T | F | S | S | M | T | W | T | F | S | S |
| | | | 1 | 2 | 3 | 4 | | | | | | 1 | | | 1 | 2 | 3 | 4 | 5 | 6 | | | | | 1 | 2 | 3 |
| 5 | 6 | 7 | 8 | 9 | 10 | 11 | 2 | 3 | 4 | 5 | 6 | 7 | 8 | 7 | 8 | 9 | 10 | 11 | 12 | 13 | 4 | 5 | 6 | 7 | 8 | 9 | 10 |
| 12 | 13 | 14 | 15 | 16 | 17 | 18 | 9 | 10 | 11 | 12 | 13 | 14 | 15 | 14 | 15 | 16 | 17 | 18 | 19 | 20 | 11 | 12 | 13 | 14 | 15 | 16 | 17 |
| 19 | 20 | 21 | 22 | 23 | 24 | 25 | 16 | 17 | 18 | 19 | 20 | 21 | 22 | 21 | 22 | 23 | 24 | 25 | 26 | 27 | 18 | 19 | 20 | 21 | 22 | 23 | 24 |
| 26 | 27 | 28 | 29 | 30 | 31 | | 23 | 24 | 25 | 26 | 27 | 28 | 29 | 28 | 29 | 30 | 31 | | | | 25 | 26 | 27 | 28 | 29 | 30 | 31 |
| | | | | | | | 30 | | | | | | | | | | | | | | | | | | | | |

| | |
|--|--|
| | School Holiday |
| | Additional autumn half term (some Thurrock schools only) |
| | Inset days, schools closed to students |
| | Trust conference, schools closed to students |
| | Bank Holidays |