



School News

A MESSAGE FROM THE SENIOR LEADERSHIP TEAM

Dear Parents and Carers,

Welcome back to the start of a new academic year here at East Tilbury Primary. It has been a great first few days back at school, welcoming new children, parents and staff to the school community and also seeing our pupils from last year moving up to their new classes. The children have settled quickly, with calm and purposeful learning happening across the school. Next week you will receive a 'Parent Termly Information Letter' that outlines the overview of your child's learning for this term. This document will also highlight resources that you might like to use at home to further enhance your child's learning. You will be able to find further information about the Curriculum on our website which gives details on the learning overviews for each subject and year group.

As you all get used to the new spaces you are dropping off and collecting your children from, please make every effort to be punctual and do make use of the many staff available to support you in these first few days of getting used to new routines.

It is strange to think that this time last year we had the enforced closure of a third of our building due to RAAC. This brought many challenges to the running of the school, but we are delighted to have our whole building back and fully operational. As you can imagine, this has been a huge undertaking and we as leaders are extremely grateful to our staff for the hard work and dedication, they have shown in getting the school ready and open. Thank you also for your understanding and support with this challenge.

Please remember that our re-arranged Summer Fete will be taking place on Friday 20th September after school. Lots more details will come through to you about this very soon!

We hope you enjoy a relaxing weekend ahead and look forward to our first full week back in school next week.

The Leadership Team

Important Information

If your child has an injury and has been given medical advice that we need to follow as a school, please bring them to the school office for 8.15am on their first day back at school following the injury so that we can complete a risk assessment. Thank you for your cooperation.

Absence

If your child is too ill to attend school, this must be reported to us by no later than **9.00am**.

Please telephone the school, press one and leave a message on the voicemail box stating your child's full name, class, the reason for absence and when we can expect them to return to school (if known).

Home Visits will be carried out for any child that is absent for 3 or more school days without reason.

Important Information

Thurrock Council secondary school admissions

If your child has just started the last year of primary education, you must now apply for a secondary school place.

Important information – applying for a secondary school place for September 2025

If your child was born between **1 September 2013** and **31 August 2014**, you must apply for a secondary school place for **September 2025**

Apply online from 2 September at thurrock.gov.uk/admissions

Go to thurrock.gov.uk/admissions and select 'Secondary school admissions'. You will be able to open an online copy of our prospectus for Thurrock primary schools, booklet called **Secondary Admission Information September 2025**, which you should read carefully before applying.

You must have an email account to apply online.

You should also try to join us online at one of the briefing sessions before you complete an application.

Three briefing sessions for parents will be held on Wednesday 18 September 2024 via webinar on the council website.

First Session: 1pm - 2pm; Second session: 4pm - 5pm; Third session: 6:30pm - 7:30pm

Go to thurrock.gov.uk/admissions and select 'Secondary school admissions' to access the webinar.

Offers will be available for applicants via your online account from **12:30am on 3 March 2025**.

Apply for a secondary school place

When making an application you can list up to six schools that you wish to apply for, in your order of preference. You can list schools outside of Thurrock – including grammar schools – if you wish.

If you are applying to any school that is religious by character, make sure you also complete their supplementary form and return it direct to the school by the closing date for applications.

If you have more than one child transferring to secondary school, you must apply separately for each child needing a place.

If you do not complete the application and return it by the closing date of **31 October 2024** you may be given a place at the nearest school with a space available, after all on-time applications have been dealt with.

If you have read all our information online and still have questions, please contact our Admissions Team by emailing school.admissions@thurrock.gov.uk or phoning on **01375 652 652**.

We need you



Year 1 Need Your Help

Calling all parents, guardians, and supporters of our wonderful Year 1 classes!

We are on the lookout for some small neutral storage baskets to help keep our classrooms tidy and organised. If you have any spare or know where we can find some, we would greatly appreciate your help!

Your contribution, big or small, will make a huge difference in creating an organised and engaging learning environment for our young learners.



Exciting News! Join Us in Enhancing Lunchtimes at Our School with OPAL 🌳 🎨 📖

Hey everyone! We're thrilled to share that we're taking our lunchtimes to the next level with our OPAL (Outdoor Play & Learning) initiative! ✨ Thanks to OPAL, our lunchtimes have already seen a positive transformation, and now, with your support, we can make them even better. 😊

🎁 Donation Wishlist:

- Prams (toy size and child size) 🧸
- Dolls & Teddy Bears (large and small) 🧸
- Lego 🧱
- Reading Books 📖
- Scooters 🛹
- Bike Helmets 🚲

Your contributions will help us create a more fun and engaging lunchtime experience for all our students.



SEND in Focus

Local Information, Advice, and Support Organisations

1

Thurrock Carers Service

Provides information, advice, and support for unpaid carers of residents of Thurrock

01375 659 172

carers@tbmind.org.uk

Facebook: Thurrock Carers

Thurrock and Brentwood Mind

Offer counselling and groupwork, IAPT and Recovery College, wellbeing activities and more

www.thurrockandbrentwoodmind.org.uk

01375 391 411

reception@tbmind.org.uk

Citizens Advice South Essex

Provide free, confidential, and impartial advice on issues including money, housing, and employment

www.citizensadvice.org.uk/local/south-essex

Telephone: 0808 278 7877

Thurrock Food Bank

In order to get help from a food bank you will need to be referred with a voucher, which can be issued by a number of local community organisations for instance, schools, GPs, and advice agencies

www.thurrock.foodbank.org.uk

info@thurrock.foodbank.org.uk

Community Pantries

There are Community Fridges and Pantries across Thurrock run by various voluntary organisations. Community pantries are designed to eliminate food waste and are not meant as a substitute for the food bank.

There are community fridges/pantries in the following locations:

[Purfleet-on-Thames Community Hub](#); [Aveley Community Hub](#); [Tilbury Hub](#); [The Beehive, Grays](#);

[Friends of Hardie Park, Stanford-Le-Hope](#); [East Tilbury Library](#)

For further details and opening times:

www.strongertogetherthurrock.org.uk/new-food-network-page/

Thurrock Healthwatch

are the independent champion for people who use health and social care services in Thurrock.

Their purpose is to understand the needs, experiences and concerns of people who use health and social care services and to speak out on their behalf.

www.healthwatchthurrock.org

01375 389 883

admin@healthwatchthurrock.org

Open Door

Housing Advice and Support Service (HASS)

give general and specialist housing advice, homelessness information and signposting to supported housing projects in the Thurrock area.

We also provide help with form filling for those who have difficulty with completing benefit applications and housing registration forms etc

www.opendoorthurrock.co.uk

01375 390 849

Thurrock LGBTQ+ Network

We are Thurrock's LGBTQ+ community network, open to all who identify as LGBTQ+. Friends and allies are welcome too.

thurrocklgbtqnetwork@gmail.com

Facebook: Thurrock LGBTQ+ Network

Thurrock Transport

Bus Pass

www.thurrock.gov.uk/bus-passes/applying-for-your-bus-pass

Thurrock Blue Badge Scheme

www.thurrock.gov.uk/.../blue-badge-disabled-parking-scheme

Local Area Coordination (LAC)

Local Area Coordinators support people who may feel vulnerable due to age, frailty, disability, or mental health needs. They will take time to get to know you, those closest to you, and your community.

localareacoordination@thurrock.gov.uk

TRUP

The Re-Use Partnership is a Thurrock based charity with a wide range of good quality pre-loved furniture and household items for sale at affordable prices.

www.trup.org.uk

01375 846 702

We Are Family

An adoption support family. Rather than offering advice we offer community.

Contact Nicole at

thurrock@wearefamilyadoption.org.uk





SEND in Focus

PATT ADHD Support Group

For families with children and young people with
ADHD and neurodiversity

Booking essential

If we need to cancel a session you will get notification via email

To book: www.patt.org.uk/adhdsupport or scan the QR Code below.

Facebook: PATT ADHD Support

First Wednesday of each month 6.30pm to 8.30pm

7th February 2024	Stanford Le-Hope Family Hub
6th March	PATT Office
1st May	Stanford Le-Hope Family Hub
5th June	PATT Office
3rd July	Stanford Le-Hope Family Hub
4th September	PATT Office
2nd October	Stanford Le-Hope Family Hub
6th November	PATT Office
4th December	PATT Office

3rd Friday of each month 9.30am–11.30am

PATT Office, 51 Lodge Lane, Grays, RM17 5RZ

19th January 2024	16th February
15th March	19th April
17th May	21st June
19th July	27th September
25th October	29th November



PATT ADHD Support





Diary Dates

11th-13th September 2024	Year 6 residential
Friday 20th September 2024 PFA Fete sept	PFA Fete
Thursday 17th October 2024	Individual/Sibling Photos
Monday 21st October – Friday 1st November 2024	Half Term
Week Beginning Monday 18th November 2024	Mon/Tue: EYFS/KS1 Parent Consultations Weds/Th: KS2 Parent Consultations
Wednesday 4th December 2024	Pantomime (09:30 – all years)
Wednesday 20th December 2024	Last day of Autumn Term
Monday 6 th January 2025	Inset Day
Tuesday 7th January 2025	First day of Spring Term

Do you need support?

East Tilbury Primary Schools Online Pastoral Support.

We are very excited to launch our new Pastoral service to our school community. From today you can access support by completing a simple and quick online form.

We have been working hard over the last few months to set up extra support for our families which is very much needed at this challenging time. If you require support, then please do not hesitate to reach out. We are hoping this service will be a fantastic addition to the support we can provide for our school community. Please reach out if you need anything, we are always here to offer you support.

To make the process simple we have created a QR Code (at the top of the poster) which you can just scan, and this will take you directly to the form.

WE CAN HELP WITH

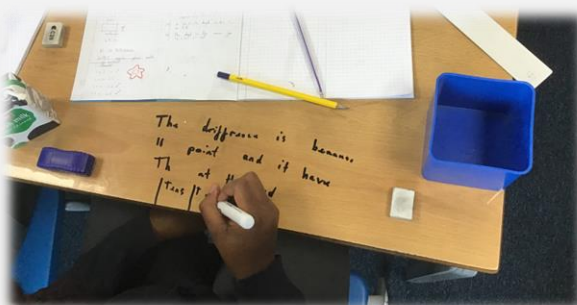
- Food
- School Uniform
- Hygiene Products
- Wellbeing

FOR MORE INFORMATION VISIT:

www.easttilburyprimary.thurrock.sch.uk



Classroom Photos



Outdoor Spaces



Keep in Touch



Our school office is open to receive calls between 8:30am and 3pm.

Tel: 01375 846181

Email: office.etp@osborne.coop

East Tilbury Primary School

Princess Margaret Road
East Tilbury, Essex, RM18 8SB



We are also regularly updating our Facebook page and Twitter feed. Log on and have a look!



Twitter:
[@EastTPrimary](https://twitter.com/EastTPrimary)



At East Tilbury Primary School our Designated Safeguarding Leads (DSL) are:

- Mrs Dawson

Due to the size of the school, we have the following designated staff who can deputise in the Headteacher's absence:

- Mr Gowland
- Mrs Jarvis
- Mrs Mylam
- Mrs Allen
- Mrs Sheridan

Pupils can contact any of our Safeguarding Team during the school day.

Worried about a child? You can phone or write to MASH about your concerns. Phone immediately if you believe it is urgent.

Thurrock MASH (Multi Agency Safeguarding hub), Civic Offices, New Road, Grays, Essex, RM17 6SL, Tel: 01375 652802. Emergency Duty Team (for out of hours) 01375 372468. · Police Child Abuse Investigation Team 01277 266822 or call 999 if you are concerned a child needs immediate protection. · Childline 0800 11 11 www.childline.org.uk · NSPCC 0808 800 5000 www.nspcc.org.uk; www.facebook.com/nspcc



Tues 14:00-16:00: St. Mary's Church hall, St. Mary's Church, Dock Rd, Grays, RM17 6EX.

Tues 11:00-13:00: St. John the Baptist Church, Tilbury, Dock Road, Tilbury, RM18 7PP

Weds 11:00-13:00: Gateway People's Centre, High Street, Stanford Le Hope, Essex, SS17 0EY

Weds 13:00 -14:30: Sockets Heath Baptist Church, Premier Avenue, Grays, RM16 2SB

Thurs 11:00-13:00: St. Francis Centre, Somerset Rd, Linford, SS17 0QA

Thurs 11:00-13:00: All Saints Church of England, Foyle Drive, Sth Ockendon, RM15 5HF

Fri 10:12:00: St. Stephen's Church of England, London Rd, Purfleet, RM19 1QD

Sat 09:30-11:30: Emmanuel Church of England, Sleepers Farm Rd, Chadwell St. Mary, RM16 4TP

Sat 10:00-12:00: All Saints Church of England, Foyle Drive, Sth Ockendon, RM15 5HF

Sat 10:00-12:00: Christian Gates of Praise International Christian Centre, 79-83 London Rd, RM175YF

September 2024							October 2024							November 2024							December 2024						
M	T	W	T	F	S	S	M	T	W	T	F	S	S	M	T	W	T	F	S	S	M	T	W	T	F	S	S
						1		1	2	3	4	5	6					1	2	3							1
2	3	4	5	6	7	8	7	8	9	10	11	12	13	4	5	6	7	8	9	10	2	3	4	5	6	7	8
9	10	11	12	13	14	15	14	15	16	17	18	19	20	11	12	13	14	15	16	17	9	10	11	12	13	14	15
16	17	18	19	20	21	22	21	22	23	24	25	26	27	18	19	20	21	22	23	24	16	17	18	19	20	21	22
23	24	25	26	27	28	29	28	29	30	31				25	26	27	28	29	30		23	24	25	26	27	28	29
30																					30	31					
January 2025							February 2025							March 2025							April 2025						
M	T	W	T	F	S	S	M	T	W	T	F	S	S	M	T	W	T	F	S	S	M	T	W	T	F	S	S
		1	2	3	4	5						1	2						1	2		1	2	3	4	5	6
6	7	8	9	10	11	12	3	4	5	6	7	8	9	3	4	5	6	7	8	9	7	8	9	10	11	12	13
13	14	15	16	17	18	19	10	11	12	13	14	15	16	10	11	12	13	14	15	16	14	15	16	17	18	19	20
20	21	22	23	24	25	26	17	18	19	20	21	22	23	17	18	19	20	21	22	23	21	22	23	24	25	26	27
27	28	29	30	31			24	25	26	27	28			24	25	26	27	28	29	30	28	29	30				
														31													
May 2025							June 2025							July 2025							August 2025						
M	T	W	T	F	S	S	M	T	W	T	F	S	S	M	T	W	T	F	S	S	M	T	W	T	F	S	S
			1	2	3	4						1			1	2	3	4	5	6					1	2	3
5	6	7	8	9	10	11	2	3	4	5	6	7	8	7	8	9	10	11	12	13	4	5	6	7	8	9	10
12	13	14	15	16	17	18	9	10	11	12	13	14	15	14	15	16	17	18	19	20	11	12	13	14	15	16	17
19	20	21	22	23	24	25	16	17	18	19	20	21	22	21	22	23	24	25	26	27	18	19	20	21	22	23	24
26	27	28	29	30	31		23	24	25	26	27	28	29	28	29	30	31				25	26	27	28	29	30	31
							30																				

	School Holiday
	Additional autumn half term (some Thurrock schools only)
	Inset days, schools closed to students
	Trust conference, schools closed to students
	Bank Holidays