

School News

A MESSAGE FROM THE SENIOR LEADERSHIP TEAM

Dear Parents and Carers,

Christmas PFA Market last Friday

Last Friday the school was transformed into a Christmas wonderland by our amazing PFA, parent helpers and staff volunteers. From Christmas stalls, inflatables and Santa's grotto - it truly was an amazing event. As school leaders we are blown away by their efforts and grateful to the parents and children who attended the event and enjoyed the festive fun! We look forward to future events run by the amazing PFA in the year ahead.



Panto

On Wednesday we welcomed Chaplins' Panto company to the school to perform a wonderful Christmas Panto. The children loved the story, dancing, singing and jokes! It was such fun to all come together as a school and enjoy this Christmas treat.



We wish you a relaxing weekend ahead
School Leadership Team

Important Information

Absence

If your child is too ill to attend school, this must be reported to us by no later than **9.00am**.

Please telephone the school, press one and leave a message on the voicemail box stating your child's full name, class, the reason for absence and when we can expect them to return to school (if known).

Home Visits will be carried out for any child that is absent for 3 or more school days without reason.

If your child has an injury and has been given medical advice that we need to follow as a school, please bring them to the school office for 8.15am on their first day back at school following the injury so that we can complete a risk assessment.

Thank you for your cooperation

We need you...



Please label all children's school uniform. This helps us return lost property to the correct child and prevents parents from having to replace missing uniform as often. This is particularly important as the weather is colder and children are wearing jumpers/cardigans to school.



Our Year 1 classes are getting creative and are in need of junk modelling materials. If you have any of the following items at home, we'd love to have them:

- Toilet roll tubes
- Cereal boxes
- Egg boxes
- Any other clean, recyclable craft materials

Please hand them in to the Year 1 teachers or drop them off at the school office.

Thank you for your support!

Please ensure your child has a PE kit in school each day. If you are struggling with this, please contact Mrs Jarvis or Mrs Allen.

Thank You

 **Mud Kitchen Donations Needed!** 🍰

We're on the lookout for any **old pots, pans, baking trays, and plastic or wooden utensils** to help stock our mud kitchen! If you have any kitchen items you no longer need, we'd love to give them a second life in our outdoor play area.



SEND in Focus



09:30-10:30am

Have you received an Autism diagnosis for your child?

Do you have questions or concerns?
Do you need someone to talk to?

The Specialist Health Visiting Team Nursery Nurse and colleagues will be available on the third Monday of the month at the Child Development Centre, Gifford House, Thurrock Community Hospital, Long Lane, Grays, RM16 2PX

09:30-10:30am



Specialist Health Visiting Team Advice Line

**Tuesdays
and
Thursdays**

**Between
09:30am
11:30am**

**0300 300
1816**

Who Can Call?

Parents, Carers and Professionals for Children with additional needs that require specialist health advice and support, who are currently/previously known to the Community Paediatricians.



For more information on the Specialist Health Visiting Team, please scan the QR code.

NELFT

NHS



THURROCK SEND AND AP LOCAL AREA PARTNERSHIP SEND INSPECTION - SURVEY

Thurrock SEND and AP Local Area Partnership have been informed that His Majesty's Chief Inspector of Education, Children's Services and Skills (HMCI) and the Care Quality Commission (CQC) will be inspected under section 20 of the Children Act 2004 from 8 December to 12 December 2025.

The inspectors want to hear from as many children and young people with SEND, their families, and practitioners as possible.

Please find QR Code link to the survey. The survey is open now and will close at 9am on 2 December 2025.



Should anyone have any access difficulties, please print, complete and send back to Ofstedinspection@thurrock.gov.uk

Diary Dates

Tuesday 9th and Wednesday 10th December 2025	R/1/2 Christmas performance week
Thursday 11th December 2025 2.30pm	Rocksteady children performance
Thursday 11th December 2025	Christmas Jumper Day
15thw/b December 2025	No teacher run clubs this week
Monday 15 th December 2025	Year 5 Imperial War Museum Visit
Wednesday 17 th December 2025	Christmas Dinner Day – Christmas Dress-Up Day
Monday 22nd December 2025 – Friday 2nd January 2026	Christmas Holidays
Monday 5th January 2026 – INSET day	INSET day
w/b 5th January 2026	No teacher run clubs this week
w/b 12th January 2026	Teacher run clubs start back.
Tuesday 13th January 2026	Year 4 start swimming
W/b Monday 16th February 2026	Half Term
Monday 23rd February 2026	Trust Day
Tuesday 24th February 2026	Young Voices @ 02
w/b Monday 9th March 2026	Parent consultation week R,1,2 Mon /Tues KS2 Wed/Thurs
Monday 30th March 2026 – Friday 10th April 2026	Easter Holidays
Monday 4th May 2026	Bank Holiday
w/b Monday 25th May 2026	Half Term
Tuesday 2nd June 2026	Year 6 swimming
Wednesday 8th July 2026	Open Evening
Monday 20th and Tuesday 21st July 2026	INSET days

Christmas Diary Dates

Christmas events at ETP



- ❖ 28/11 – PFA Christmas Fayre -3.30-7pm- plenty of Christmas family fun! – see PFA letter for details
- ❖ 3/12 - Christmas pantomime - performance to the children during schooltime
- ❖ 3-12/12 – Christmas cards in school (please put name and class on the envelop)
- ❖ 9/12 - Lower school (Reception &KS1) Christmas performances 9.30am and 1.30pm (ticket event)
- ❖ 10/12 – Lower school (Reception &KS1) Christmas performances 9.30am and 1.30pm (ticket event)
- ❖ 11/12 – National Christmas jumper day - children can wear a Christmas jumper to school (normal uniform with a Christmas jumper) - voluntary contribution of £1 towards 'Save the children' charity.
- ❖ 15/12 – Christmas assembly hosted by Revd. Michelle in school
- ❖ 17/12 – Christmas dinner day for the children in school – Christmas themed non-uniform day
- ❖ 19/12 – last day of term (children return to school Tuesday 6/1/26)

Do you need support?

East Tilbury Primary Schools Online Pastoral Support.

We are very excited to launch our new Pastoral service to our school community. From today you can access support by completing a simple and quick online form.

We have been working hard over the last few months to set up extra support for our families which is very much needed at this challenging time. If you require support, then please do not hesitate to reach out. We are hoping this service will be a fantastic addition to the support we can provide for our school community. Please reach out if you need anything, we are always here to offer you support.

To make the process simple we have created a QR Code (at the top of the poster) which you can just scan, and this will take you directly to the form.

WE CAN HELP WITH

- Food
- School Uniform
- Hygiene Products
- Wellbeing

FOR MORE INFORMATION VISIT:

www.easttilburyprimary.thurrock.sch.uk



READERS OF THE WEEK

2RS
&
6LC

Congratulations

Each week, teachers keep track of how many pupils have read at home **at least five times**. The class with the highest number of regular readers is celebrated during our **Friday Celebration Assembly**. Let's keep up the great reading habits!

Class News

Reception

In reception this week we have been having lots of Christmas fun!

We watched the pantomime which was very funny and we have made some decorations to take home for our Christmas tree.

We have been reading Christmas stories and singing Christmas songs. We are very excited to be opening our advent calendars and our elves at home seem to have been a little bit tricky this week.

In Maths, we have been learning about adding and subtracting numbers up to 6. We have been using bricks and counters to help us with this.

We have been learning the sounds 'f' and 'l' in phonics.



Year One

What a magical week we've had in Year 1! We enjoyed watching the Christmas pantomime, which filled us with laughter and festive cheer. The children have also been busy rehearsing for our Nativity performance — they're doing brilliantly and we can't wait for you to see it!

In phonics, everyone has been working incredibly hard and showing great progress. In maths, we made months of the year paper chains to help us learn the order of the months — the children loved creating them!

We also wrote some beautiful letters to Father Christmas, full of wonderful ideas and wishes.

Well done, Year 1 — we are so proud of you!



Class News

Year Two

What an exciting week it has been for Year 2! We got to see the magical pantomime *Dick Whittington*. Meanwhile, the excitement continued as the children have been busy rehearsing for their very own Christmas Nativity. They have been working hard to learn their lines and songs, and we can't wait to share their performance with you next week! In Maths, Year 2 explored arrays to represent multiplication and division. They enjoyed creating patterns and discovering how arrays help us understand these operations in a visual way. In English, the children let their imaginations run wild by writing poems titled "*If I Were in Charge at Home*." Their ideas were creative, funny, and sometimes very ambitious! It's been a week full of learning, creativity, and festive fun. We're looking forward to another brilliant week as we count down to Christmas.

Year Three - Computing

This week, year 3 were using a free app called Piskel to design an avatar based on a Christmas icon such as Santa, elves, reindeer and snowmen. We then duplicated the slide and changed something or moved part of the picture ever so slightly. Repeating this process over multiple slides meant that when the slides were 'played' it looked like the character was moving. We had jumping snowmen, snow falling on the trees and even a swinging Santa hat!



Class News

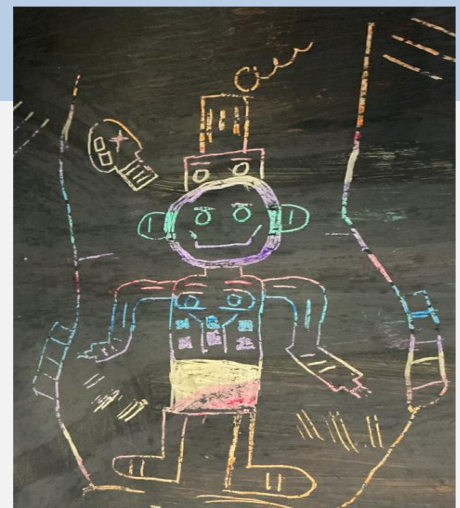
Year Four

This week in Maths, the children have been exploring pictograms and bar charts. They have practised reading information carefully from these charts to answer a range of questions, developing their skills in interpreting data. To consolidate their learning, the class created their very own bar charts, which allowed them to see how information can be represented visually and clearly. It was wonderful to see their enthusiasm as they worked together to design and present their charts.

In English, we have continued our focus on writing sentences about Queen Sychorax. The children have been learning how to use parenthesis to add extra detail and how expanded noun phrases can make their writing more descriptive and engaging. Their creativity has really shone through, and they are becoming increasingly confident in applying these techniques to their work.

This week in Science, we have been exploring the importance of oral hygiene. The children set up an experiment to investigate how sugary drinks can affect our teeth, using eggshells as a model for tooth enamel. In Computing, we used the Chromebooks and headphones to record our voices as the first step in creating our own podcasts. The children enjoyed experimenting with sound and are excited to edit and share their recordings in the coming weeks.

As a whole school, we had the fantastic opportunity to watch a pantomime performance. The children thoroughly enjoyed the show, joining in with the laughter and excitement. It was a memorable experience that brought the school community together and added a festive touch to our week.



Class News

Year Five

This week, we had great fun on Wednesday morning, watching a production of the pantomime 'Dick Whittington', which was great fun. This week we have also been practising our Y5 Christmas song and have introduced our Spring Production: 'Rock Bottom'. In the next 2 weeks Y5 pupils who are interested will be auditioning for parts in the production.



Year Six

Geography: Exploring Energy Types

In Geography, the year group investigated different types of energy. From renewable sources like solar and wind to non-renewable ones such as coal and oil, Year 6 discussed how energy impacts our planet and our future. Their curiosity sparked thoughtful conversations about sustainability and innovation.

🎨 Creative Craft: Waistcoats

Year 6 also showcased their creativity by designing and making waistcoats. With fabric, thread, and plenty of patience, they learned practical skills while expressing their individuality. The finished waistcoats were a fantastic display of craftsmanship and style.

🔦 Science: Light Painting

Science lessons took a creative twist with light painting! Using torches and long-exposure photography, the children experimented with how light moves and creates patterns. The results were dazzling, and the activity combined scientific inquiry with artistic expression.

🌟 What a busy and inspiring week for Year 6! Their learning has been full of creativity, exploration, and imagination.



Reach for the Stars



Our 'Stars of the Week' are the children that have gone over and above in their efforts. We are very proud of them for their achievements and thought they deserved an extra-special mention!

RJG	Arianna	For making good choices during continuous provision
RMB	Kenzie	For making an amazing effort to read at home.
RES	Skye	For her lovely reading and always reading at home.
1SL	Arthur	For his increased independence during tasks.
1CD	Amayah	For her wonderful writing and observational drawing
1EC	Jack	For always being a kind and supportive friend
2BG	Teniola	For her creative piece of artwork.
2NB	Ayaan	For his brilliant poem, based on the idea 'If I were in charge at home'.
2RS	Kajus	For using his sounds when writing independently.
3TG	Lyla	For her hand work in Maths and English this week.
3MR	Flint M	For creating an imaginative, festive animation in computing.
4ML	Max	For his creative piece of artwork.
4CP	Vinnie W	For improved behaviour at attitude to learning.
4BA	Grace T	For amazing improvement in reading.
4KC	Misha P	For building up her confidence in lessons to share her work and ask questions.
5SG	Nikola B	For always being a positive role model and always striving to do her best in every lesson.
5SA	Frankie Ph	For working well in Maths and building his confidence
5LC	Isla-Rose F	For being a positive role model and always being kind, helpful and thoughtful
6AB	Alice S	For displaying the school core values in all lessons.
6NM	Jaiden C	For being resilient, developing his confidence when sharing his ideas with the whole class
6TH	Layton	For being a role model in class



Maths Marvels



All pupils at East Tilbury Primary have logins for Times Tables Rockstars and are able to log on at home to practice their times tables.

Congratulations to all the winning classes!

1st December - 5 December 2025



5SA

1457

5LC

647

5SG

325

1st December - 5 December 2025



2RS

135

2NB

35

2BG

4

1st December - 5 December 2025



1SL

8

1CD

4

1EC

3

1st December - 5 December 2025



3MR

101

3CS

38

3TG

1

1st December - 5 December 2025



4BA

411

4ML

252

4KC

114

4CP

16

1st December - 5 December 2025



6NM

1188

6AB

341

6TH

23



Thurrock
Teacher Training

Get into Teaching

St Clare's School

Lead ITT provider in partnership with Tes institute are pleased to announce that trainee places are available for the academic year 2025/2026.

*'Our trainees success rate
Securing QTS = 100%
Employed = 100%'*



Our partner schools for
2025/2026 include:

Primary

Chadwell St. Mary, Deneholm, East Tilbury, Thameside, Stifford Clays, Horndon-on-the-hill, Stanford-le-Hope, Doddinghurst, Little Thurrock, Arthur Bugler, Warren Primary, Bonnygate Primary, Woodside Academy

Secondary

Grays Convent, Marshalls Park, Ormiston Park Academy, St. Clare's School, William Edwards The Gateway Academy, Brentwood County High, Hathaway Academy, Orsett Heath Academy

"The Tes Institute course was brilliant, and I would recommend it to others who are thinking of entering a career in teaching"
- 2024 Trainee

For all enquiries please contact:
thurrockteachertraining@osborne.coop

Keep in Touch



Our school office is open to receive calls between 8:30am and 3pm.

Tel: 01375 846181

Email: office.etp@osborne.coop

East Tilbury Primary School

Princess Margaret Road
East Tilbury, Essex, RM18 8SB



We are also regularly updating our Facebook page and Twitter feed. Log on and have a look!



Twitter:
[@EastTPrimary](https://twitter.com/EastTPrimary)



At East Tilbury Primary School our Designated Safeguarding Leads (DSL) are:

- Mrs Dawson

Due to the size of the school, we have the following designated staff who can deputise in the Headteacher's absence:

- Mr Gowland
- Mrs Jarvis
- Mrs Mylam
- Mrs Allen
- Mrs Sheridan

Pupils can contact any of our Safeguarding Team during the school day.

Worried about a child? You can phone or write to MASH about your concerns. Phone immediately if you believe it is urgent.

Thurrock MASH (Multi Agency Safeguarding hub), Civic Offices, New Road, Grays, Essex, RM17 6SL, Tel: 01375 652802. Emergency Duty Team (for out of hours) 01375 372468. · Police Child Abuse Investigation Team 01277 266822 or call 999 if you are concerned a child needs immediate protection. · Childline 0800 11 11 www.childline.org.uk · NSPCC 0808 800 5000 www.nspcc.org.uk; www.facebook.com/nspcc



Tues 14:00-16:00: St. Mary's Church hall, St. Mary's Church, Dock Rd, Grays, RM17 6EX.

Tues 11:00-13:00: St. John the Baptist Church, Tilbury, Dock Road, Tilbury, RM18 7PP

Weds 11:00-13:00: Gateway People's Centre, High Street, Stanford Le Hope, Essex, SS17 0EY

Weds 13:00 -14:30: Sockets Heath Baptist Church, Premier Avenue, Grays, RM16 2SB

Thurs 11:00-13:00: St. Francis Centre, Somerset Rd, Linford, SS17 0QA

Thurs 11:00-13:00: All Saints Church of England, Foyle Drive, Sth Ockendon, RM15 5HF

Fri 10:12:00: St. Stephen's Church of England, London Rd, Purfleet, RM19 1QD


Sat 09:30-11:30: Emmanuel Church of England, Sleepers Farm Rd, Chadwell St. Mary, RM16 4TP

Sat 10:00-12:00: All Saints Church of England, Foyle Drive, Sth Ockendon, RM15 5HF

Sat 10:00-12:00: Christian Gates of Praise International Christian Centre, 79-83 London Rd, RM175YF


Osborne Term Dates for 2025-26 (Approved by Trust Board 24/09/24)


September 2025							October 2025							November 2025							December 2025						
M	T	W	T	F	S	S	M	T	W	T	F	S	S	M	T	W	T	F	S	S	M	T	W	T	F	S	S
1	2	3	4	5	6	7			1	2	3	4	5						1	2	1	2	3	4	5	6	7
8	9	10	11	12	13	14	6	7	8	9	10	11	12	3	4	5	6	7	8	9	8	9	10	11	12	13	14
15	16	17	18	19	20	21	13	14	15	16	17	18	19	10	11	12	13	14	15	16	15	16	17	18	19	20	21
22	23	24	25	26	27	28	20	21	22	23	24	25	26	17	18	19	20	21	22	23	22	23	24	25	26	27	28
29	30						27	28	29	30	31			24	25	26	27	28	29	30	29	30	31				
January 2026							February 2026							March 2026							April 2026						
M	T	W	T	F	S	S	M	T	W	T	F	S	S	M	T	W	T	F	S	S	M	T	W	T	F	S	S
			1	2	3	4						1								1			1	2	3	4	5
5	6	7	8	9	10	11	2	3	4	5	6	7	8	2	3	4	5	6	7	8	6	7	8	9	10	11	12
12	13	14	15	16	17	18	9	10	11	12	13	14	15	9	10	11	12	13	14	15	13	14	15	16	17	18	19
19	20	21	22	23	24	25	16	17	18	19	20	21	22	16	17	18	19	20	21	22	20	21	22	23	24	25	26
26	27	28	29	30	31		23	24	25	26	27	28		23	24	25	26	27	28	29	27	28	29	30			
														30	31												
May 2026							June 2026							July 2026							August 2026						
M	T	W	T	F	S	S	M	T	W	T	F	S	S	M	T	W	T	F	S	S	M	T	W	T	F	S	S
				1	2	3	1	2	3	4	5	6	7			1	2	3	4	5						1	2
4	5	6	7	8	9	10	8	9	10	11	12	13	14	6	7	8	9	10	11	12	3	4	5	6	7	8	9
11	12	13	14	15	16	17	15	16	17	18	19	20	21	13	14	15	16	17	18	19	10	11	12	13	14	15	16
18	19	20	21	22	23	24	22	23	24	25	26	27	28	20	21	22	23	24	25	26	17	18	19	20	21	22	23
25	26	27	28	29	30	31	29	30						27	28	29	30	31			24	25	26	27	28	29	30
																					31						

 = School Days

 = School Holidays

 = Bank Holidays

 = Weekends

 = additional autumn half term

 = Trust training day